

D & D PRODUCTION INC.®

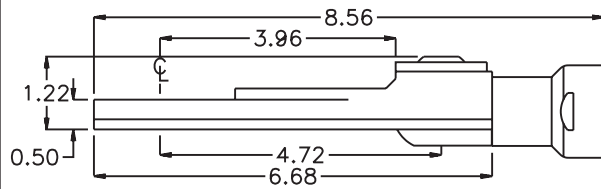
ASSEMBLY NO. TNR88L HEAD NO. 215

TUBE NUT ASS'Y
Rev. A
03-05-07

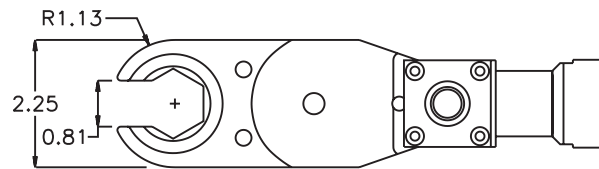
2500 WILLIAMS DRIVE • WATERFORD, MI • 48328

PHONE : (248) 334-2112 • FAX : (248) 334-0062

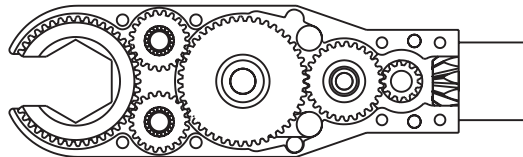
SIDE VIEW



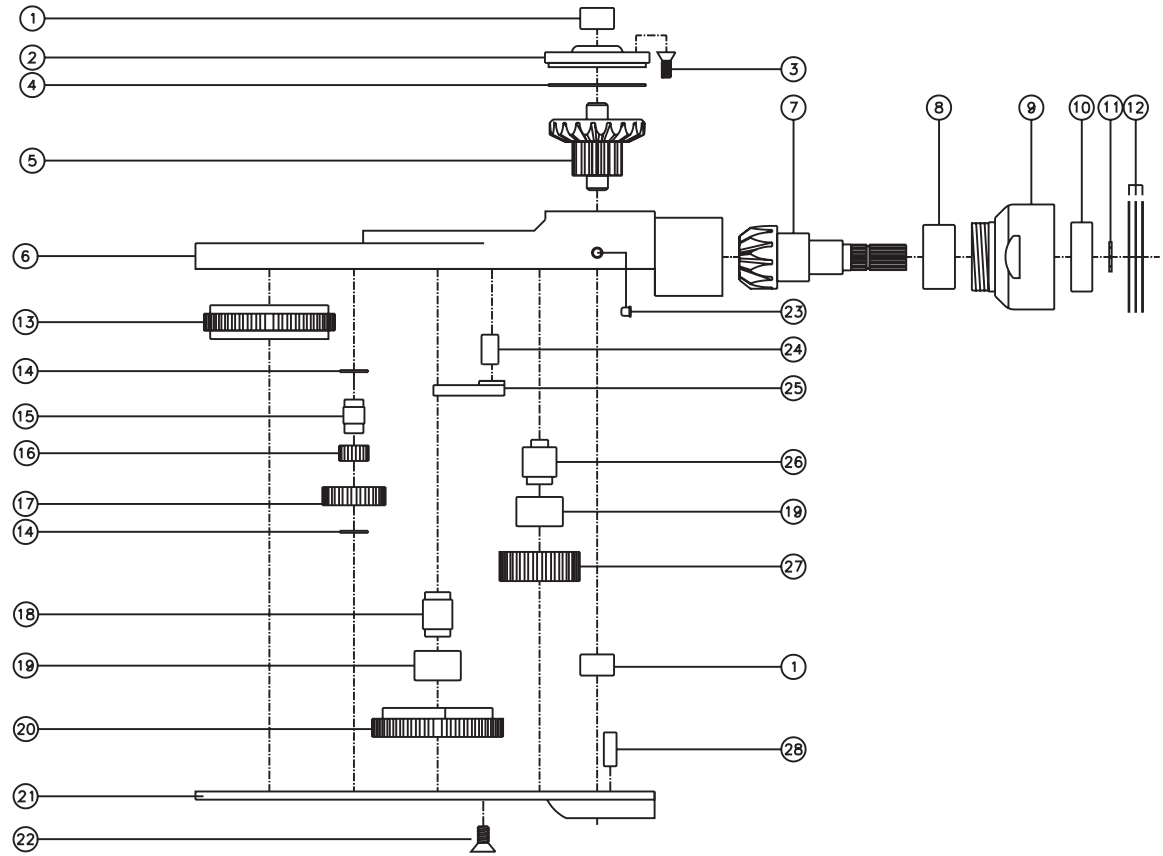
TOP VIEW



GEAR ASSEMBLY



PARTS BLOWOUT



ITEM	DESCRIPTION	PART NO.	ITEM	DESCRIPTION	PART NO.	ITEM	DESCRIPTION	PART NO.
1	Needle Bearing (2)	M-551	13	Socket Gear	244516-1-XX	25	Pawl	1405-RPS-P
2	Cap	BC-661G1	14	Thrust Race (4)	TRA-512M	26	Lg. Idler Pin	IP-8514B
3	Screw #1 (4)	S-806	15	Sm. Idler Pin (2)	IP-1016C	27	Lg. Idler Gear	242714
4	Thrust Race	TRA-1423	16	Bearing Needles (40)	LR15M58	28	Dowel Pin (2)	DP-1204
5	Bevel/Drive Gear Assembly	241340G3	17	Sm. Idler Gear (2)	242109			
6	Gear Housing	TNR88LH	18	Cam Pin	IP-8514			
7	Bevel Pinion Gear	661P-H16	19	Needle Bearing	B-87			
8	Needle Bearing	HK-1812	20	Cam Gear	244514-CR			
9	Motor Coupling	MC-H16	21	Bottom Cover	TNR88LP			
10	Ball Bearing	9100KDD	22	Screw #2 (8)	S-1004			
11	Snap Ring	51111	23	Grease Fitting	1877			
12	Orientation Shim Set	W-5244	24	Pawl Spring	RSS-0814			