



D & D PRODUCTION INC.

ASSEMBLY NO. TNR72BLA15

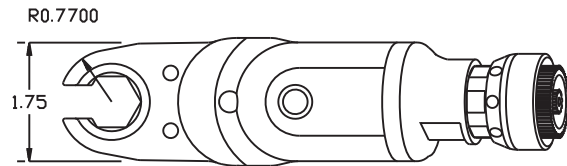
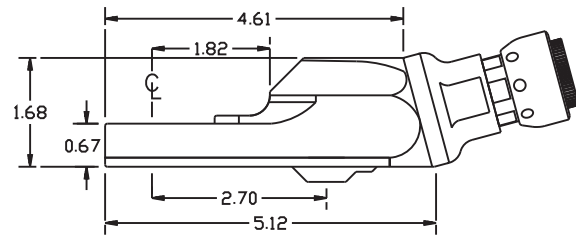
HEAD NO. 218R

TUBE NUT ASS'Y
Rev. A
12-29-06

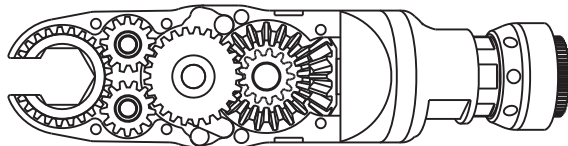
2500 WILLIAMS DRIVE • WATERFORD, MI • 48328

PHONE : (248) 334-2112 • FAX : (248) 334-0062

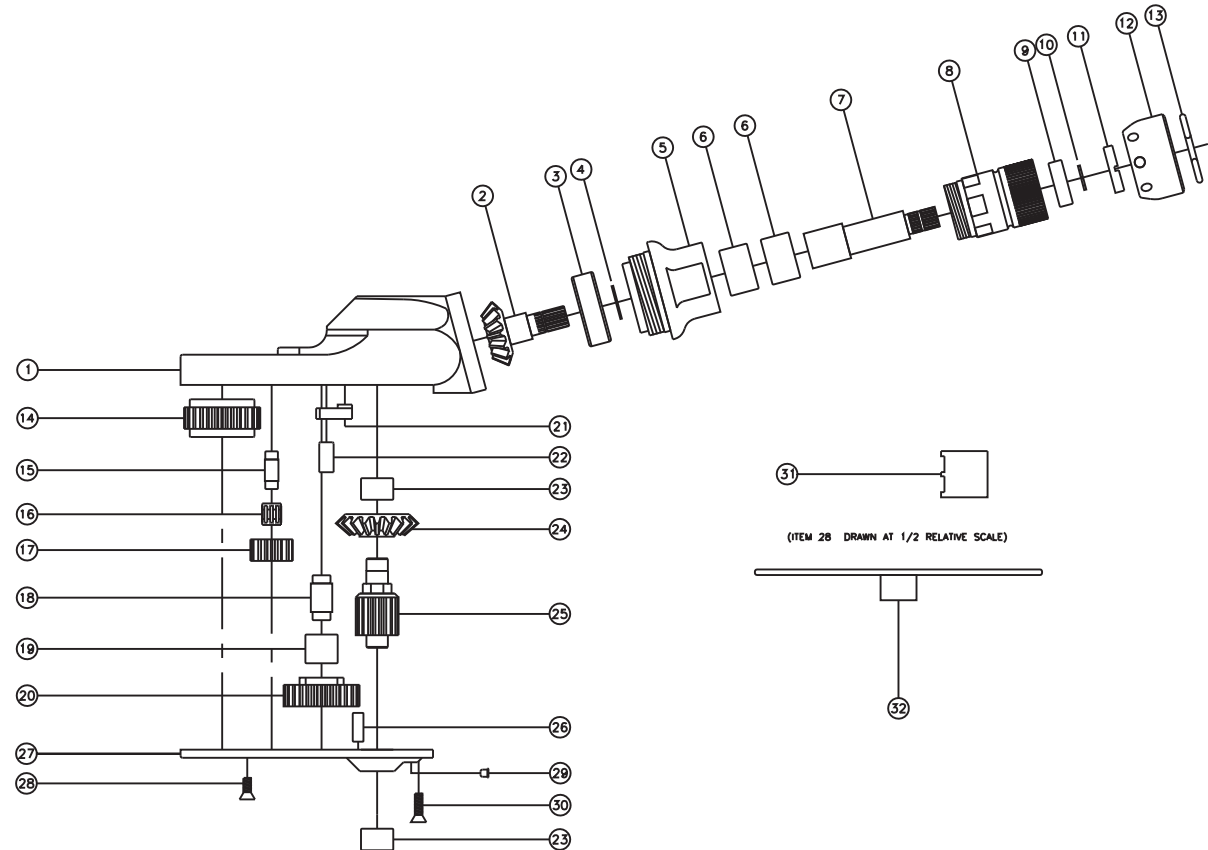
SIDE VIEW



GEAR ASSEMBLY



PARTS BLOWOUT



(ITEM 28 DRAWN AT 1/2 RELATIVE SCALE)

| ITEM | DESCRIPTION | PART NO. | ITEM | DESCRIPTION | PART NO. | ITEM | DESCRIPTION | PART NO. |
|------|---------------------|-------------|------|--------------------|--------------|------|----------------------------------|-------------|
| 1 | Gear Housing | TN72BLA15-H | 13 | Circlip | 1021-C | 25 | Drive Gear | 201325-DG |
| 2 | Bevel Pinion Gear | 151-P | 14 | Socket Gear | 202521i-1-XX | 26 | Dowel Pin (2) | DP-1208 |
| 3 | Ball Bearing | 201KD | 15 | Idler Pin (2) | IP-6M21i | 27 | Bottom Cover | TN72BLA15-P |
| 4 | Snap Ring | SH-37 | 16 | Needle Bearing (2) | K6910Mi | 28 | Screw #1 (2) | S-806 |
| 5 | Attachment Coupling | MC15-A | 17 | Idler Gear (2) | 201312i | 29 | Grease Fitting | 1877 |
| 6 | Needle Bearing (2) | B-108i | 18 | Cam Pin | CP-6825i | 30 | Screw #2 (4) | S-808 |
| 7 | Drive Shaft | DS-S2074 | 19 | Needle Bearing | B-68i | 31 | End Nut Socket (Optional) | ENT-ST61-10 |
| 8 | Motor Coupling | MC-ST61-10 | 20 | Cam Gear | 202516Bi-RC | 32 | Motor Coupling Wrench (Optional) | CW-10 |
| 9 | Ball Bearing | 699Zi | 21 | Pawl | 1004-PS-P | | | |
| 10 | Snap Ring | 51111 | 22 | Pawl Spring | RSS-0817 | | | |
| 11 | End Nut | EN-ST61-10 | 23 | Needle Bearing (2) | M-661 | | | |
| 12 | Motor Nut | N-0841B | 24 | Bevel Gear | 151-G | | | |