

D & D PRODUCTION INC.

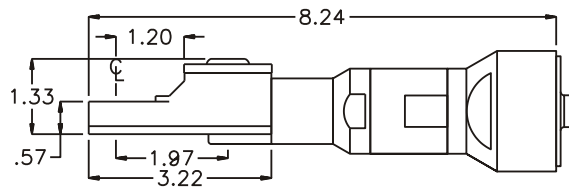
ASSEMBLY NO. TNBR66 HEAD NO. 188

TUBE NUT ASS'Y
Rev. A
04-11-02

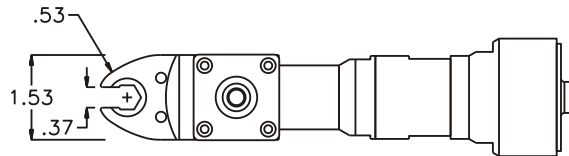
2500 WILLIAMS DRIVE • WATERFORD, MI • 48328

PHONE : (248) 334-2112 • FAX : (248) 334-0062

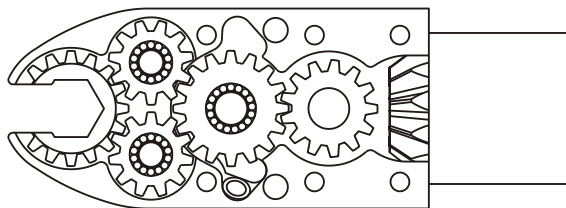
SIDE VIEW



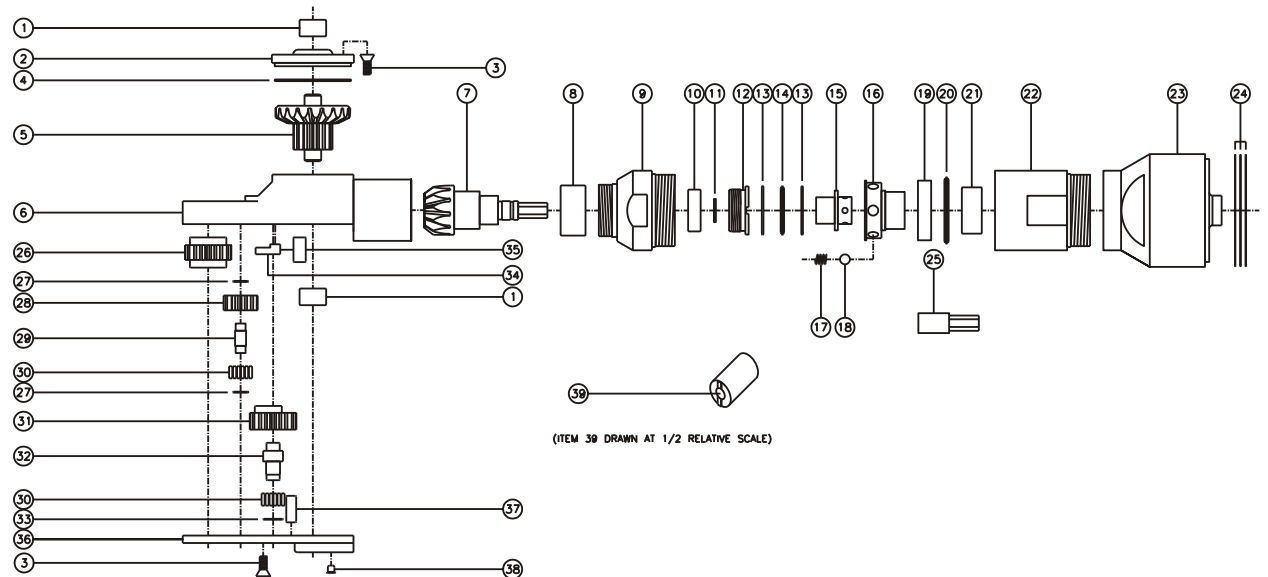
TOP VIEW



GEAR ASSEMBLY



PARTS BLOWOUT



ITEM	DESCRIPTION	PART NO.	ITEM	DESCRIPTION	PART NO.	ITEM	DESCRIPTION	PART NO.
1	Needle Bearing (2)	M-551	14	Thrust Bearing	NTA-815i	27	Thrust Race (4)	W-991-020i
2	Cap	BC-661G1	15	Drive Shaft	DSB-04H1622i	28	Idler Gear (2)	201109i
3	Screw (10)	S-806	16	Rotor	RA10B	29	Idler Pin (2)	IP-0718i
4	Thrust Race	TRA-1423i	17	Spring (6)	CS-0608	30	Bearing Needles (45)	LR15M58i
5	Bevel/Drive Gear Assembly	201340G1	18	Ball Bearing (6)	LB-10	31	Cam Gear	201614i-C
6	Gear Housing	TN66H	19	Retaining Ring	RR10	32	Cam Pin	IP-0821i
7	Bevel Pinion Gear	661P-M2	20	Thrust Bearing	NTA-1220	33	Thrust Race	W-1390-016i
8	Needle Bearing	HK-1812i	21	Needle Bearing	B-116	34	Pawl	0604D-RPS-P
9	Clutch Adapter	CTI10-2432	22	Upper Clutch Housing (Bottom)	CTA10-ETB6-A	35	Pawl Spring	RS-0815i
10	Ball Bearing	699Zi	23	Upper Clutch Housing (Top)	CTA10-ETB6-B	36	Bottom Cover	TN66P
11	Snap Ring	51111	24	Orientation Shim Set	W-6762-005-11	37	Dowel Pin (2)	DP-1208
12	End Nut	EN-0976	25	Drive Spindle	DB-04H06S	38	Grease Fitting	1877
13	Thrust Race (2)	TRA-815i	26	Socket Gear	201618i-1-XX	39	End Nut Socket (Optional)	ENT-10