



D & D PRODUCTION INC.®

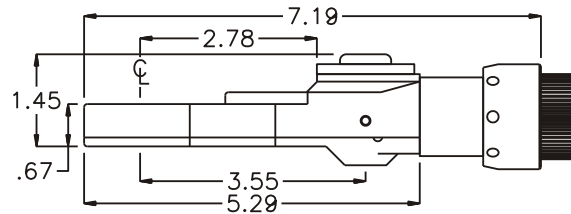
ASSEMBLY NO. TN94 HEAD NO. 221

TUBE NUT ASS'Y
Rev. A
04-15-03

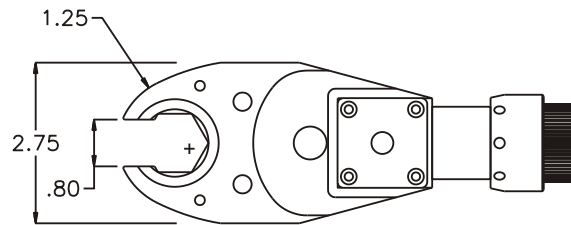
2500 WILLIAMS DRIVE • WATERFORD, MI • 48328

PHONE : (248) 334-2112 • FAX : (248) 334-0062

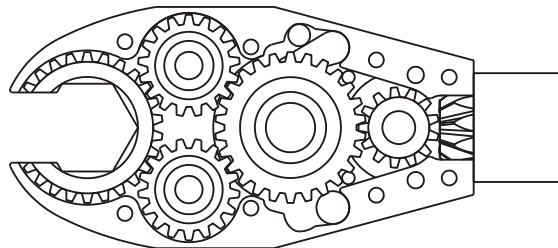
SIDE VIEW



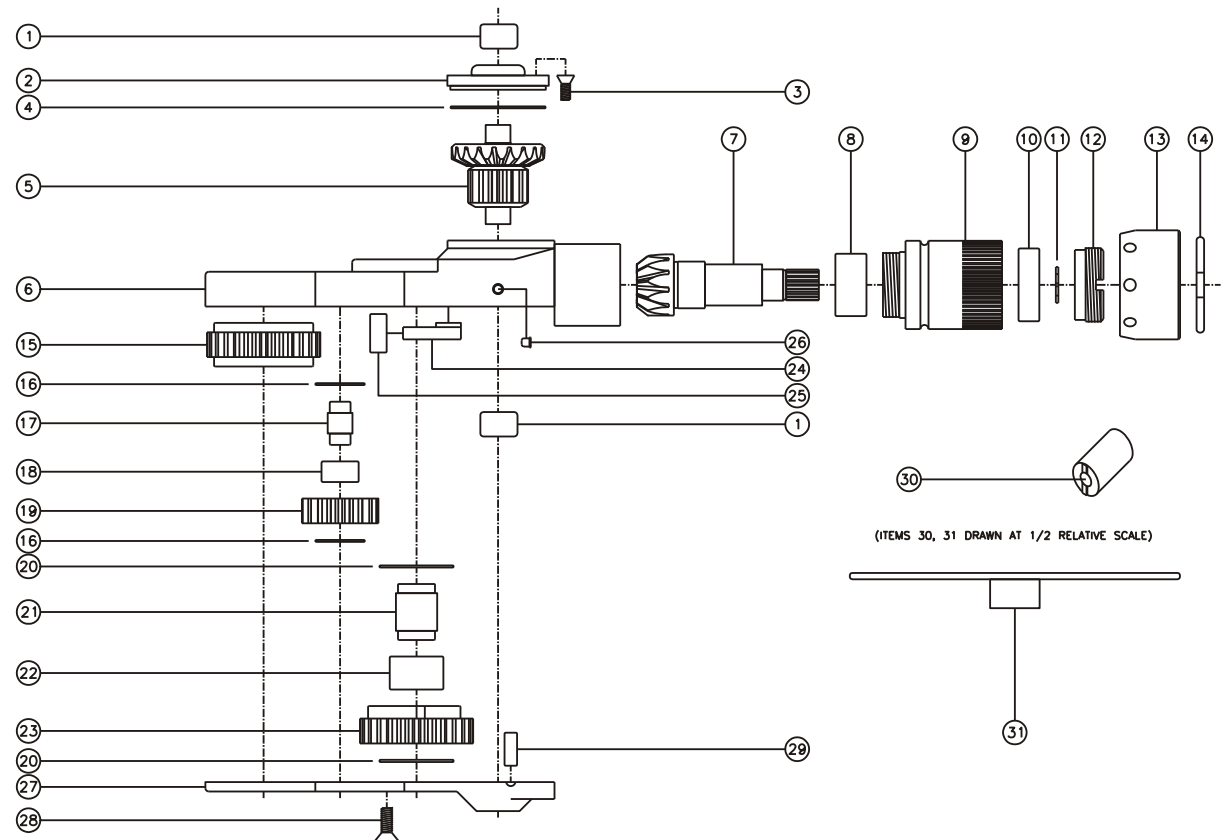
TOP VIEW



GEAR ASSEMBLY



PARTS BLOWOUT



ITEM	DESCRIPTION	PART NO.	ITEM	DESCRIPTION	PART NO.	ITEM	DESCRIPTION	PART NO.
1	Needle Bearing (2)	M-661	13	Motor Nut	N-13ST	25	Pawl Spring	RSS-0819i
2	Cap	BC-661G2	14	Circlip	0849-C	26	Grease Fitting	1877
3	Screw #1 (4)	S-806	15	Socket Gear	162621i-1-XX	27	Bottom Plate	TN94P
4	Thrust Race	TRA-1423i	16	Thrust Race (4)	TRA-512i	28	Screw #2 (8)	S-1008
5	Bevel/Drive Gear Assembly	161348G2	17	Idler Pin (2)	IP-6521i	29	Dowel Pin (2)	DP-1208
6	Gear Housing	TN94H	18	Needle Bearing (2)	B-65i	30	End Nut Socket (Optional)	ENT-ETV13
7	Bevel Pinion Gear	661P-ETV13	19	Idler Gear (2)	161712i	31	Motor Coupling Wrench (Optional)	CW-ETV13
8	Needle Bearing	HK-1812i	20	Thrust Race (2)	TRA-1018i			
9	Motor Coupling	MC-ETV13	21	Cam Pin	IP-10827i			
10	Ball Bearing	6001	22	Needle Bearing	B-108i			
11	Snap Ring	51114	23	Cam Gear	162618i-C			
12	End Nut	EN-0874	24	Pawl	1106i-PSP			