

D & D PRODUCTION INC.®

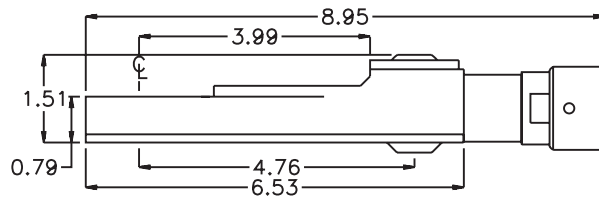
ASSEMBLY NO. TN88M2 HEAD NO. 216

TUBE NUT ASS'Y
Rev. A
03-05-07

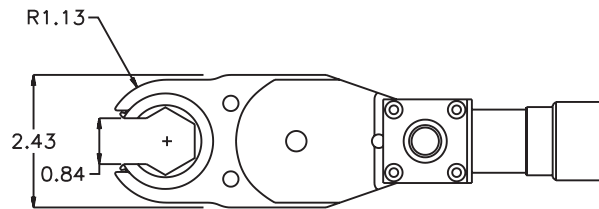
2500 WILLIAMS DRIVE • WATERFORD, MI • 48328

PHONE : (248) 334-2112 • FAX : (248) 334-0062

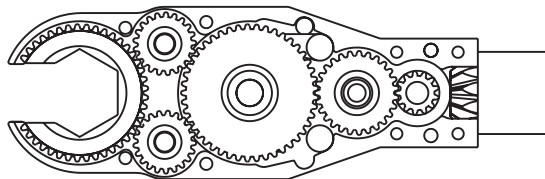
SIDE VIEW



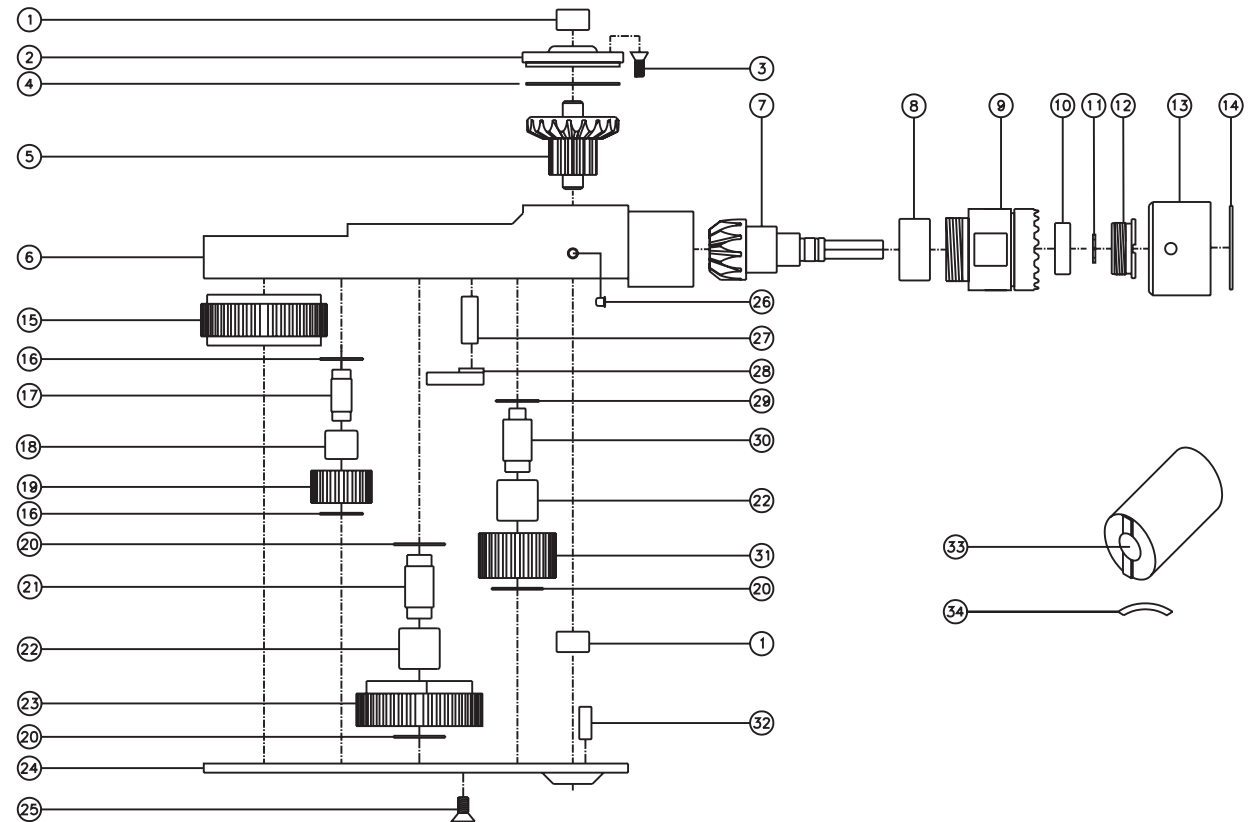
TOP VIEW



GEAR ASSEMBLY



PARTS BLOWOUT



ITEM	DESCRIPTION	PART NO.	ITEM	DESCRIPTION	PART NO.	ITEM	DESCRIPTION	PART NO.
1	Needle Bearing (2)	M-551	13	Motor Nut	N-AX3	25	Screw #2 (8)	S-1006
2	Cap	BC-661G1	14	Retaining Ring	RS-118	26	Grease Fitting	1877
3	Screw #1 (4)	S-806	15	Socket Gear	244525-1-XX	27	Pawl Spring	RSS-0823
4	Thrust Race	TRA-1423i	16	Thrust Race (4)	TRA-512M1	28	Pawl	1406-PS-P
5	Bevel/Drive Gear Assembly	241347G3	17	Sm. Idler Pin (2)	IP-5725B	29	Thrust Race	TRA-411
6	Gear Housing	TN88M2H	18	Needle Bearing (2)	B-57	30	Lg. Idler Pin	IP-71032B
7	Bevel Pinion Gear	661P-AX3	19	Sm. Idler Gear (2)	242116B	31	Lg. Idler Gear	242722
8	Needle Bearing	HK-1812i	20	Thrust Race (3)	TRA-613	32	Dowel Pin (2)	DP-1208
9	Motor Coupling	MC-AX3	21	Cam Pin	IP-71032	33	End Nut Socket (Optional)	ENT-10
10	Ball Bearing	699Zi	22	Needle Bearing (2)	B-710	34	Motor Air Restrictor (Optional)	IAR-474110
11	Snap Ring	51111	23	Cam Gear	244522-C			
12	End Nut	EN-0976	24	Bottom Cover	TN88M2P			