

D & D PRODUCTION INC.®

# ASSEMBLY NO. TN88

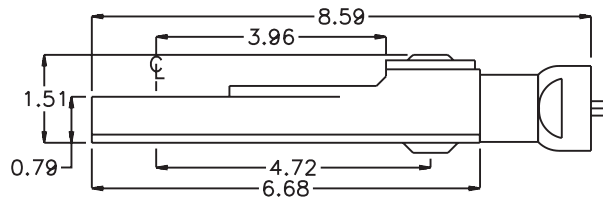
## HEAD NO. 217

TUBE NUT ASS'Y  
Rev. A  
03-05-07

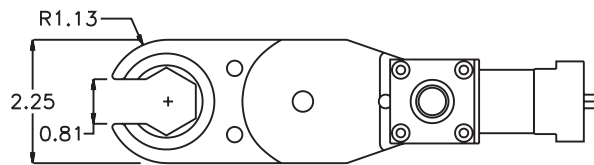
2500 WILLIAMS DRIVE • WATERFORD, MI • 48328

PHONE : (248) 334-2112 • FAX : (248) 334-0062

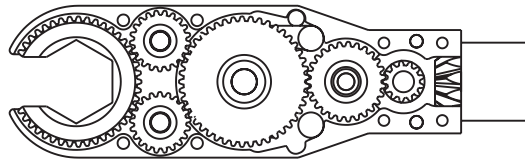
### SIDE VIEW



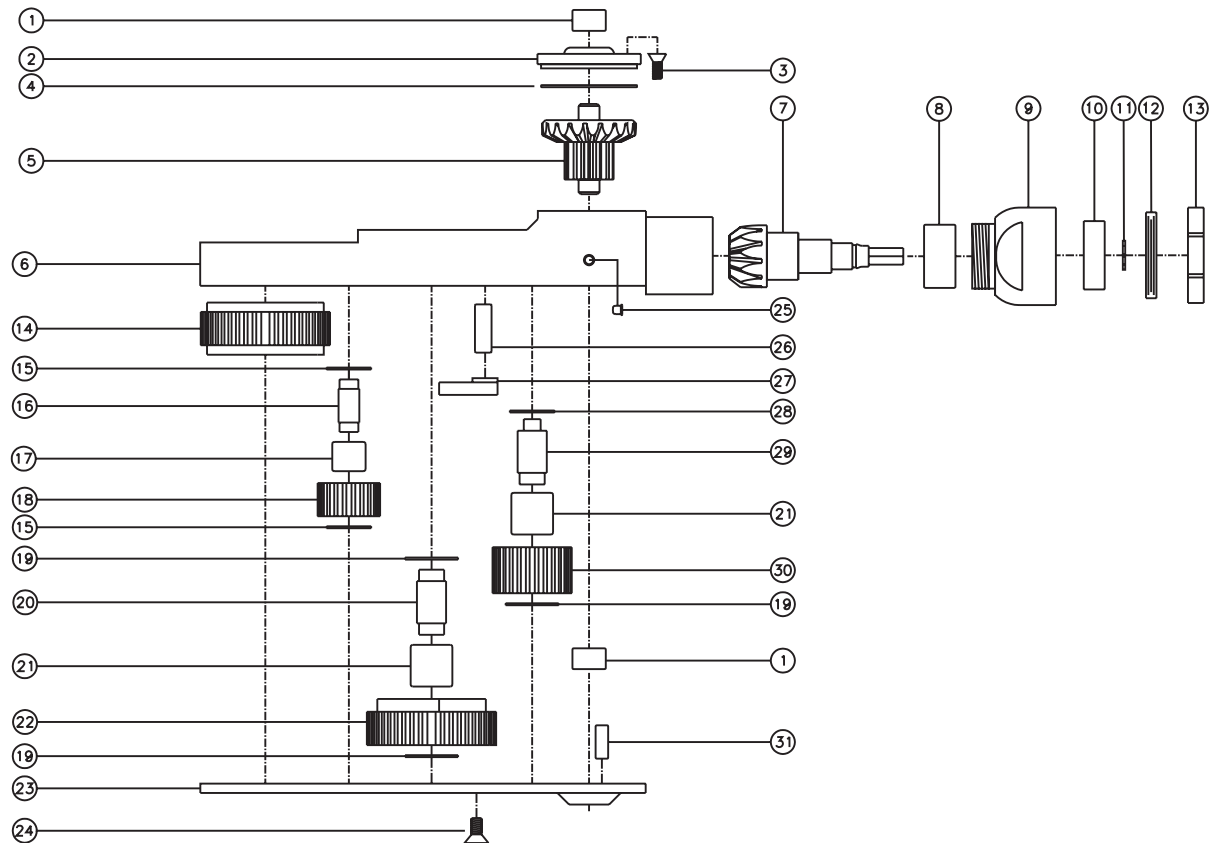
### TOP VIEW



### GEAR ASSEMBLY



### PARTS BLOWOUT



ITEM	DESCRIPTION	PART NO.	ITEM	DESCRIPTION	PART NO.	ITEM	DESCRIPTION	PART NO.
1	Needle Bearing (2)	M-551	13	Motor Nut	N-T60-30	25	Grease Fitting	1877
2	Cap	BC-661G1	14	Socket Gear	244525-1-XX	26	Pawl Spring	RSS-0823
3	Screw #1 (4)	S-806	15	Thrust Race (4)	TRA-512M1	27	Pawl	1406-PS-P
4	Thrust Race	TRA-1423i	16	Sm. Idler Pin (2)	IP-5725B	28	Thrust Race	TRA-411
5	Bevel/Drive Gear Assembly	241347G3	17	Needle Bearing (2)	B-57	29	Lg. Idler Pin	IP-71032B
6	Gear Housing	TN88H	18	Sm. Idler Gear (2)	242116B	30	Lg. Idler Gear	242722
7	Bevel Pinion Gear	661P-T6030	19	Thrust Race (3)	TRA-613	31	Dowel Pin (2)	DP-1208
8	Needle Bearing	HK-1812i	20	Cam Pin	IP-71032			
9	Motor Coupling	MC-T60-30	21	Needle Bearing (2)	B-710			
10	Ball Bearing	9100KDD	22	Cam Gear	244522-C			
11	Snap Ring	51111	23	Bottom Cover	TN88P			
12	End Nut	EN-4105	24	Screw #2 (8)	S-1006			