

D & D PRODUCTION INC.®

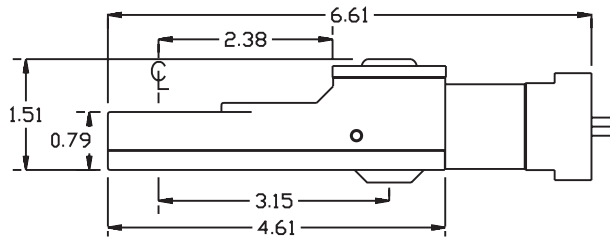
# ASSEMBLY NO. TN82B HEAD NO. 251

TUBE NUT ASS'Y  
Rev. A  
03-05-07

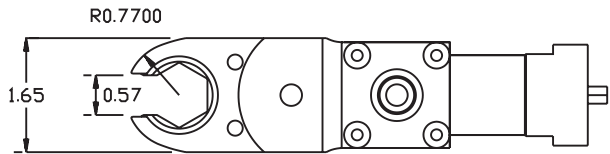
2500 WILLIAMS DRIVE • WATERFORD, MI • 48328

PHONE : (248) 334-2112 • FAX : (248) 334-0062

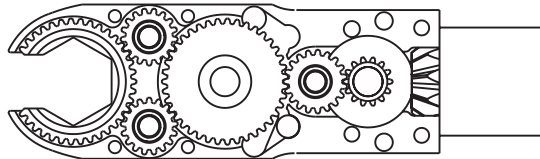
## SIDE VIEW



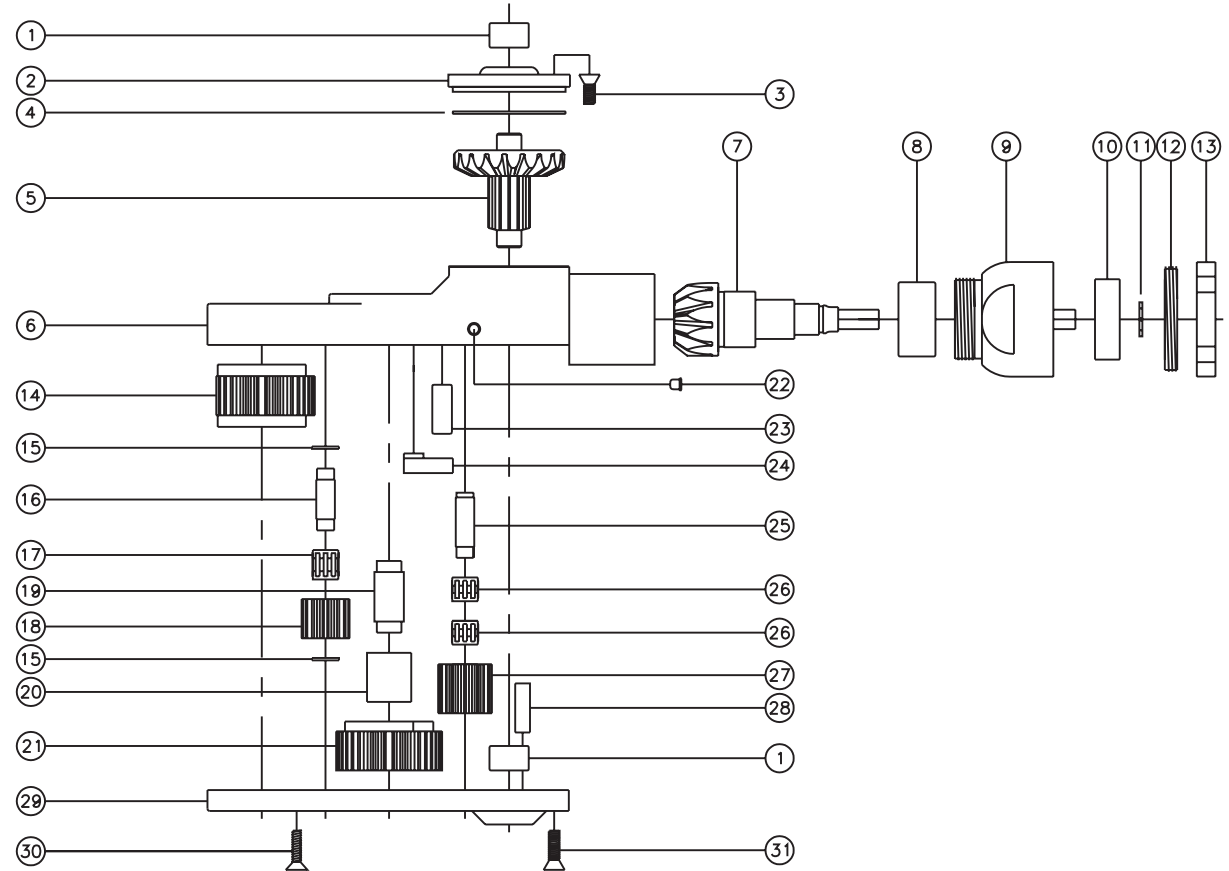
## TOP VIEW



## GEAR ASSEMBLY



## PARTS BLOWOUT



ITEM	DESCRIPTION	PART NO.	ITEM	DESCRIPTION	PART NO.	ITEM	DESCRIPTION	PART NO.
1	Needle Bearing (2)	M-551	13	Motor Nut	N-T60-30	25	Lg. Idler Pin	IP-6M29i
2	Cap	BC-661G1	14	Socket Gear	303925i-1-XX	26	Needle Bearing (2)	K698Mi
3	Screw #1 (4)	S-806	15	Thrust Race (4)	TRA-411MB	27	Lg. Idler Gear	301920i
4	Thrust Race	TRA-1423i	16	Sm. Idler Pin (2)	IP-6M25i	28	Dowel Pin (2)	DP-1210
5	Bevel/Drive Gear Assembly	301446G4	17	Needle Bearing (2)	K6910Mi	29	Bottom Plate	TN82BP
6	Gear Housing	TN82BH	18	Sm. Idler Gear (2)	301716i	30	Screw #2 (4)	S-608
7	Bevel Pinion Gear	661P-T6030	19	Cam Pin	CP-61027i	31	Screw #3 (4)	S-808
8	Needle Bearing	HK-1812i	20	Needle Bearing	B-610			
9	Motor Coupling	MC-T60-30	21	Cam Gear	303920i-C			
10	Ball Bearing	9100KDD	22	Grease Fitting	1877			
11	Snap Ring	51111	23	Pawl Spring	RSS-0810i			
12	End Nut	EN-4105	24	Pawl	0806i-RPS-P			