

D & D PRODUCTION INC.®

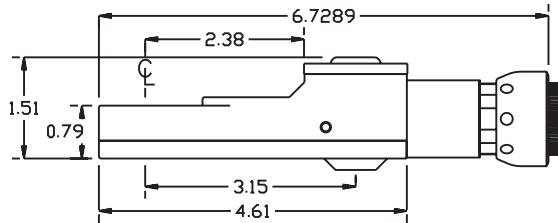
# ASSEMBLY NO. TN82 HEAD NO. 219

TUBE NUT ASS'Y  
Rev. A  
03-02-07

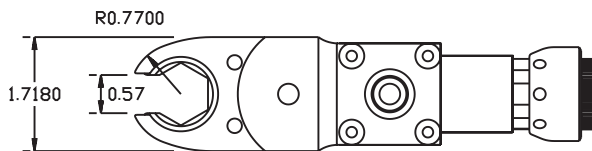
2500 WILLIAMS DRIVE • WATERFORD, MI • 48328

PHONE : (248) 334-2112 • FAX : (248) 334-0062

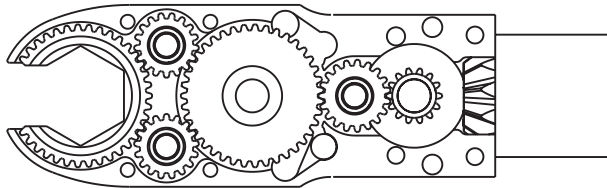
## SIDE VIEW



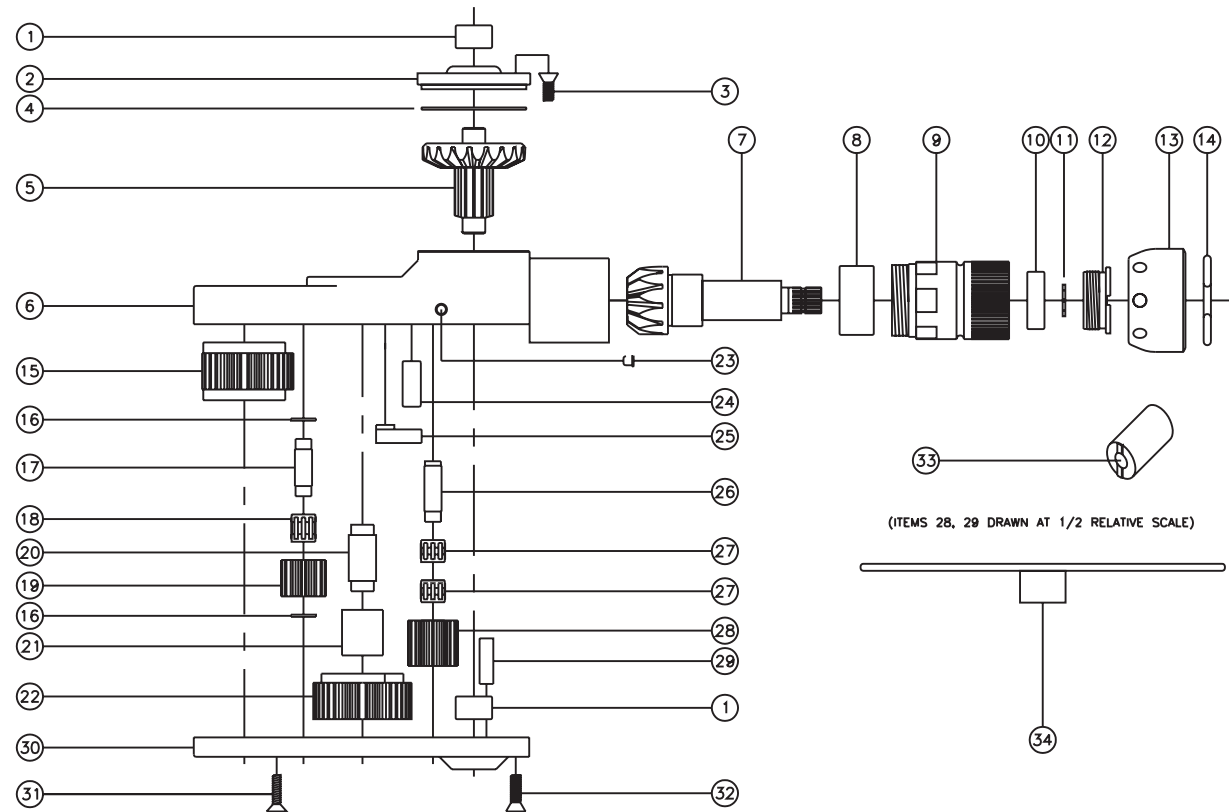
## TOP VIEW



## GEAR ASSEMBLY



## PARTS BLOWOUT



(ITEMS 28, 29 DRAWN AT 1/2 RELATIVE SCALE)

ITEM	DESCRIPTION	PART NO.	ITEM	DESCRIPTION	PART NO.	ITEM	DESCRIPTION	PART NO.
1	Needle Bearing (2)	M-551	13	Motor Nut	N-0841	25	Pawl	0806i-RPS-P
2	Cap	BC-661G1	14	Circlip	1021-C	26	Lg. Idler Pin	IP-6M29i
3	Screw #1 (4)	S-806	15	Socket Gear	303925i-1-XX	27	Needle Bearing (2)	K698i
4	Thrust Race	TRA-1423i	16	Thrust Race (4)	TRA-411MB	28	Lg. Idler Gear	301920i
5	Bevel/Drive Gear Assembly	301446G4	17	Sm. Idler Pin (2)	IP-6M25i	29	Dowel Pin (2)	DP-1210
6	Gear Housing	TN82H	18	Needle Bearing (2)	B-6910Mi	30	Bottom Plate	TN82P
7	Bevel Pinion Gear	661P-10	19	Sm. Idler Gear (2)	301716i	31	Screw #2 (4)	S-608
8	Needle Bearing	HK-1812i	20	Cam Pin	CP-61027i	32	Screw #3 (4)	S-808
9	Motor Coupling	MC-10	21	Needle Bearing	B-610	33	End Nut Socket (Optional)	ENT-10
10	Ball Bearing	699Zi	22	Cam Gear	303920i-C	34	Motor Coupling Wrench	CW-10
11	Snap Ring	51111	23	Grease Fitting	1877			
12	End Nut	EN-0976	24	Pawl Spring	RSS-0810i			