



D & D PRODUCTION INC.

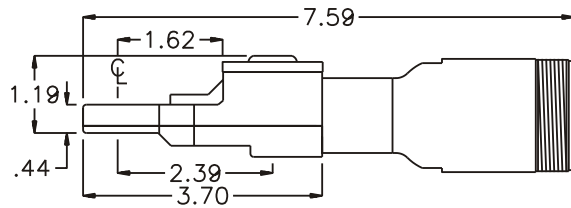
ASSEMBLY NO. TN72L HEAD NO. 208

TUBE NUT ASS'Y
Rev. B
04-24-02

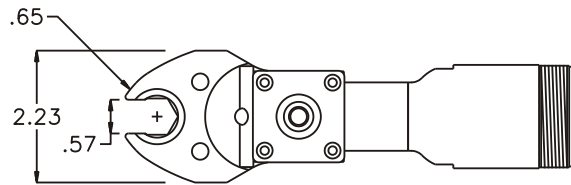
2500 WILLIAMS DRIVE • WATERFORD, MI • 48328

PHONE : (248) 334-2112 • FAX : (248) 334-0062

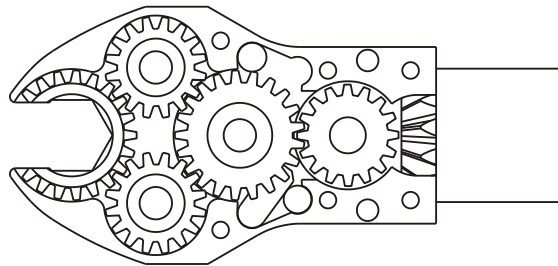
SIDE VIEW



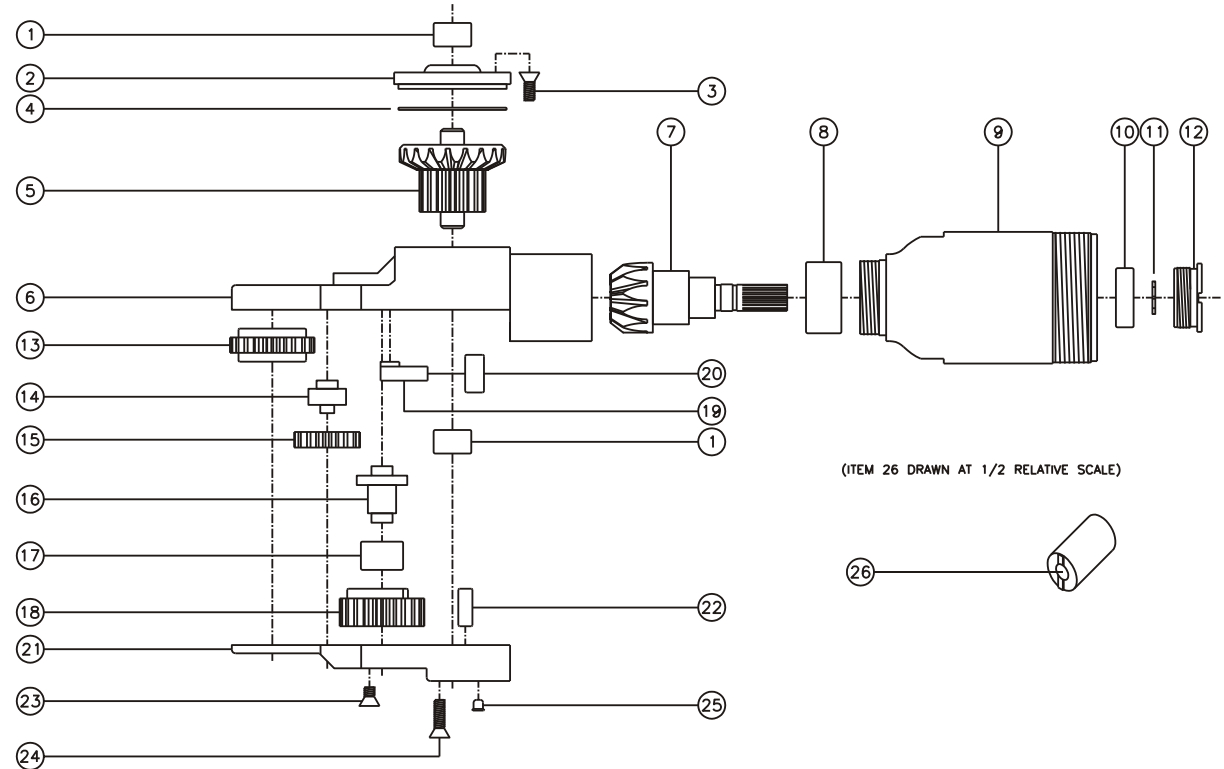
TOP VIEW



GEAR ASSEMBLY



PARTS BLOWOUT



ITEM	DESCRIPTION	PART NO.	ITEM	DESCRIPTION	PART NO.	ITEM	DESCRIPTION	PART NO.
1	Needle Bearing (2)	M-551	11	Snap Ring	51111	21	Bottom Cover	TN72LP
2	Cap	BC-661G1	12	End Nut	EN-0976	22	Dowel Pin (2)	DP-1208
3	Screw #1 (4)	S-806	13	Socket Gear	202114i-1-XX	23	Screw #2 (2)	S-804
4	Thrust Race	TRA-1423i	14	Idler Pin (2)	IP-1614i	24	Screw #3 (4)	S-808
5	Bevel/Drive Gear Assembly	201642G1	15	Idler Gear (2)	201607i	25	Grease Fitting	1877
6	Gear Housing	TN72LH	16	Cam Pin	IP-6624i	26	End Nut Socket (Optional)	ENT-10
7	Bevel Pinion Gear	661P-66	17	Needle Bearing	B-66i			
8	Needle Bearing	HK-1812i	18	Cam Gear	202116i-C			
9	Motor Coupling	MC-6645	19	Pawl	0806i-RPS-P			
10	Ball Bearing	699Zi	20	Pawl Spring	RSS-0816i			