

D & D PRODUCTION INC.®

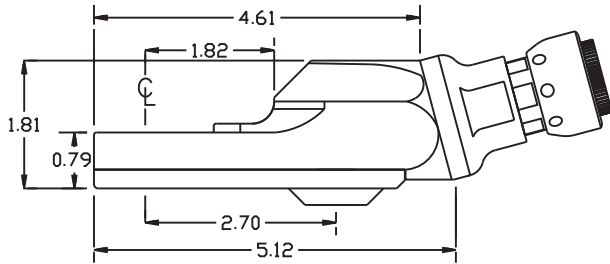
ASSEMBLY NO. TN72BMA15 HEAD NO. 501

TUBE NUT ASS'Y
Rev. A
04-17-09

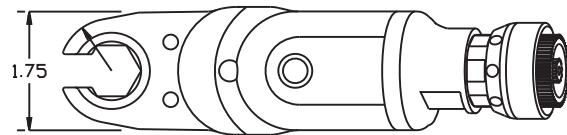
2500 WILLIAMS DRIVE • WATERFORD, MI • 48328

PHONE : (248) 334-2112 • FAX : (248) 334-0062

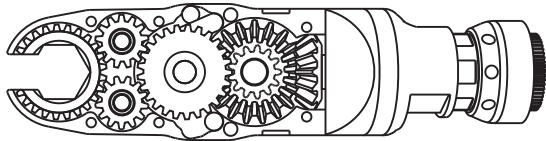
SIDE VIEW



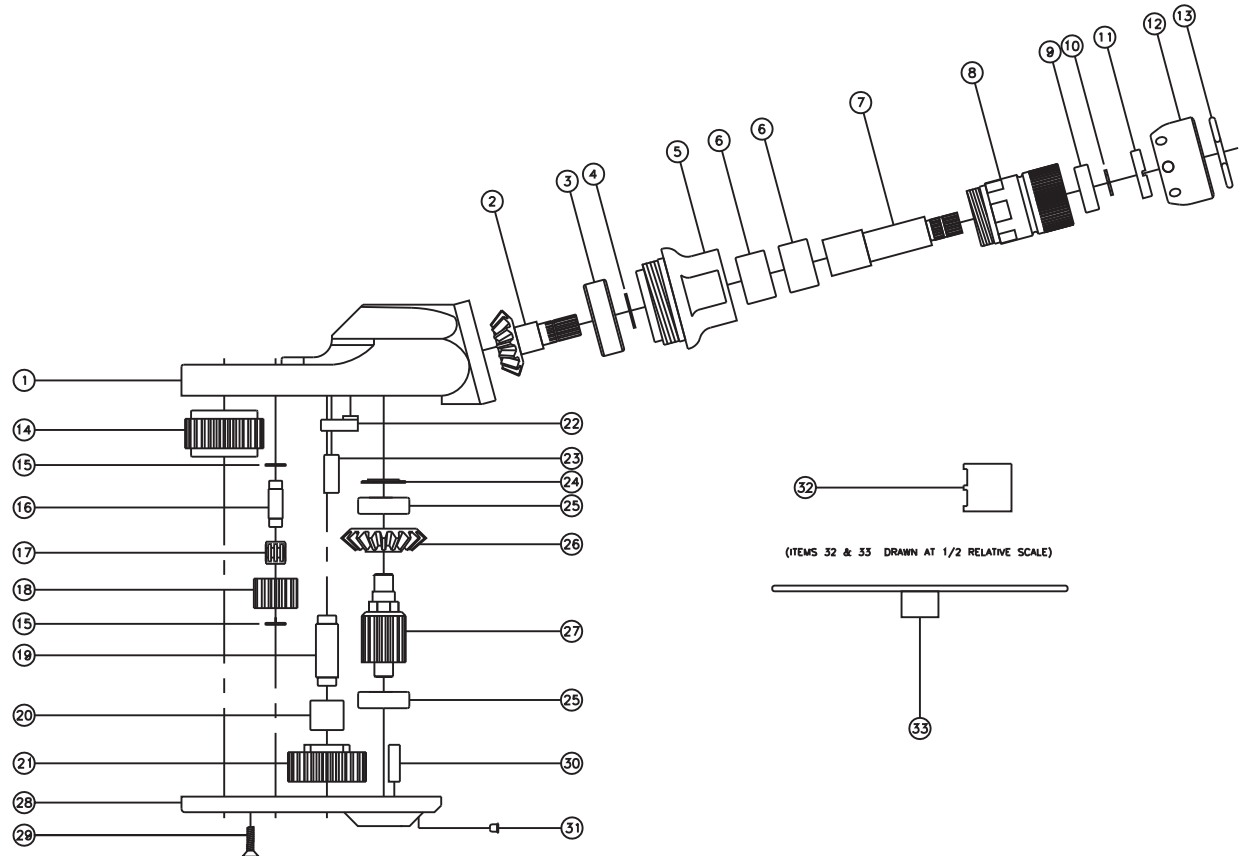
R0.7700



GEAR ASSEMBLY



PARTS BLOWOUT



(ITEMS 32 & 33 DRAWN AT 1/2 RELATIVE SCALE)

ITEM	DESCRIPTION	PART NO.	ITEM	DESCRIPTION	PART NO.	ITEM	DESCRIPTION	PART NO.
1	Gear Housing	TN72BMA15-H	13	Circlip	1021-C	25	Ball Bearing (2)	38KD
2	Bevel Pinion Gear	151-P	14	Socket Gear	202525-1-XX	26	Bevel Gear	151-G
3	Ball Bearing	201KD	15	Thrust Race (4)	TRA-411MB	27	Drive Gear	201358-DG
4	Snap Ring	SH-37	16	Idler Pin (2)	IP-6M25	28	Bottom Cover	TN72BMA15-P
5	Attachment Coupling	MC15-A	17	Needle Bearing (2)	K6910Mi	29	Screw (6)	S-608
6	Needle Bearing (2)	B-108i	18	Idler Gear (2)	201316	30	Dowel Pin (2)	DP-1210
7	Drive Shaft	DS-S2074	19	Cam Pin	IP-61029	31	Grease Fitting	1877
8	Motor Coupling	MC-ST61-10	20	Needle Bearing	B-610	32	End Nut Socket (Optional)	ENT-ST61-10
9	Ball Bearing	699Zi	21	Cam Gear	202520-C	33	Motor Coupling Wrench (Optional)	CW-10
10	Snap Ring	51111	22	Pawl	1004-RPS-P			
11	End Nut	EN-ST61-10	23	Pawl Spring	RSS-0821			
12	Motor Nut	N-0841B	24	Plug	PL-CF15X			