



D & D PRODUCTION INC.®

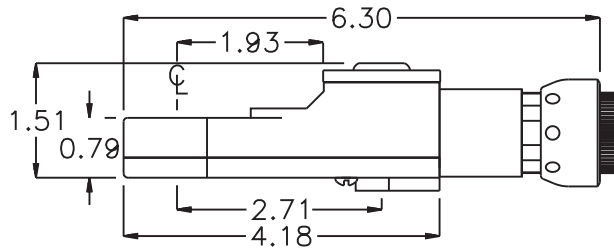
ASSEMBLY NO. TN72BM HEAD NO. 240

TUBE NUT ASS'Y
Rev. A
02-03-09

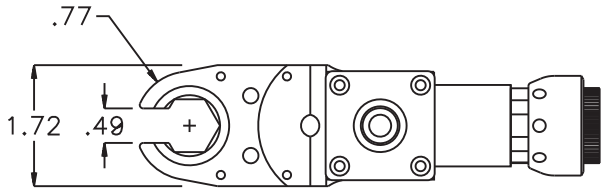
2500 WILLIAMS DRIVE • WATERFORD, MI • 48328

PHONE : (248) 334-2112 • FAX : (248) 334-0062

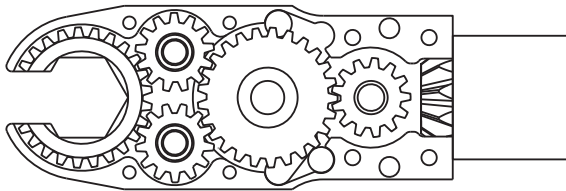
SIDE VIEW



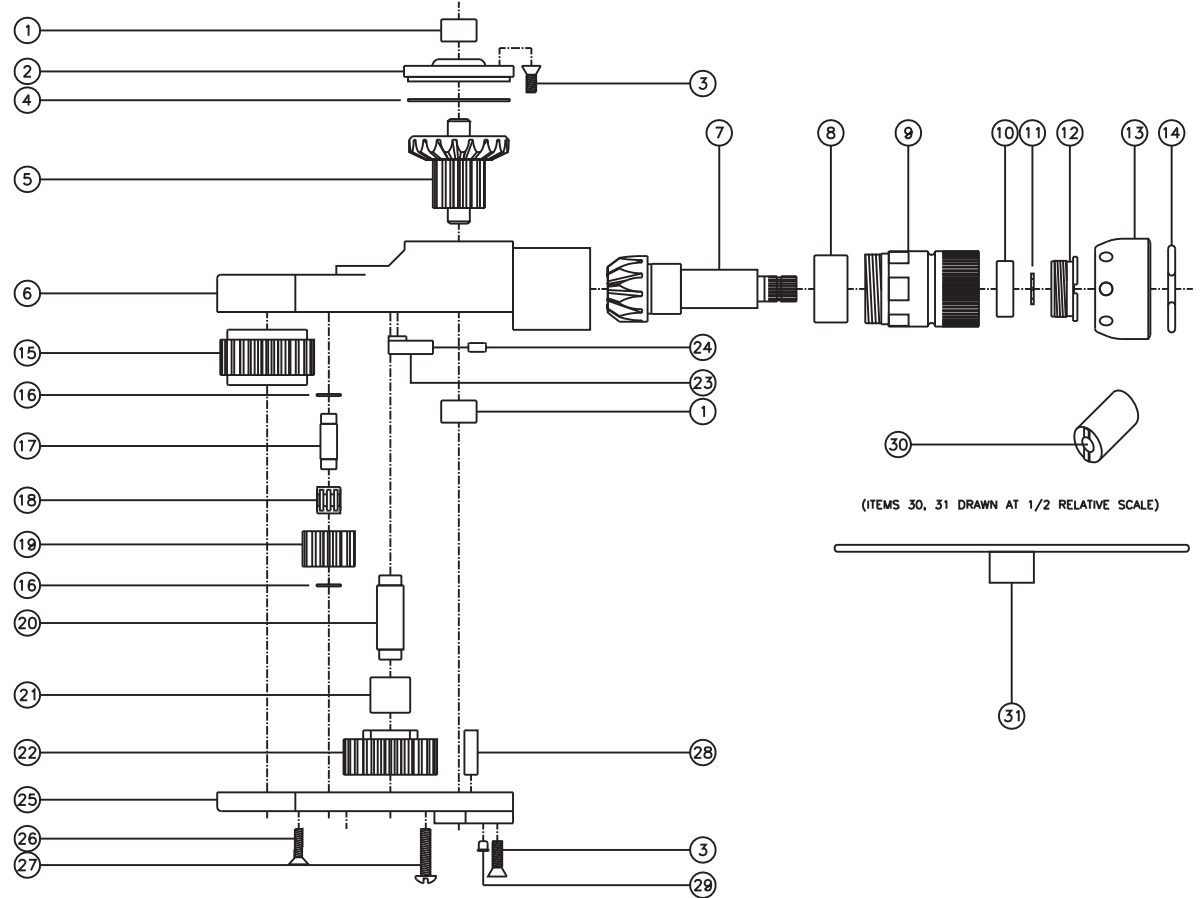
TOP VIEW



GEAR ASSEMBLY



PARTS BLOWOUT



ITEM	DESCRIPTION	PART NO.	ITEM	DESCRIPTION	PART NO.	ITEM	DESCRIPTION	PART NO.
1	Needle Bearing (2)	M-551	13	Motor Nut	N-0841	25	Bottom Cover	TN72BMP
2	Cap	BC-661G1	14	Circlip	1021-C	26	Screw #2 (4)	S-608
3	Screw #1 (8)	S-808	15	Socket Gear	202525-1-XX	27	Spring Retainer Screw (2)	S-822B
4	Thrust Race	TRA-1423i	16	Thrust Race (4)	TRA-411MB	28	Dowel Pin (2)	DP-1210
5	Bevel/Drive Gear Assembly	201347G1	17	Idler Pin (2)	IP-6M25	29	Grease Fitting	1877
6	Gear Housing	TN72BH	18	Needle Bearing #2 (2)	K6910Mi	30	End Nut Socket (Optional)	ENT-10
7	Bevel Pinion Gear	661P-10	19	Idler Gear (2)	201316	31	Motor Coupling Wrench (Optional)	CW-10
8	Needle Bearing #1	HK-1812i	20	Cam Pin	IP-61029			
9	Motor Coupling	MC-10	21	Needle Bearing #3	B-610			
10	Ball Bearing	699Zi	22	Cam Gear	202520-C			
11	Snap Ring	51111	23	Pawl	0806i-RPS-P			
12	End Nut	EN-0976	24	Pawl Spring	RSS-0802i			