

D & D PRODUCTION INC.®

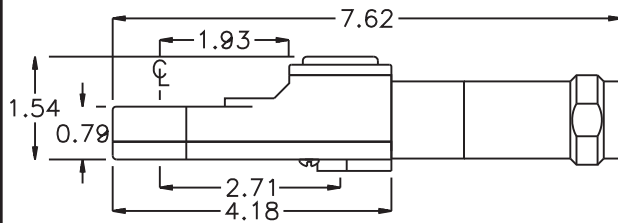
ASSEMBLY NO. TN72BM HEAD NO. 229W

TUBE NUT ASS'Y
Rev. A
08-05-08

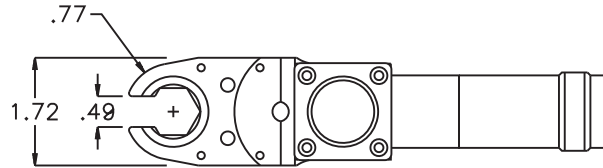
2500 WILLIAMS DRIVE • WATERFORD, MI • 48328

PHONE : (248) 334-2112 • FAX : (248) 334-0062

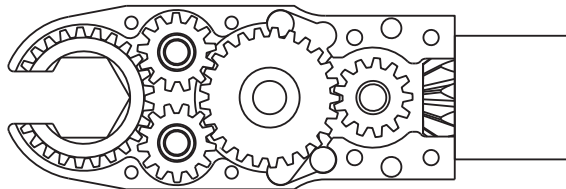
SIDE VIEW



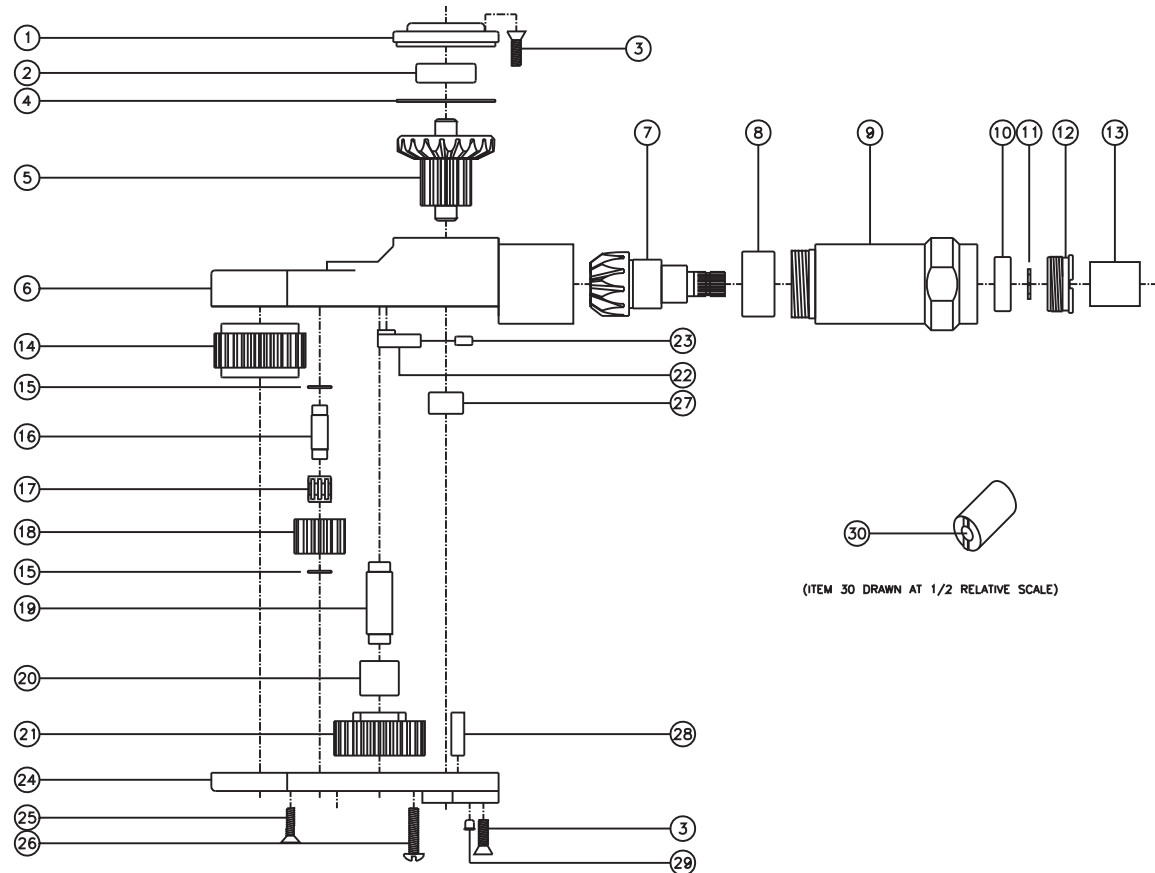
TOP VIEW



GEAR ASSEMBLY



PARTS BLOWOUT



ITEM	DESCRIPTION	PART NO.	ITEM	DESCRIPTION	PART NO.	ITEM	DESCRIPTION	PART NO.
1	Cap	BC-661G1B	13	Drive Coupling	DS-2023	25	Screw #2 (4)	S-608
2	Ball Bearing	38KD	14	Socket Gear	202525-1-XX	26	Spring Retainer Screw (2)	S-822B
3	Screw #1 (8)	S-808	15	Thrust Race (4)	TRA-411MB	27	Needle Bearing #2	M-551
4	Thrust Race	TRA-1423i	16	Idler Pin (2)	IP-6M25	28	Dowel Pin (2)	DP-1210
5	Bevel/Drive Gear Assembly	201347BG1	17	Needle Bearing #1 (2)	K6910Mi	29	Grease Fitting	1877
6	Gear Housing	TN72BH	18	Idler Gear (2)	201316	30	End Nut Socket (Optional)	ENT-10
7	Bevel Pinion Gear	661P-10B	19	Cam Pin	IP-61029			
8	Needle Bearing	HK-1812i	20	Needle Bearing #1	B-610			
9	Motor Coupling	MC-ETD-DS7-10S	21	Cam Gear	202520-C			
10	Ball Bearing	699Zi	22	Pawl	0806i-RPS-P			
11	Snap Ring	51111	23	Pawl Spring	RSS-0802i			
12	End Nut	EN-0976C	24	Bottom Cover	TN72BMP			