



D & D PRODUCTION INC.

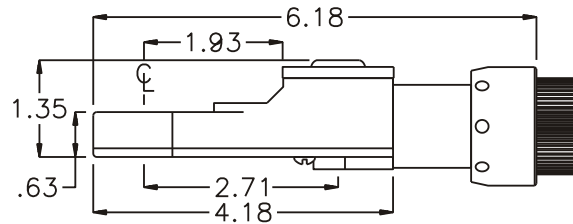
ASSEMBLY NO. TN72BLE HEAD NO. 212

TUBE NUT ASS'Y
Rev. A
05-22-01

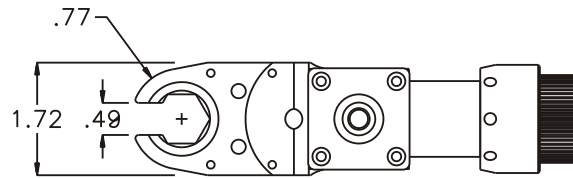
2500 WILLIAMS DRIVE • WATERFORD, MI • 48328

PHONE : (248) 334-2112 • FAX : (248) 334-0062

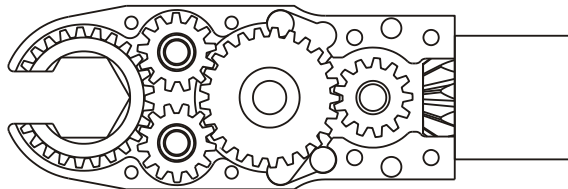
SIDE VIEW



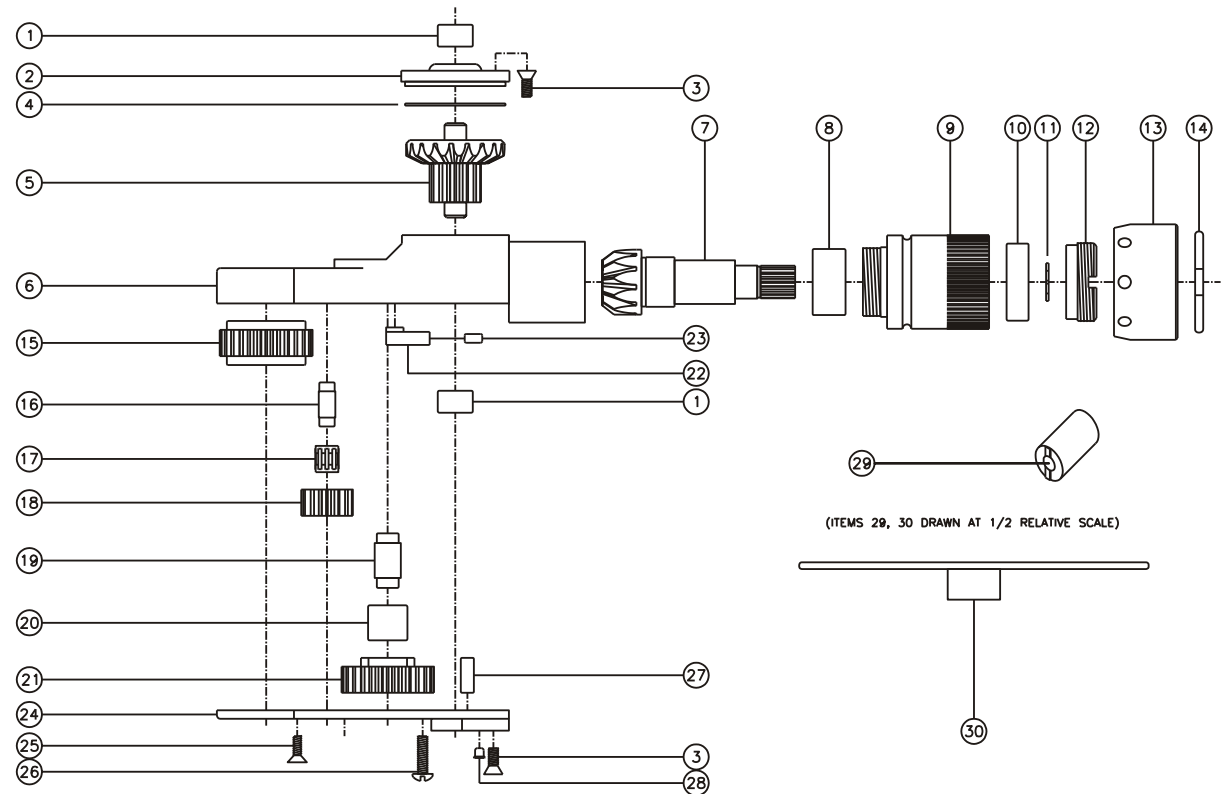
TOP VIEW



GEAR ASSEMBLY



PARTS BLOWOUT



ITEM	DESCRIPTION	PART NO.	ITEM	DESCRIPTION	PART NO.	ITEM	DESCRIPTION	PART NO.
1	Needle Bearing (2)	M-551	13	Motor Nut	N-13ST	25	Screw #2 (4)	S-606
2	Cap	BC-661G1	14	Circlip	0849-C	26	Spring Retainer Screw (2)	S-817B
3	Screw #1 (8)	S-806	15	Socket Gear	202520i-1-XX	27	Dowel Pin (2)	DP-1208
4	Thrust Race	TRA-1423i	16	Idler Pin (2)	IP-6M20i	28	Grease Fitting	1877
5	Bevel/Drive Gear Assembly	201343G1	17	Needle Bearing (2)	K6910Mi	29	End Nut Socket (Optional)	ENT-ETV13
6	Gear Housing	TN72BLEH	18	Idler Gear (2)	201312i	30	Motor Coupling Wrench (Optional)	CW-ETV13
7	Bevel Pinion Gear	661P-ETV13	19	Cam Pin	CP-6825i			
8	Needle Bearing	HK-1812i	20	Needle Bearing	B-68i			
9	Motor Coupling	MC-ETV13	21	Cam Gear	202516i-C			
10	Ball Bearing	6001	22	Pawl	0806i-RPS-P			
11	Snap Ring	51114	23	Pawl Spring	RSS-0802i			
12	End Nut	EN-0874	24	Bottom Cover	TN72BLEP			