

D & D PRODUCTION INC.®

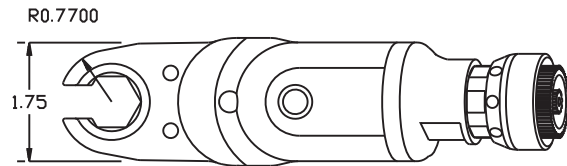
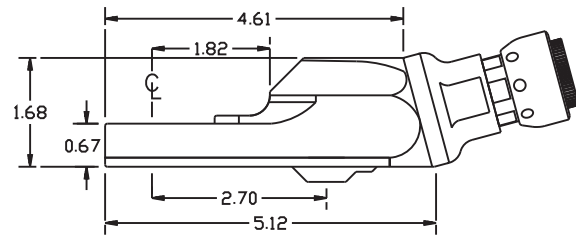
ASSEMBLY NO. TN72BLA15 HEAD NO. 218A

TUBE NUT ASS'Y
Rev. B
07-18-08

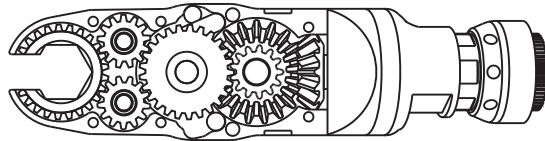
2500 WILLIAMS DRIVE • WATERFORD, MI • 48328

PHONE : (248) 334-2112 • FAX : (248) 334-0062

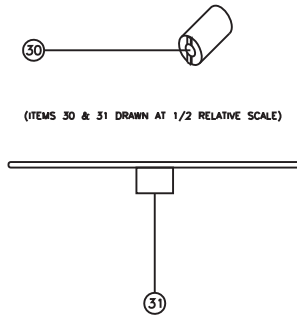
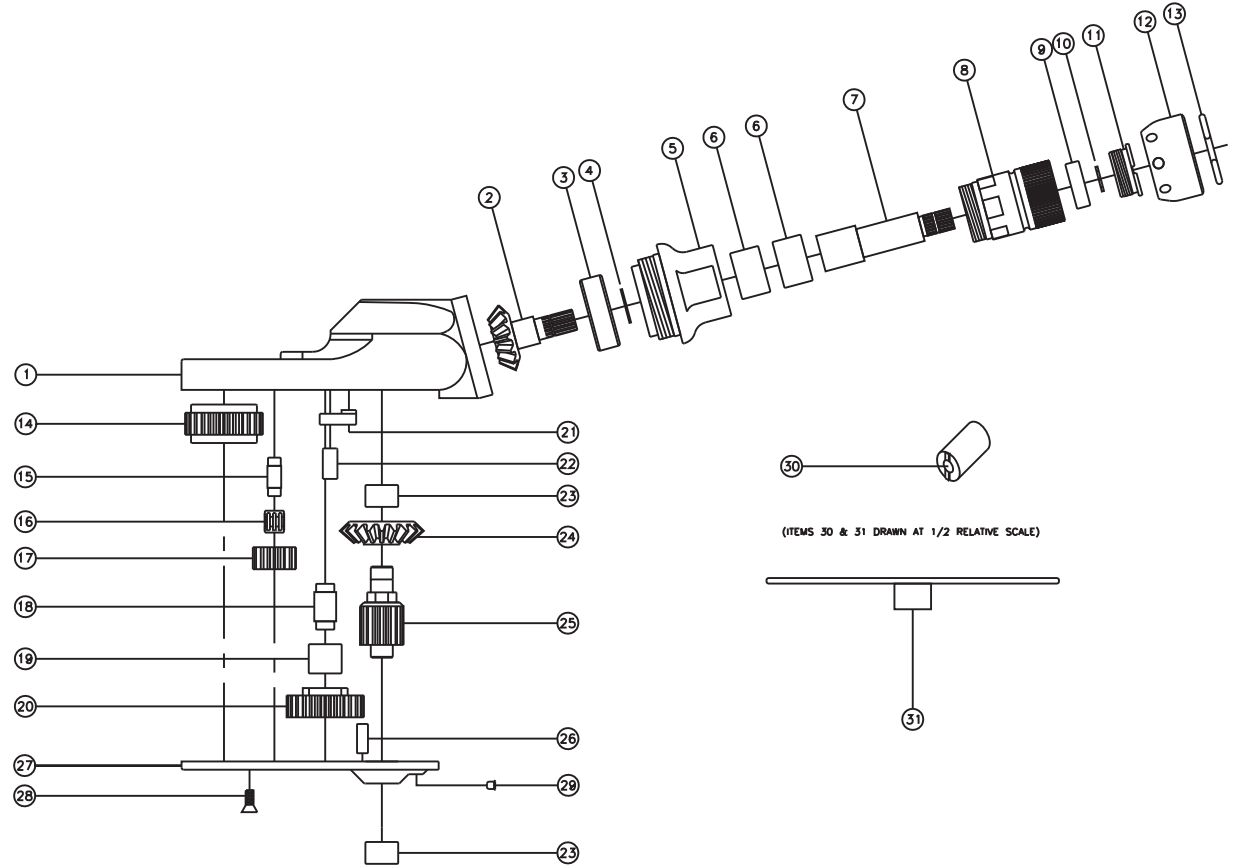
SIDE VIEW



GEAR ASSEMBLY



PARTS BLOWOUT



ITEM	DESCRIPTION	PART NO.	ITEM	DESCRIPTION	PART NO.	ITEM	DESCRIPTION	PART NO.
1	Gear Housing	TN72BLA15-H	13	Circlip	1021-C	25	Drive Gear	201325-DG
2	Bevel Pinion Gear	151-P	14	Socket Gear	202521i-1-XX	26	Dowel Pin (2)	DP-1208
3	Ball Bearing	201KD	15	Idler Pin (2)	IP-6M21i	27	Bottom Cover	TN72BLA15-P
4	Snap Ring	SH-37	16	Needle Bearing (2)	K6910Mi	28	Screw (6)	S-606
5	Attachment Coupling	MC15-A	17	Idler Gear (2)	201312i	29	Grease Fitting	1877
6	Needle Bearing (2)	B-108i	18	Cam Pin	CP-6825i	30	End Nut Socket (Optional)	ENT-10
7	Drive Shaft	DS-S2074	19	Needle Bearing	B-68i	31	Motor Coupling Wrench (Optional)	CW-10
8	Motor Coupling	MC-10	20	Cam Gear	202516Bi-C			
9	Ball Bearing	699Zi	21	Pawl	1004-RPS-P			
10	Snap Ring	51111	22	Pawl Spring	RSS-0817			
11	End Nut	EN-0976	23	Needle Bearing (2)	M-661			
12	Motor Nut	N-0841	24	Bevel Gear	151-G			