



D & D PRODUCTION INC.

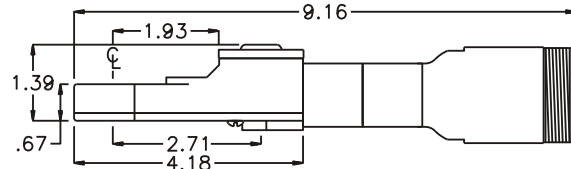
ASSEMBLY NO. TN72BL HEAD NO. 210

TUBE NUT ASS'Y
Rev. A
05-02-01

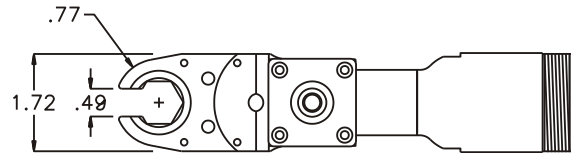
2500 WILLIAMS DRIVE • WATERFORD, MI • 48328

PHONE : (248) 334-2112 • FAX : (248) 334-0062

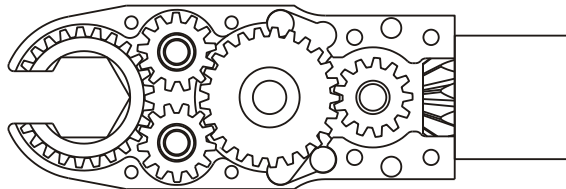
SIDE VIEW



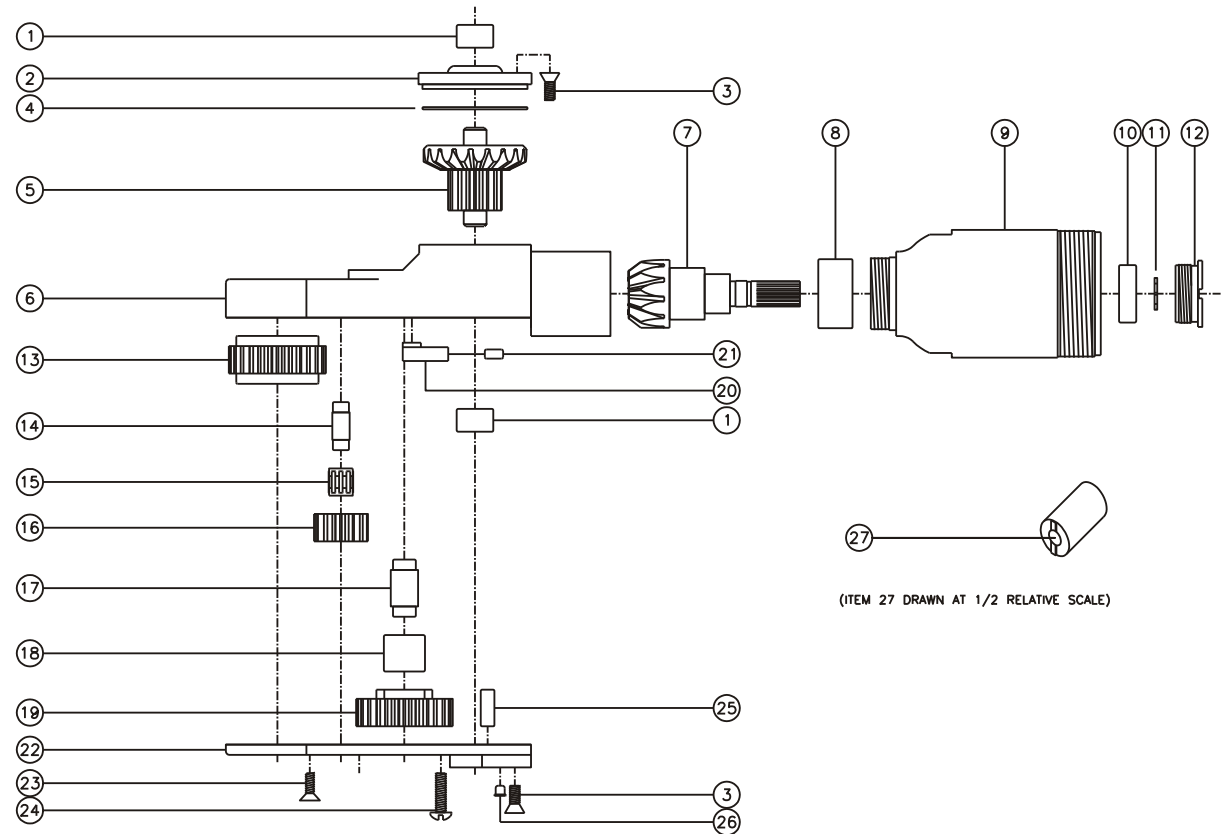
TOP VIEW



GEAR ASSEMBLY



PARTS BLOWOUT



(ITEM 27 DRAWN AT 1/2 RELATIVE SCALE)

ITEM	DESCRIPTION	PART NO.	ITEM	DESCRIPTION	PART NO.	ITEM	DESCRIPTION	PART NO.
1	Needle Bearing (2)	M-551	11	Snap Ring	51111	21	Pawl Spring	RSS-0802i
2	Cap	BC-661G1	12	End Nut	EN-0976	22	Bottom Cover	TN72BLP
3	Screw #1 (8)	S-806	13	Socket Gear	202521i-1-XX	23	Screw #2 (4)	S-606
4	Thrust Race	TRA-1423i	14	Idler Pin (2)	IP-6M21i	24	Spring Retainer Screw (2)	S-817B
5	Bevel/Drive Gear Assembly	201343G1	15	Needle Bearing (2)	K6910Mi	25	Dowel Pin (2)	DP-1208
6	Gear Housing	TN72BH	16	Idler Gear (2)	201312i	26	Grease Fitting	1877
7	Bevel Pinion Gear	661P-66	17	Cam Pin	CP-6825i	27	End Nut Socket (Optional)	ENT-10
8	Needle Bearing	HK-1812i	18	Needle Bearing	B-68i			
9	Motor Coupling (Aluminum)	MCA-6645	19	Cam Gear	202516i-C			
10	Ball Bearing	699Zi	20	Pawl	0806i-RPS-P			