



D & D PRODUCTION INC.®

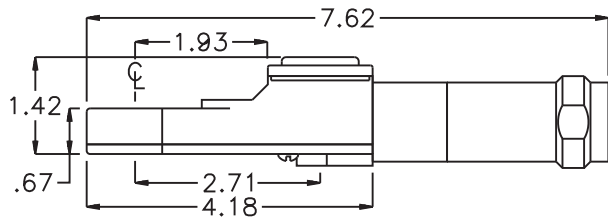
ASSEMBLY NO. TN72BL HEAD NO. 209W

TUBE NUT ASS'Y
Rev. A
01-29-09

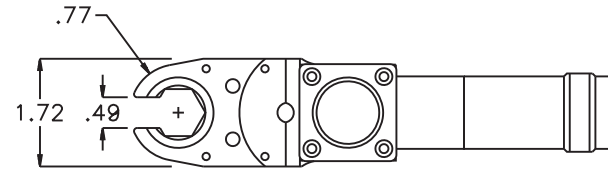
2500 WILLIAMS DRIVE • WATERFORD, MI • 48328

PHONE : (248) 334-2112 • FAX : (248) 334-0062

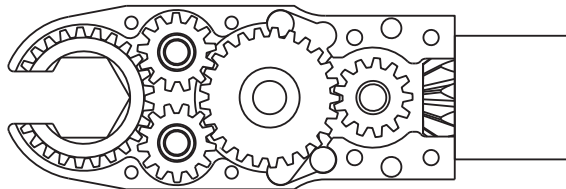
SIDE VIEW



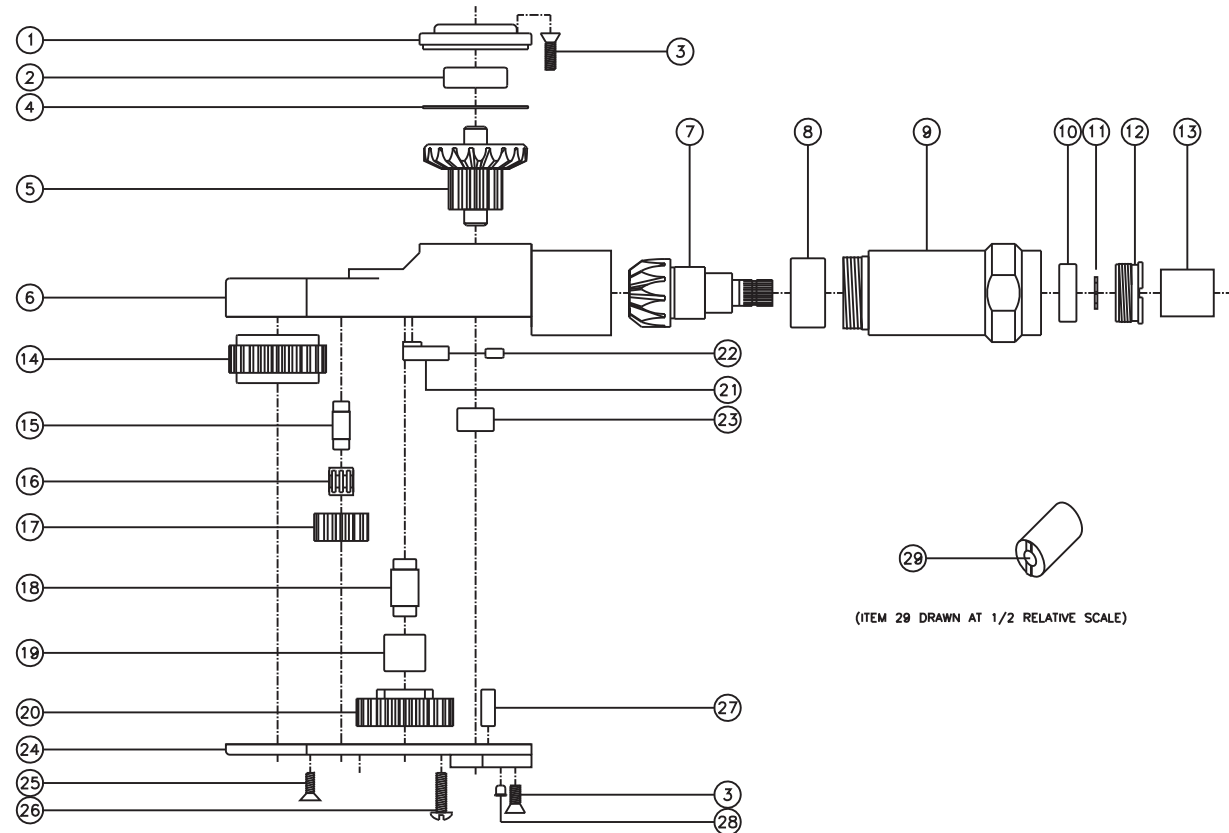
TOP VIEW



GEAR ASSEMBLY



PARTS BLOWOUT



(ITEM 29 DRAWN AT 1/2 RELATIVE SCALE)

ITEM	DESCRIPTION	PART NO.	ITEM	DESCRIPTION	PART NO.	ITEM	DESCRIPTION	PART NO.
1	Cap	BC-661G1B	13	Drive Coupling	DS-2023	25	Screw #2 (4)	S-606
2	Ball Bearing	38KD	14	Socket Gear	202521i-1-XX	26	Spring Retainer Screw (2)	S-817B
3	Screw #1 (8)	S-806	15	Idler Pin (2)	IP-6M21i	27	Dowel Pin (2)	DP-1208
4	Thrust Race	TRA-1423i	16	Needle Bearing #1 (2)	K6910Mi	28	Grease Fitting	1877
5	Bevel/Drive Gear Assembly	201343BG1	17	Idler Gear (2)	201312i	29	End Nut Socket (Optional)	ENT-10
6	Gear Housing	TN72BH	18	Cam Pin	CP-6825i			
7	Bevel Pinion Gear	661P-10B	19	Needle Bearing #1	B-68i			
8	Needle Bearing	HK-1812i	20	Cam Gear	202516i-C			
9	Motor Coupling	MC-ETD-DS7-10S	21	Pawl	0806i-RPS-P			
10	Ball Bearing	699Zi	22	Pawl Spring	RSS-0802i			
11	Snap Ring	51111	23	Needle Bearing	M-551			
12	End Nut	EN-0976C	24	Bottom Cover	TN72BLP			