



D & D PRODUCTION INC.

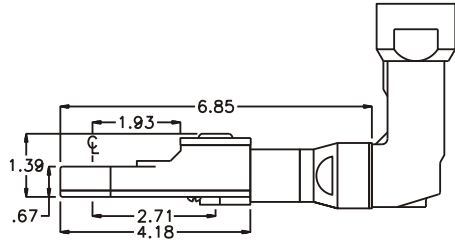
# ASSEMBLY NO. TN72BL HEAD NO. 207

TUBE NUT ASS'Y  
Rev. A  
04-04-01

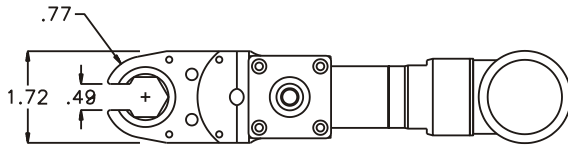
2500 WILLIAMS DRIVE • WATERFORD, MI • 48328

PHONE : (248) 334-2112 • FAX : (248) 334-0062

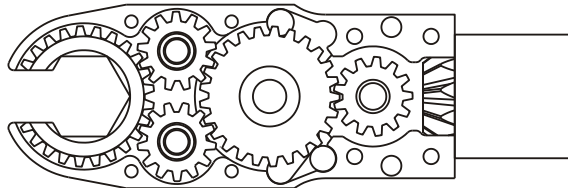
SIDE VIEW



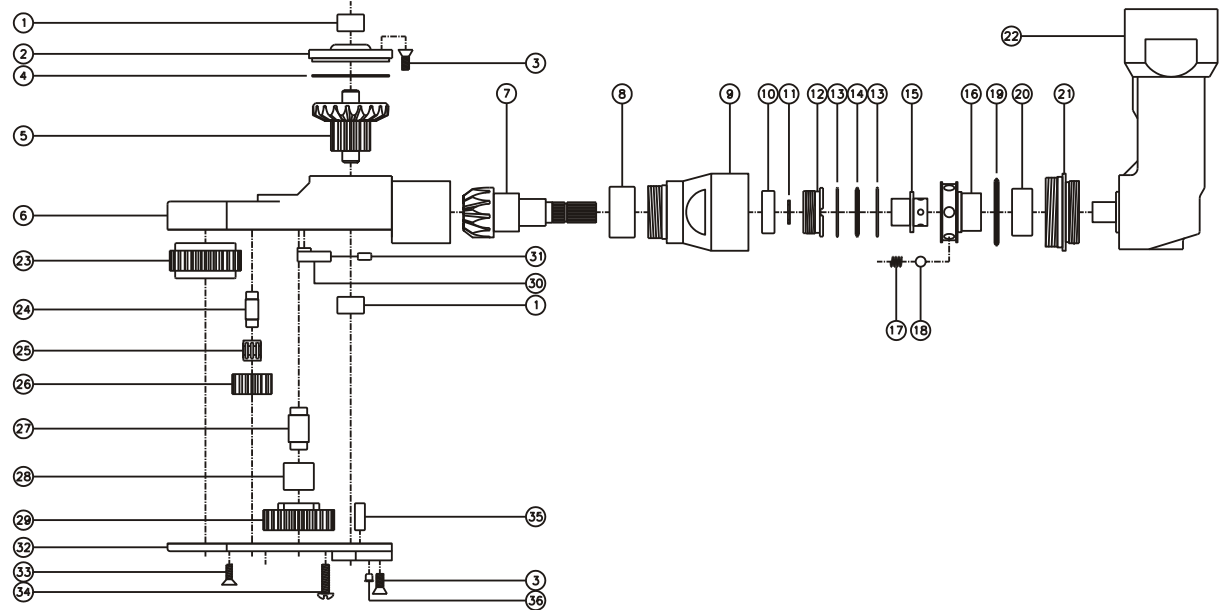
TOP VIEW



GEAR ASSEMBLY



PARTS BLOWOUT



ITEM	DESCRIPTION	PART NO.	ITEM	DESCRIPTION	PART NO.	ITEM	DESCRIPTION	PART NO.
1	Needle Bearing (2)	M-551	14	Thrust Bearing	NTA-815i	27	Cam Pin	CP-6825i
2	Cap	BC-661G1	15	Drive Shaft	DS-04H1622i	28	Needle Bearing	B-68i
3	Screw #1 (8)	S-806	16	Rotor	RA10Ai	29	Cam Gear	202516i-C
4	Thrust Race	TRA-1423i	17	Spring (6)	CS-0608i	30	Pawl	0806i-RPS-P
5	Bevel/Drive Gear Assembly	201343G1	18	Ball Bearing (6)	LB-10i	31	Pawl Spring	RSS-0802i
6	Gear Housing	TN72BH	19	Thrust Bearing	NTA-1220i	32	Bottom Cover	TN72BLP
7	Bevel Pinion Gear	661P-H16	20	Needle Bearing	B-116i	33	Screw #2 (4)	S-606
8	Needle Bearing	HK-1812i	21	Angle Head Adapter	CTI10A-M	34	Spring Retainer Screw (2)	S-817B
9	Clutch Housing	CTI10A-H	22	Angle Head	Cleco M Head	35	Dowel Pin (2)	DP-1208
10	Ball Bearing	699Zi	23	Socket Gear	202521i-1-XX	36	Grease Fitting	1877
11	Snap Ring	51111	24	Idler Pin (2)	IP-6M21i			
12	End Nut	EN-0976	25	Needle Bearing (2)	K6910Mi			
13	Thrust Race (2)	TRA-815i	26	Idler Gear (2)	201312i			