



D & D PRODUCTION INC.

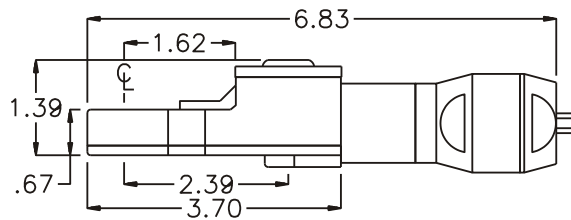
# ASSEMBLY NO. TN72 HEAD NO. 206

TUBE NUT ASS'Y  
Rev. A  
04-03-01

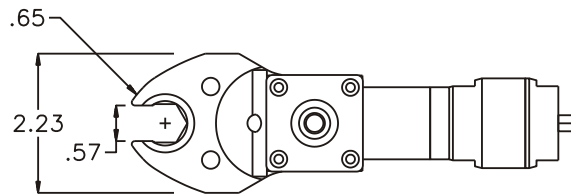
2500 WILLIAMS DRIVE • WATERFORD, MI • 48328

PHONE : (248) 334-2112 • FAX : (248) 334-0062

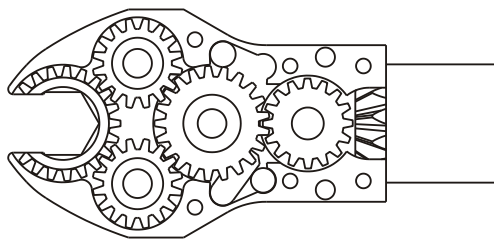
## SIDE VIEW



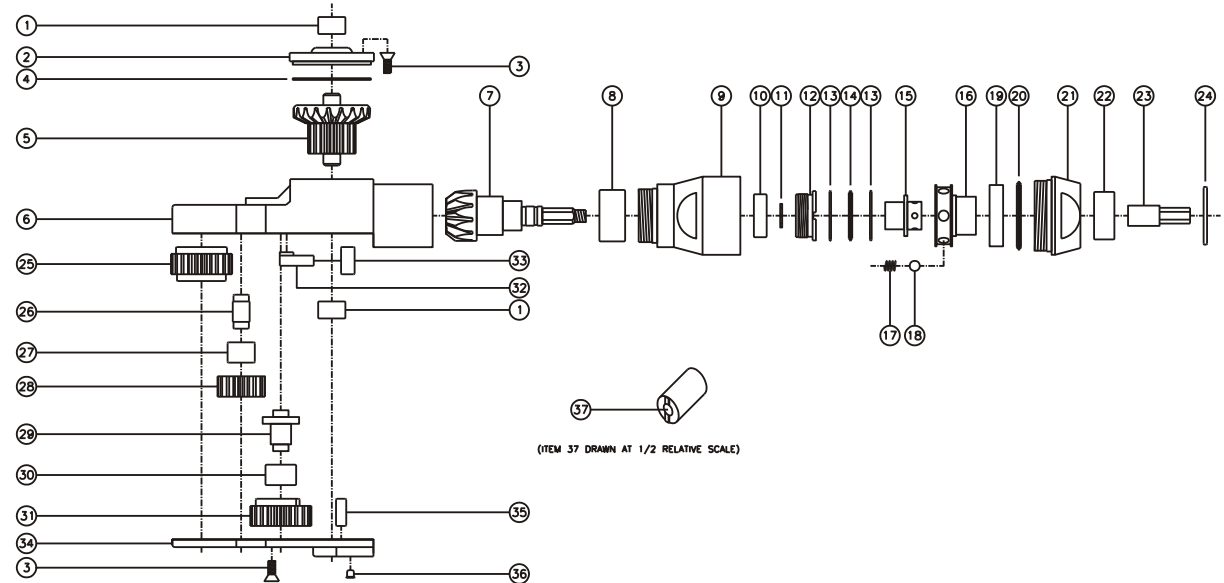
## TOP VIEW



## GEAR ASSEMBLY



## PARTS BLOWOUT



ITEM	DESCRIPTION	PART NO.	ITEM	DESCRIPTION	PART NO.	ITEM	DESCRIPTION	PART NO.
1	Needle Bearing (2)	M-551	14	Thrust Bearing	NTA-815i	27	Needle Bearing (2)	B-56i
2	Cap	BC-661G1	15	Drive Shaft	DS-04H1622i	28	Idler Gear (2)	201612i
3	Screw (10)	S-806	16	Rotor	RA10Ai	29	Cam Pin	IP-6624i
4	Thrust Race	TRA-1423i	17	Spring (6)	CS-0608i	30	Needle Bearing	B-66i
5	Bevel/Drive Gear Assembly	201642G1	18	Ball Bearing (6)	LB-10i	31	Cam Gear	202116i-C
6	Gear Housing	TN72H	19	Retaining Ring	RR10i	32	Pawl	0806i-RPS-P
7	Bevel Pinion Gear	661P-M	20	Thrust Bearing	NTA-1220i	33	Pawl Spring	RSS-0816i
8	Needle Bearing	HK-1812i	21	Motor Coupling (Rear)	CTI10A-NC1-MC	34	Bottom Cover	TN72P
9	Motor Coupling (Front)	CTI10A-H	22	Needle Bearing	B-116i	35	Dowel Pin (2)	DP-1208
10	Ball Bearing	699Zi	23	Drive Bit	DB-04H06Si	36	Grease Fitting	1877
11	Snap Ring	51111	24	Thrust Race	TRB-613i	37	End Nut Socket (Optional)	ENT-10
12	End Nut	EN-0976	25	Socket Gear	202120i-1-XX			
13	Thrust Race (2)	TRA-815i	26	Idler Pin (2)	IP-5620i			