



D & D PRODUCTION INC.

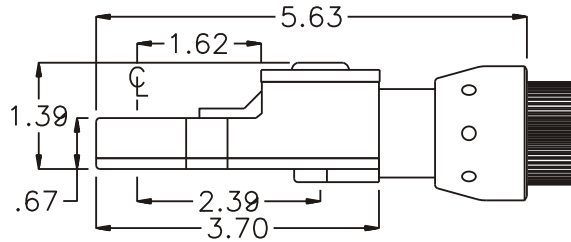
ASSEMBLY NO. TN72 HEAD NO. 203

TUBE NUT ASS'Y
Rev. A
09-21-00

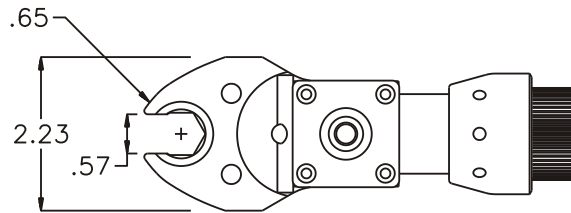
2500 WILLIAMS DRIVE • WATERFORD, MI • 48328

PHONE : (248) 334-2112 • FAX : (248) 334-0062

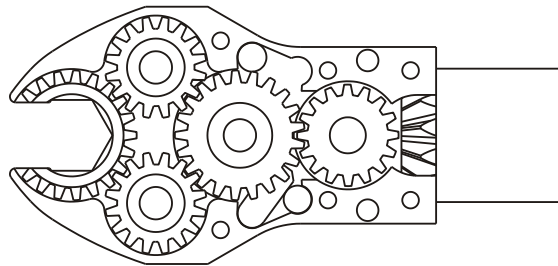
SIDE VIEW



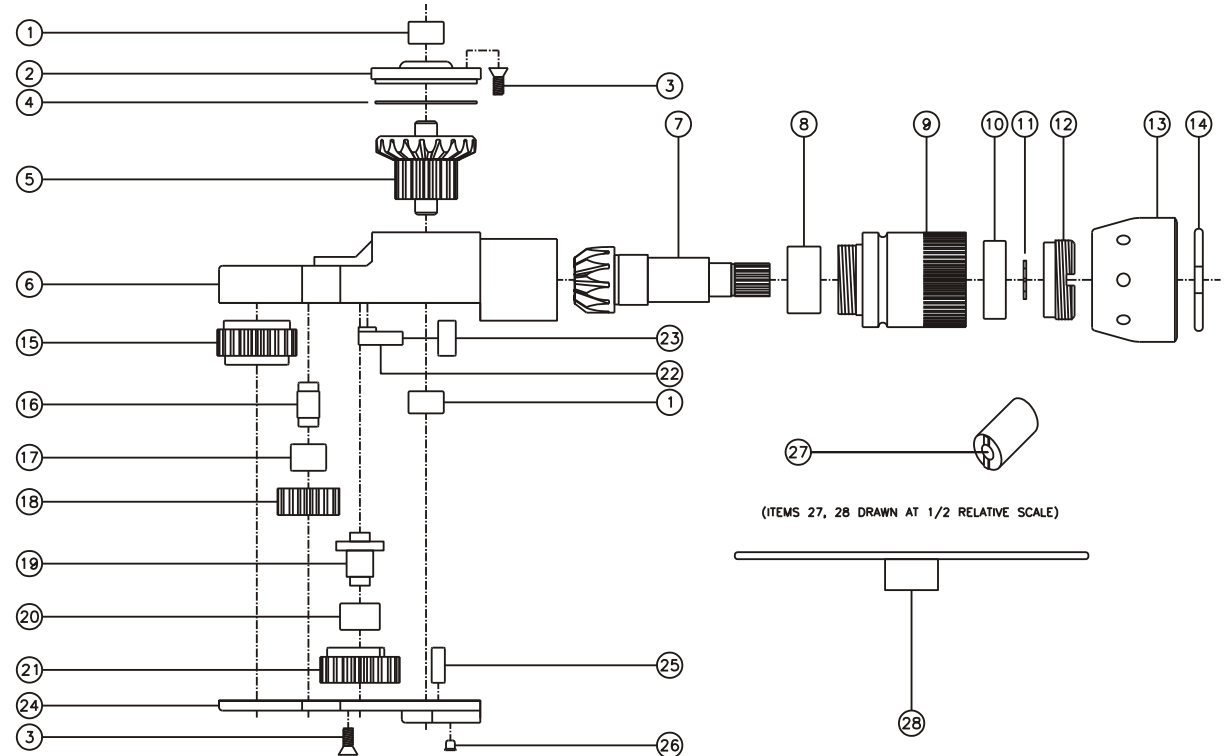
TOP VIEW



GEAR ASSEMBLY



PARTS BLOWOUT



ITEM	DESCRIPTION	PART NO.	ITEM	DESCRIPTION	PART NO.	ITEM	DESCRIPTION	PART NO.
1	Needle Bearing (2)	M-551	11	Snap Ring	51114	21	Cam Gear	202116i-C
2	Cap	BC-661G1	12	End Nut	EN-0874	22	Pawl	0806i-RPS-P
3	Screw (10)	S-806	13	Motor Nut	N-0848	23	Pawl Spring	RSS-0816i
4	Thrust Race	TRA-1423i	14	Circlip	0849-C	24	Bottom Cover	TN72P
5	Bevel/Drive Gear Assembly	201642G1	15	Socket Gear	202120i-1-XX	25	Dowel Pin (2)	DP-1208
6	Gear Housing	TN72H	16	Idler Pin (2)	IP-5620i	26	Grease Fitting	1877
7	Bevel Pinion Gear	661P-ETV13	17	Needle Bearing (2)	B-56i	27	End Nut Socket (Optional)	ENT-ETV13
8	Needle Bearing	HK-1812i	18	Idler Gear (2)	201612i	28	Motor Coupling Wrench (Optional)	CW-ETV13
9	Motor Coupling	MC-ETV13	19	Cam Pin	IP-6624i			
10	Ball Bearing	6001	20	Needle Bearing	B-66i			