



# ASSEMBLY NO. TN72

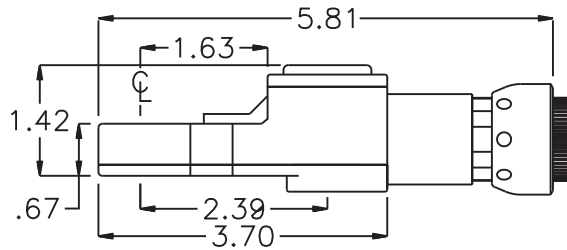
## HEAD NO. 200B

TUBE NUT ASS'Y  
Rev. A  
11-26-08

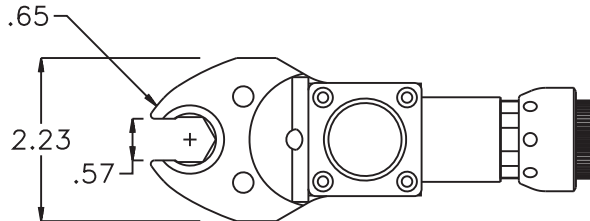
2500 WILLIAMS DRIVE • WATERFORD, MI • 48328

PHONE : (248) 334-2112 • FAX : (248) 334-0062

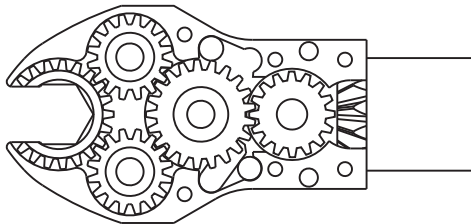
### SIDE VIEW



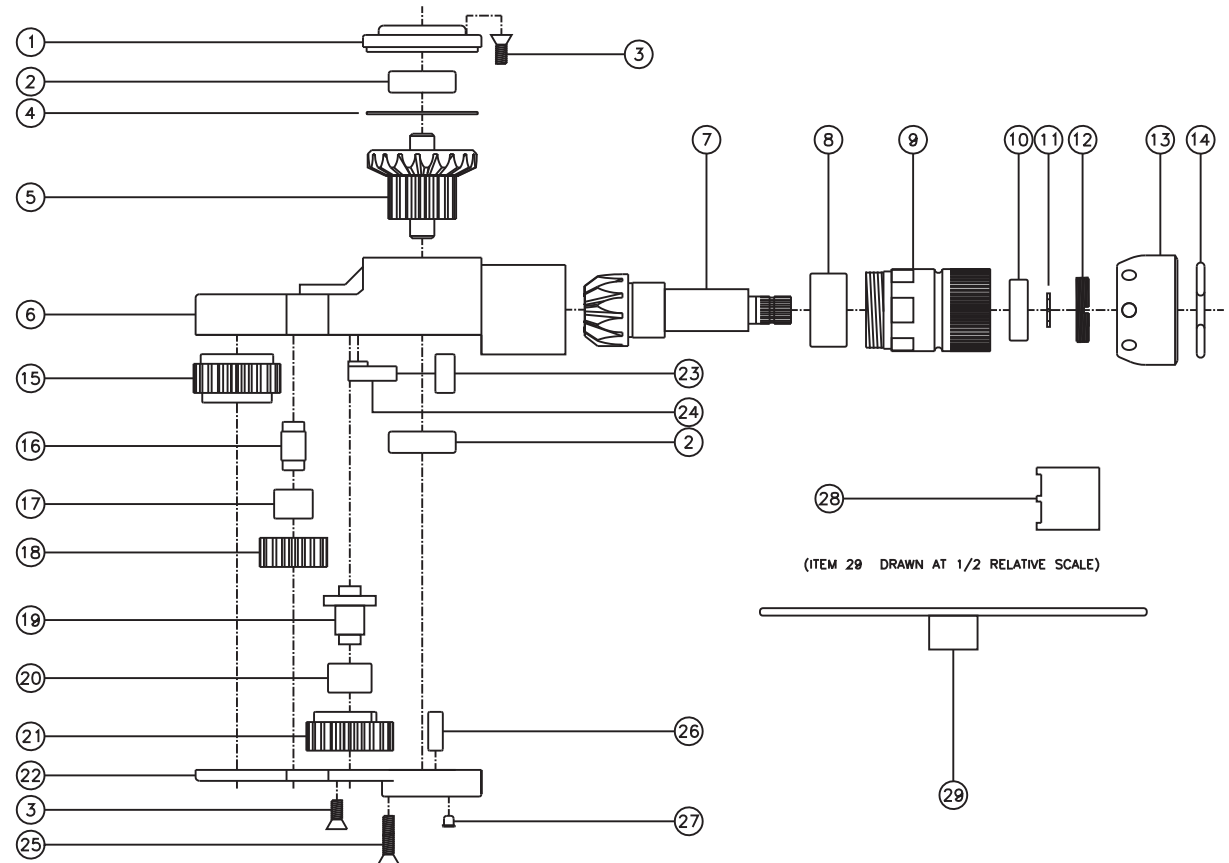
### TOP VIEW



### GEAR ASSEMBLY



### PARTS BLOWOUT



ITEM	DESCRIPTION	PART NO.	ITEM	DESCRIPTION	PART NO.	ITEM	DESCRIPTION	PART NO.
1	Cap	BC-661G1B	11	Snap Ring	51111	21	Cam Gear	202116i-C
2	Ball Bearing (2)	38KD	12	End Nut	EN-ST61-10	22	Bottom Cover	TN72P2
3	Screw #1 (6)	S-806	13	Motor Nut	N-0841B	23	Pawl Spring	RSS-0816i
4	Thrust Race	TRA-1423i	14	Circlip	1021-C	24	Pawl	0806i-RPS-P
5	Bevel/Drive Gear Assembly	201646BG1	15	Socket Gear	202120i-1-XX	25	Screw #2 (4)	S-810
6	Gear Housing	TN72H	16	Idler Pin (2)	IP-5620i	26	Dowel Pin (2)	DP-1208
7	Bevel Pinion Gear	661P-10	17	Needle Bearing (2)	B-56i	27	Grease Fitting	1877
8	Needle Bearing	HK-1812i	18	Idler Gear (2)	201612i	28	End Nut Socket (Optional)	ENT-ST61-10
9	Motor Coupling	MC-ST61-10	19	Cam Pin	IP-6624i	29	Motor Coupling Wrench (Optional)	CW-10
10	Ball Bearing	699Zi	20	Needle Bearing	B-66i			