



D & D PRODUCTION INC.®

ASSEMBLY NO. TN72

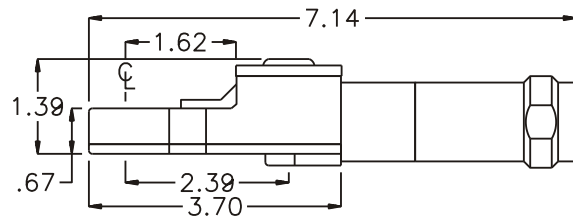
HEAD NO. 199

TUBE NUT ASS'Y
Rev. A
10-04-02

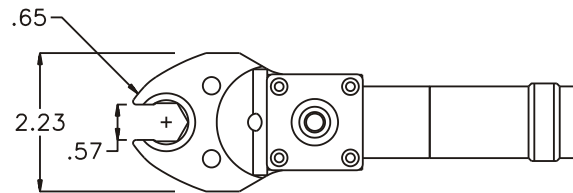
2500 WILLIAMS DRIVE • WATERFORD, MI • 48328

PHONE : (248) 334-2112 • FAX : (248) 334-0062

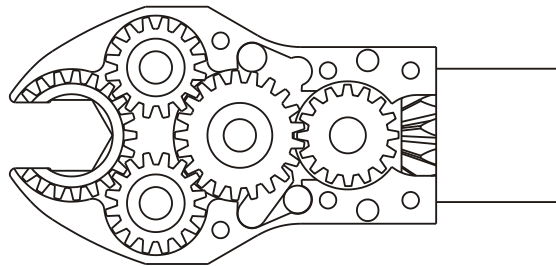
SIDE VIEW



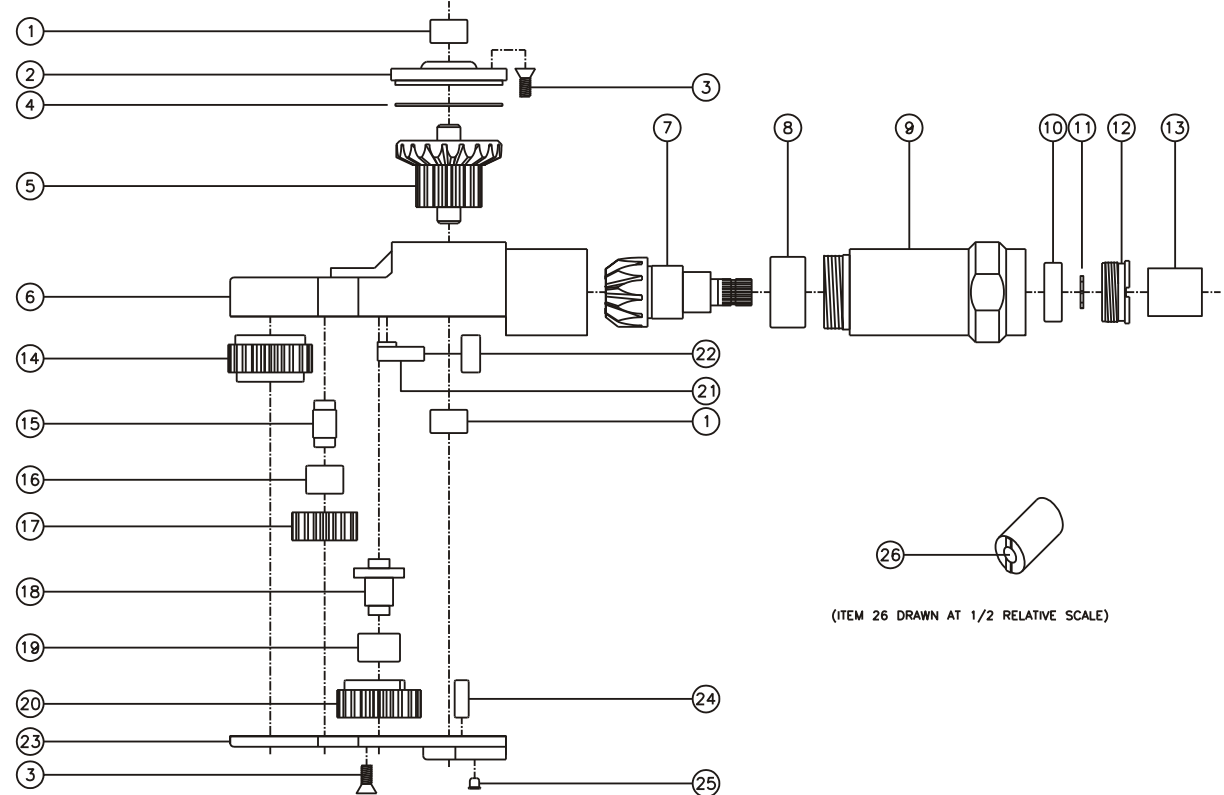
TOP VIEW



GEAR ASSEMBLY



PARTS BLOWOUT



ITEM	DESCRIPTION	PART NO.	ITEM	DESCRIPTION	PART NO.	ITEM	DESCRIPTION	PART NO.
1	Needle Bearing (2)	M-551	11	Snap Ring	51111	21	Pawl	0806i-RPS-P
2	Cap	BC-661G1	12	End Nut	EN-0976C	22	Pawl Spring	RSS-0816i
3	Screw (10)	S-806	13	Drive Coupling	DS-2023	23	Bottom Cover	TN72P
4	Thrust Race	TRA-1423i	14	Socket Gear	202120i-1-XX	24	Dowel Pin (2)	DP-1208
5	Bevel/Drive Gear Assembly	201642G1	15	Idler Pin (2)	IP-5620i	25	Grease Fitting	1877
6	Gear Housing	TN72H	16	Needle Bearing (2)	B-56i	26	End Nut Socket (Optional)	ENT-10
7	Bevel Pinion Gear	661P-10B	17	Idler Gear (2)	201612i			
8	Needle Bearing	HK-1812i	18	Cam Pin	IP-6624i			
9	Motor Coupling	MC-ETD-DS7-10S	19	Needle Bearing	B-66i			
10	Ball Bearing	699Zi	20	Cam Gear	202116i-C			