



D & D PRODUCTION INC.®

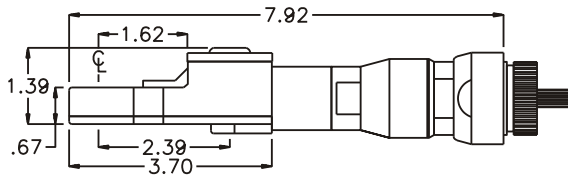
ASSEMBLY NO. TN72 HEAD NO. 198 FOR IR 7RANP1 MOTOR

TUBE NUT ASS'Y
Rev. A
02-22-03

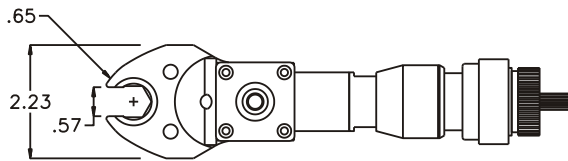
2500 WILLIAMS DRIVE • WATERFORD, MI • 48328

PHONE : (248) 334-2112 • FAX : (248) 334-0062

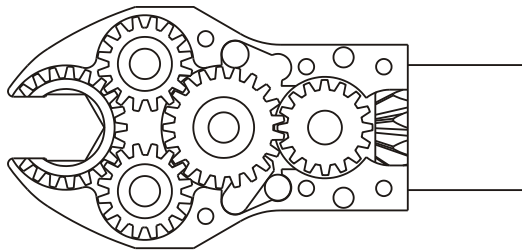
SIDE VIEW



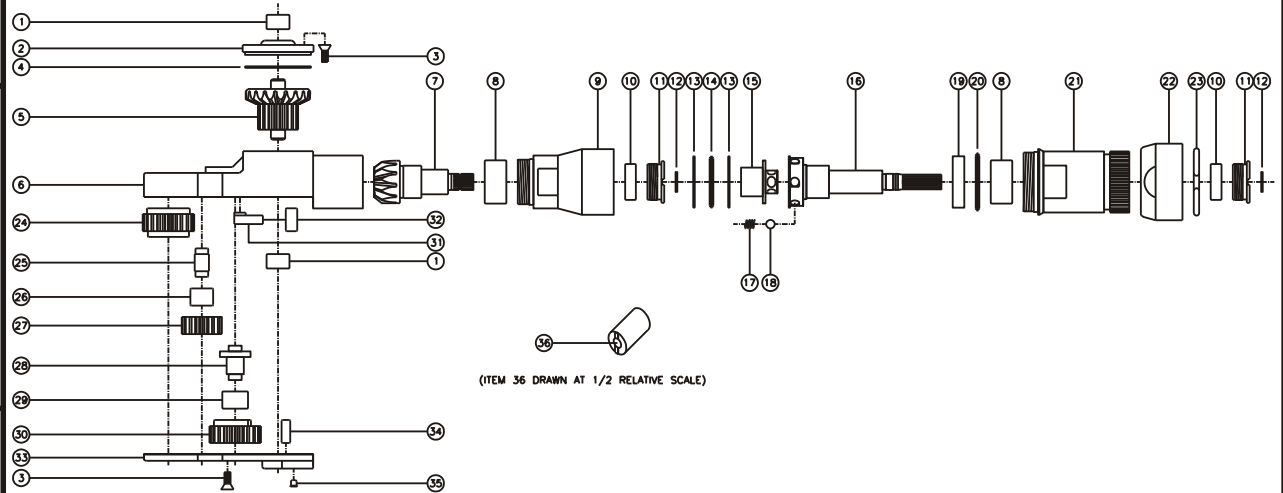
TOP VIEW



GEAR ASSEMBLY



PARTS BLOWOUT



ITEM	DESCRIPTION	PART NO.	ITEM	DESCRIPTION	PART NO.	ITEM	DESCRIPTION	PART NO.
1	Needle Bearing (2)	M-551	13	Thrust Race (2)	TRA-1018i	25	Idler Pin (2)	IP-5620i
2	Cap	BC-661G1	14	Thrust Bearing	NTA-1018i	26	Needle Bearing (2)	B-56i
3	Screw (10)	S-806	15	Drive Shaft	DSA10A-S	27	Idler Gear (2)	201612i
4	Thrust Race	TRA-1423i	16	Rotor	RA10A-IR7	28	Cam Pin	IP-6624i
5	Bevel/Drive Gear Assembly	201642G1	17	Spring (6)	CS-0608i	29	Needle Bearing	B-66i
6	Gear Housing	TN72H	18	Ball Bearing (6)	LB-10i	30	Cam Gear	202116i-C
7	Bevel Pinion Gear	661P-ICH	19	Retaining Ring	RR10i	31	Pawl	0806i-RPS-P
8	Needle Bearing (2)	HK-1812i	20	Thrust Bearing	NTA-1220i	32	Pawl Spring	RSS-0816i
9	Clutch Housing	CTIH10A-H	21	Motor Coupling	MC-ICH-IR7	33	Bottom Cover	TN72P
10	Ball Bearing (2)	699Zi	22	Motor Nut	N-IR7	34	Dowel Pin (2)	DP-1208
11	End Nut (2)	EN-0976	23	Circlip	0849-C	35	Grease Fitting	1877
12	Snap Ring (2)	51111	24	Socket Gear	202120i-1-XX	36	End Nut Socket (Optional)	ENT-10