

D & D PRODUCTION INC.®

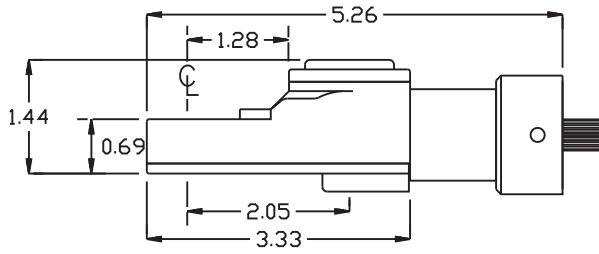
ASSEMBLY NO. TN70 HEAD NO. 194A

TUBE NUT ASS'Y
Rev. A
08-27-07

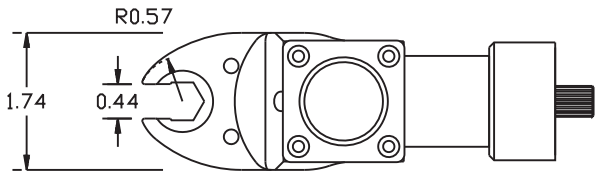
2500 WILLIAMS DRIVE • WATERFORD, MI • 48328

PHONE : (248) 334-2112 • FAX : (248) 334-0062

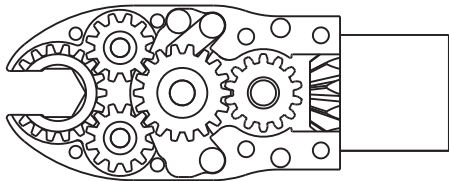
SIDE VIEW



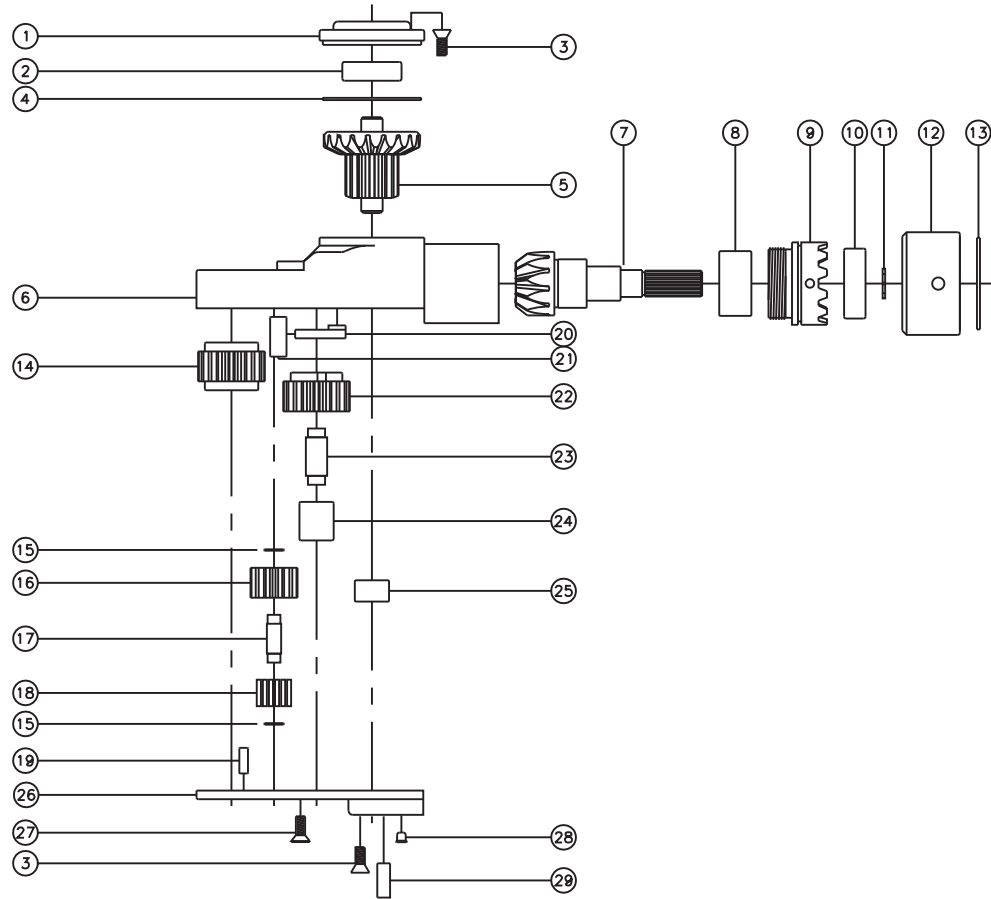
TOP VIEW



GEAR ASSEMBLY



PARTS BLOWOUT



ITEM	DESCRIPTION	PART NO.	ITEM	DESCRIPTION	PART NO.	ITEM	DESCRIPTION	PART NO.
1	Cap	BC-661G1B	13	Retaining Ring	RS-121	25	Needle Bearing	M-551
2	Ball Bearing	38KD	14	Socket Gear	201822-1-XX	26	Bottom Plate	TN70P
3	Screw #1 (8)	S-806	15	Thrust Race (4)	W-991-020	27	Screw #2 (2)	S-606
4	Thrust Race	TRA-1423i	16	Idler Gear (2)	201214	28	Grease Fitting	1877
5	Bevel/Drive Gear Assembly	201445BG1	17	Idler Pin (2)	IP-0722	29	Dowel Pin #2 (2)	DP-1208
6	Gear Housing	TN70H	18	Bearing Needles (28)	LR15M98			
7	Bevel Pinion Gear	661P-47ET	19	Dowel Pin #1 (2)	DP-806			
8	Needle Bearing	HK-1812i	20	Pawl	1004-RPS-P			
9	Motor Coupling	MC-47ET	21	Pawl Spring	RSS-0818			
10	Ball Bearing	9100KDD	22	Cam Gear	201818-CR			
11	Snap Ring	51111	23	Cam Pin	IP-5926			
12	Motor Nut	N-47ET	24	Needle Bearing	B-59			