



D & D PRODUCTION INC.®

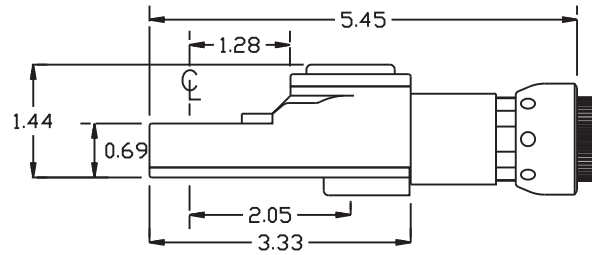
ASSEMBLY NO. TN70 HEAD NO. 193A

TUBE NUT ASS'Y
Rev. A
08-28-07

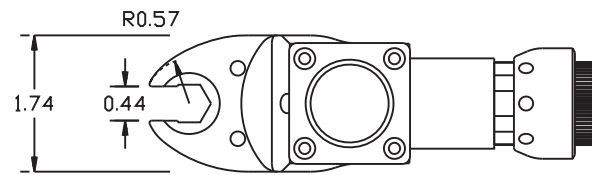
2500 WILLIAMS DRIVE • WATERFORD, MI • 48328

PHONE : (248) 334-2112 • FAX : (248) 334-0062

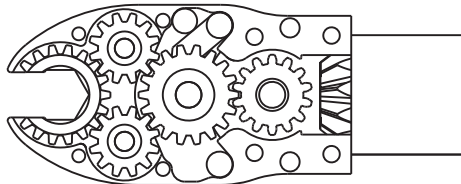
SIDE VIEW



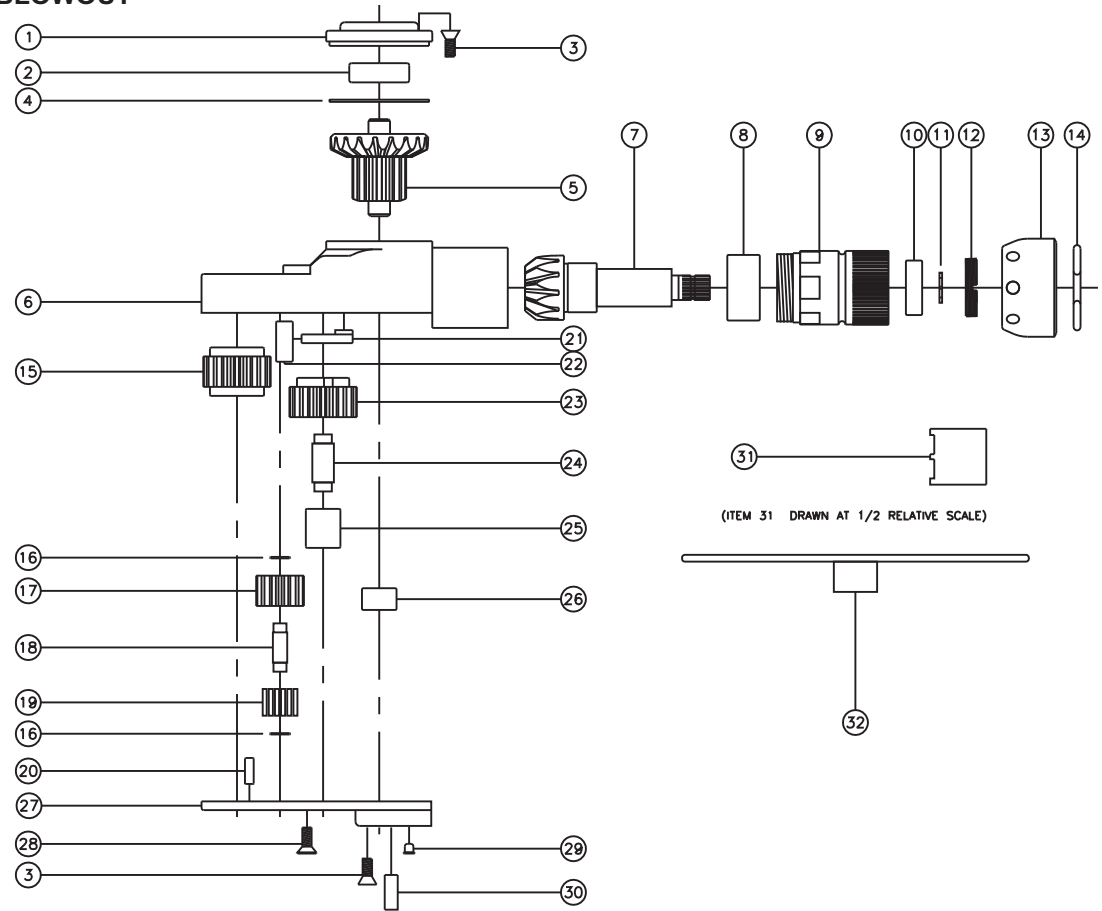
TOP VIEW



GEAR ASSEMBLY



PARTS BLOWOUT



ITEM	DESCRIPTION	PART NO.	ITEM	DESCRIPTION	PART NO.	ITEM	DESCRIPTION	PART NO.
1	Cap	BC-661G1B	13	Motor Nut	N-0841B	25	Needle Bearing	B-59
2	Ball Bearing	38KD	14	Circlip	1021-C	26	Needle Bearing	M-551
3	Screw #1 (8)	S-806	15	Socket Gear	201822-1-XX	27	Bottom Plate	TN70P
4	Thrust Race	TRA-1423i	16	Thrust Race (4)	W-991-020	28	Screw #2 (2)	S-606
5	Bevel/Drive Gear Assembly	201445BG1	17	Idler Gear (2)	201214	29	Grease Fitting	1877
6	Gear Housing	TN70H	18	Idler Pin (2)	IP-0722	30	Dowel Pin #2 (2)	DP-1208
7	Bevel Pinion Gear	661P-10	19	Bearing Needles (28)	LR15M98	31	End Nut Socket (Optional)	ENT-ST61-10
8	Needle Bearing	HK-1812i	20	Dowel Pin #1 (2)	DP-806	32	Motor Coupling Wrench (Optional)	CW-10
9	Motor Coupling	MC-ST61-10	21	Pawl	1004-RPS-P			
10	Ball Bearing	699Zi	22	Pawl Spring	RSS-0818			
11	Snap Ring	51111	23	Cam Gear	201818-CR			
12	End Nut	EN-ST61-10	24	Cam Pin	IP-5926			