



D & D PRODUCTION INC.®

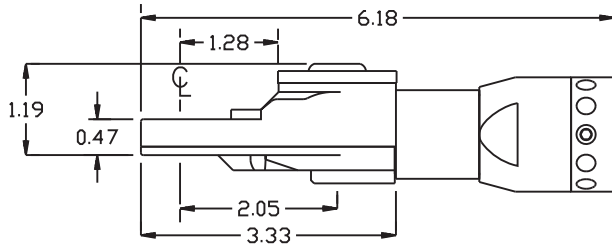
# ASSEMBLY NO. TN70L HEAD NO. 195

TUBE NUT ASS'Y  
Rev. B  
08-27-07

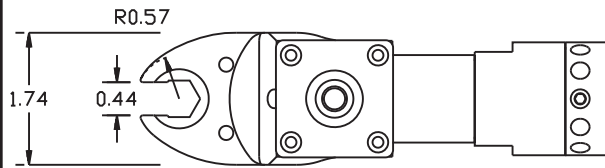
2500 WILLIAMS DRIVE • WATERFORD, MI • 48328

PHONE : (248) 334-2112 • FAX : (248) 334-0062

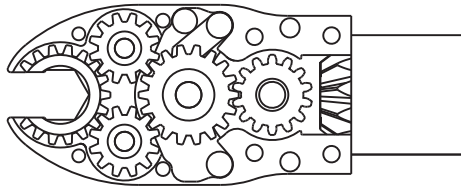
## SIDE VIEW



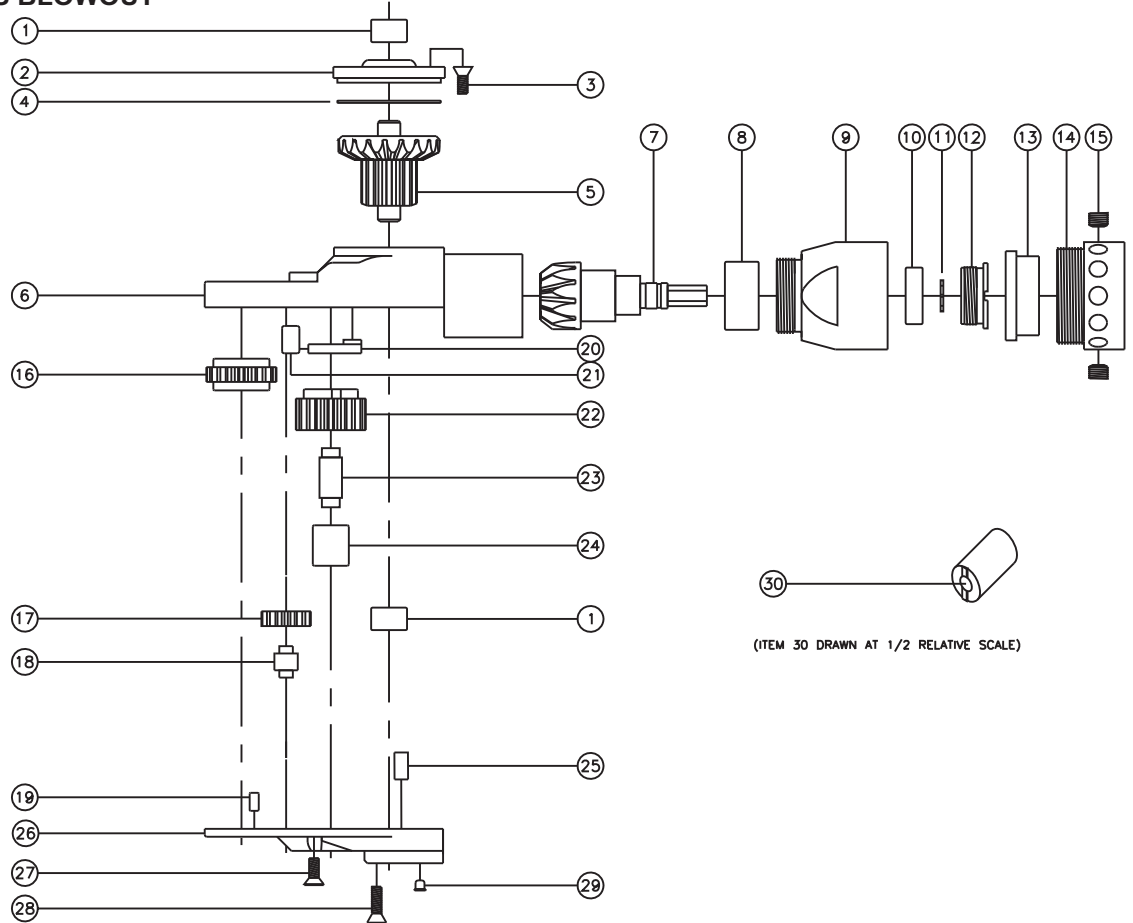
## TOP VIEW



## GEAR ASSEMBLY



## PARTS BLOWOUT



(ITEM 30 DRAWN AT 1/2 RELATIVE SCALE)

ITEM	DESCRIPTION	PART NO.	ITEM	DESCRIPTION	PART NO.	ITEM	DESCRIPTION	PART NO.
1	Needle Bearing (2)	M-551	13	Lock Nut	LN-16038	25	Dowel Pin #2 (2)	DP-1206
2	Cap	BC-661G1	14	Motor Coupling	MC-SD055-1	26	Bottom Plate	TN70LP
3	Screw #1 (4)	S-806	15	Set Screw (2)	SS-1403F	27	Screw #2 (2)	S-606
4	Thrust Race	TRA-1423i	16	Socket Gear	201814-1-XX	28	Screw #3 (4)	S-808
5	Bevel/Drive Gear Assembly	201445G1	17	Idler Gear (2)	201207	29	Grease Fitting	1877
6	Gear Housing	TN70LH	18	Idler Pin (2)	IP-1014	30	End Nut Socket (Optional)	ENT-10
7	Bevel Pinion Gear	661P-M3	19	Dowel Pin #1 (2)	DP-804			
8	Needle Bearing	HK-1812i	20	Pawl	1004-RPS-P			
9	Adapter	MC-SD055-2	21	Pawl Spring	RSS-0812			
10	Ball Bearing	699Zi	22	Cam Gear	201818-CR			
11	Snap Ring	51111	23	Cam Pin	IP-5926			
12	End Nut	EN-0976	24	Needle Bearing	B-59			