



D & D PRODUCTION INC.®

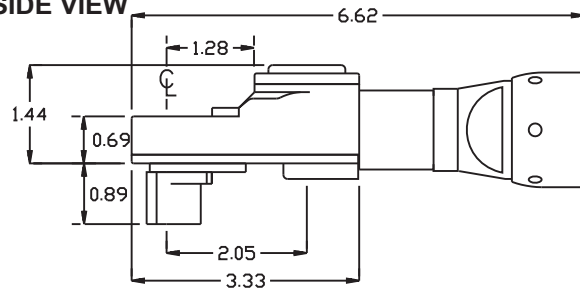
# ASSEMBLY NO. TN70 HEAD NO. 194C

TUBENUT ASS'Y  
Rev. A  
07-09-10

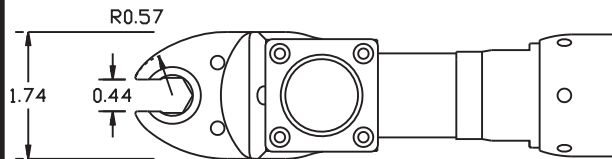
2500 WILLIAMS DRIVE • WATERFORD, MI • 48328

PHONE : (248) 334-2112 • FAX : (248) 334-0062

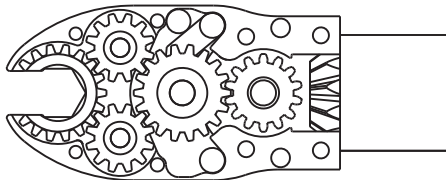
## SIDE VIEW



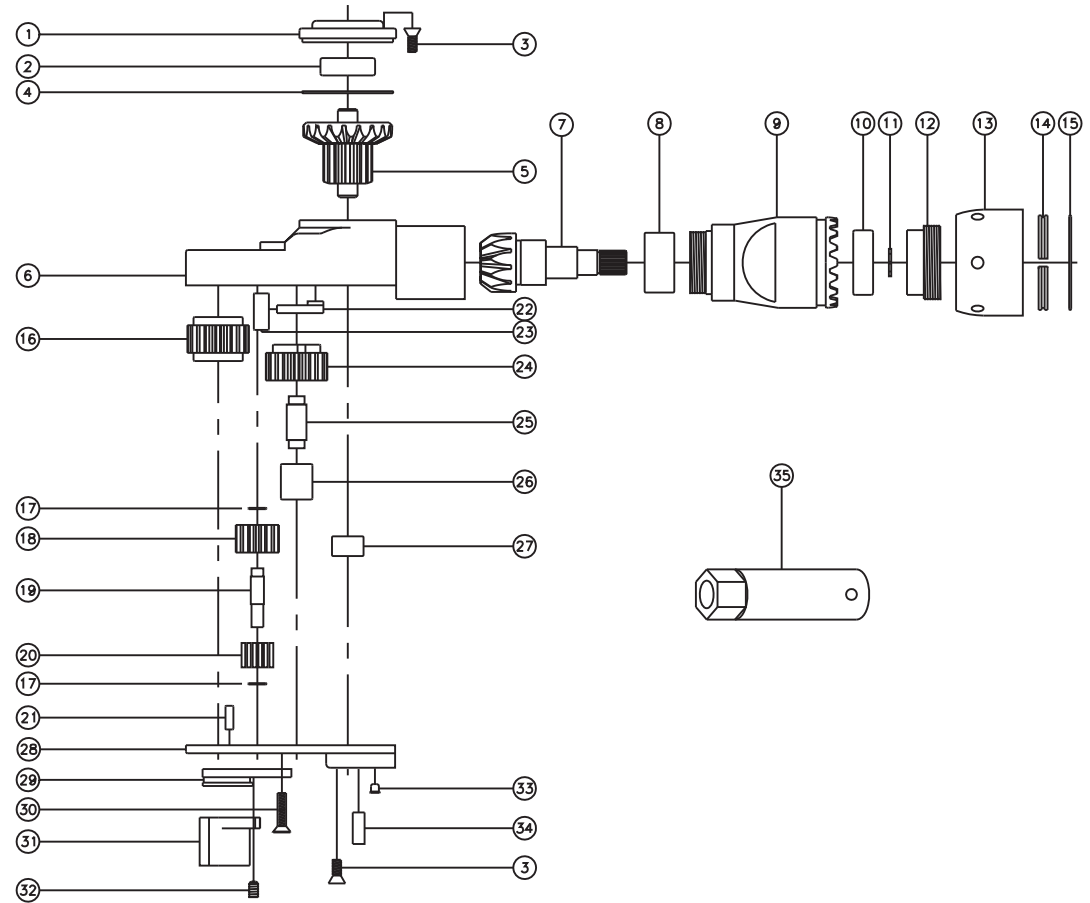
## TOP VIEW



## GEAR ASSEMBLY



## PARTS BLOWOUT



ITEM	DESCRIPTION	PART NO.	ITEM	DESCRIPTION	PART NO.	ITEM	DESCRIPTION	PART NO.
1	Cap	BC-661G1B	13	Motor Nut	N-18EA	25	Cam Pin	IP-5926
2	Ball Bearing	38KD	14	Retaining Ring	R-18EA	26	Needle Bearing	B-59
3	Screw #1 (8)	S-806	15	O-Ring	O-6402V	27	Needle Bearing	M-551
4	Thrust Race	TRA-1423i	16	Socket Gear	201822-1-XX	28	Bottom Plate	TN70P
5	Bevel/Drive Gear Assembly	201445BG1	17	Thrust Race (4)	W-991-020	29	Hold Socket Guide	HD70-A1
6	Gear Housing	TN70H	18	Idler Gear (2)	201214	30	Screw #2 (2)	S-610
7	Bevel Pinion Gear	661P-47BAW	19	Idler Pin (2)	IP-0722-HD2	31	Hold Socket, 13mm	HD66-A2
8	Needle Bearing	HK-1812	20	Bearing Needles (28)	LR15M98	32	Set Screw	SS-604
9	Motor Coupling	MC-47BAW	21	Dowel Pin #1 (2)	DP-806	33	Grease Fitting	1877
10	Ball Bearing	9100KDD	22	Pawl	1004-RPS-P	34	Dowel Pin #2 (2)	DP-1208
11	Snap Ring	51111	23	Pawl Spring	RSS-0818	35	End Nut Tool (Optional)	ENT-18EA
12	Lock Nut	LN-18EA	24	Cam Gear	201818-CR			