



D & D PRODUCTION INC.®

ASSEMBLY NO. TN70

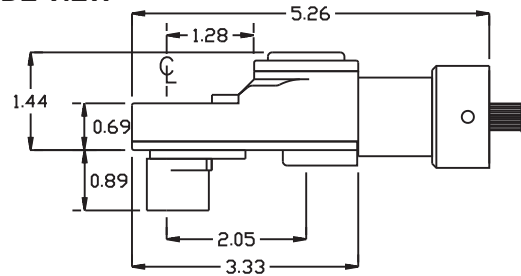
HEAD NO. 194B

TUBENUT ASS'Y
Rev. A
07-09-10

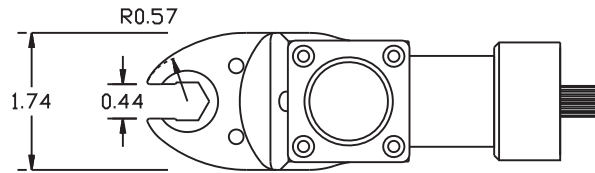
2500 WILLIAMS DRIVE • WATERFORD, MI • 48328

PHONE : (248) 334-2112 • FAX : (248) 334-0062

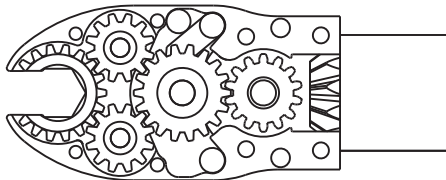
SIDE VIEW



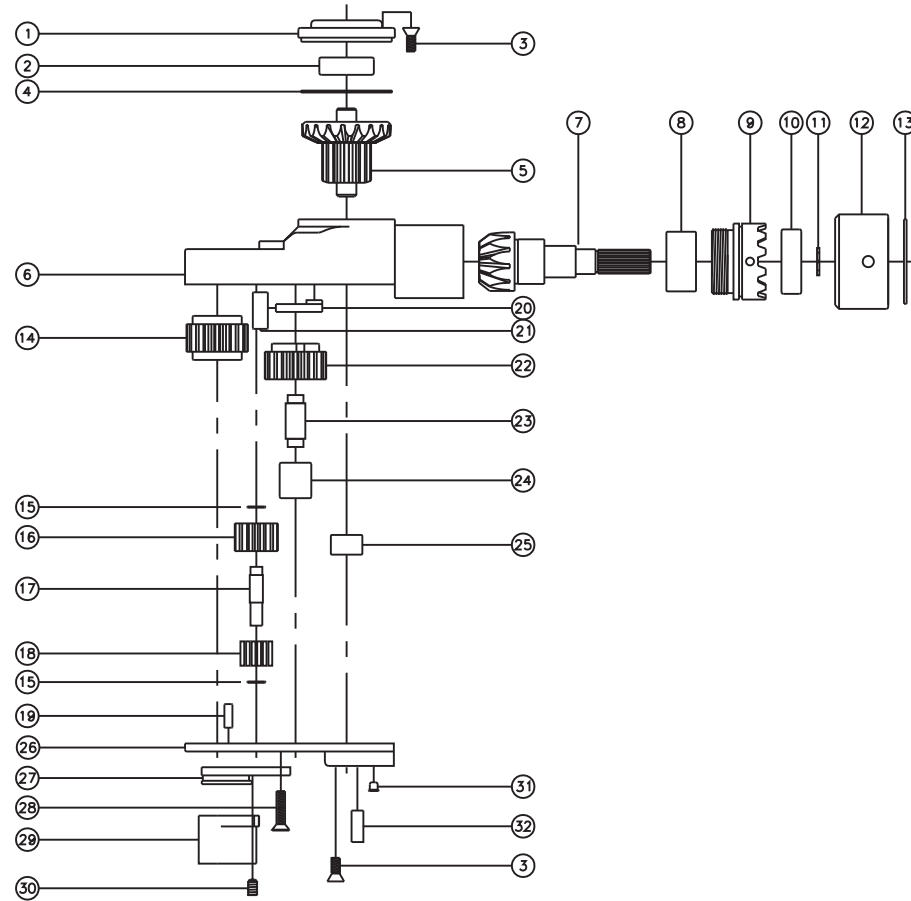
TOP VIEW



GEAR ASSEMBLY



PARTS BLOWOUT



| ITEM | DESCRIPTION | PART NO. | ITEM | DESCRIPTION | PART NO. | ITEM | DESCRIPTION | PART NO. |
|------|---------------------------|-----------|------|----------------------|-------------|------|-------------------|----------|
| 1 | Cap | BC-661G1B | 13 | Retaining Ring | RS-121 | 25 | Needle Bearing | M-551 |
| 2 | Ball Bearing | 38KD | 14 | Socket Gear | 201822-1-XX | 26 | Bottom Plate | TN70P |
| 3 | Screw #1 (8) | S-806 | 15 | Thrust Race (4) | W-991-020 | 27 | Hold Socket Guide | HD70-A1 |
| 4 | Thrust Race | TRA-1423i | 16 | Idler Gear (2) | 201214 | 28 | Screw #2 (2) | S-610 |
| 5 | Bevel/Drive Gear Assembly | 201445BG1 | 17 | Idler Pin (2) | IP-0722-HD2 | 29 | Hold Socket, 15mm | HD70-A2 |
| 6 | Gear Housing | TN70H | 18 | Bearing Needles (28) | LR15M98 | 30 | Set Screw | SS-604 |
| 7 | Bevel Pinion Gear | 661P-47ET | 19 | Dowel Pin #1 (2) | DP-806 | 31 | Grease Fitting | 1877 |
| 8 | Needle Bearing | HK-1812i | 20 | Pawl | 1004-RPS-P | 32 | Dowel Pin #2 (2) | DP-1208 |
| 9 | Motor Coupling | MC-47ET | 21 | Pawl Spring | RSS-0818 | | | |
| 10 | Ball Bearing | 9100KDD | 22 | Cam Gear | 201818-CR | | | |
| 11 | Snap Ring | 51111 | 23 | Cam Pin | IP-5926 | | | |
| 12 | Motor Nut | N-47ET | 24 | Needle Bearing | B-59 | | | |