



D & D PRODUCTION INC.®

ASSEMBLY NO. TN66 HEAD NO. 186

FOR ATLAS COPCO LT028 SR013 MOTOR

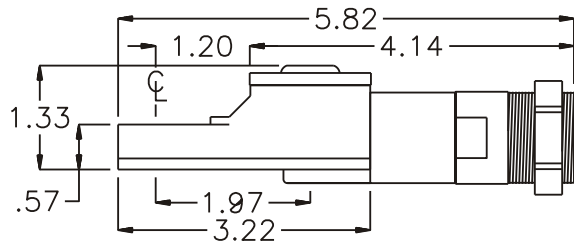
TUBE NUT ASS'Y
Rev. A
09-09-02

2500 WILLIAMS DRIVE • WATERFORD, MI • 48328

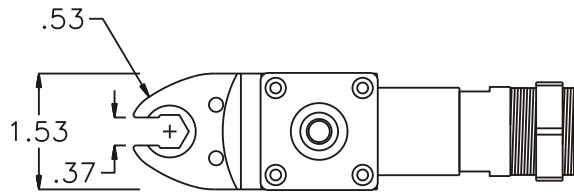
PHONE : (248) 334-2112 •

FAX : (248) 334-0062

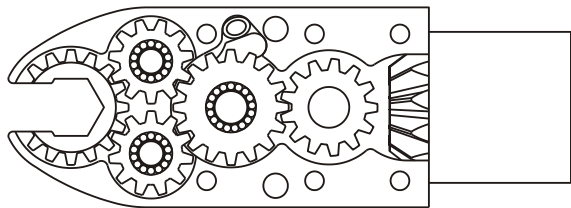
SIDE VIEW



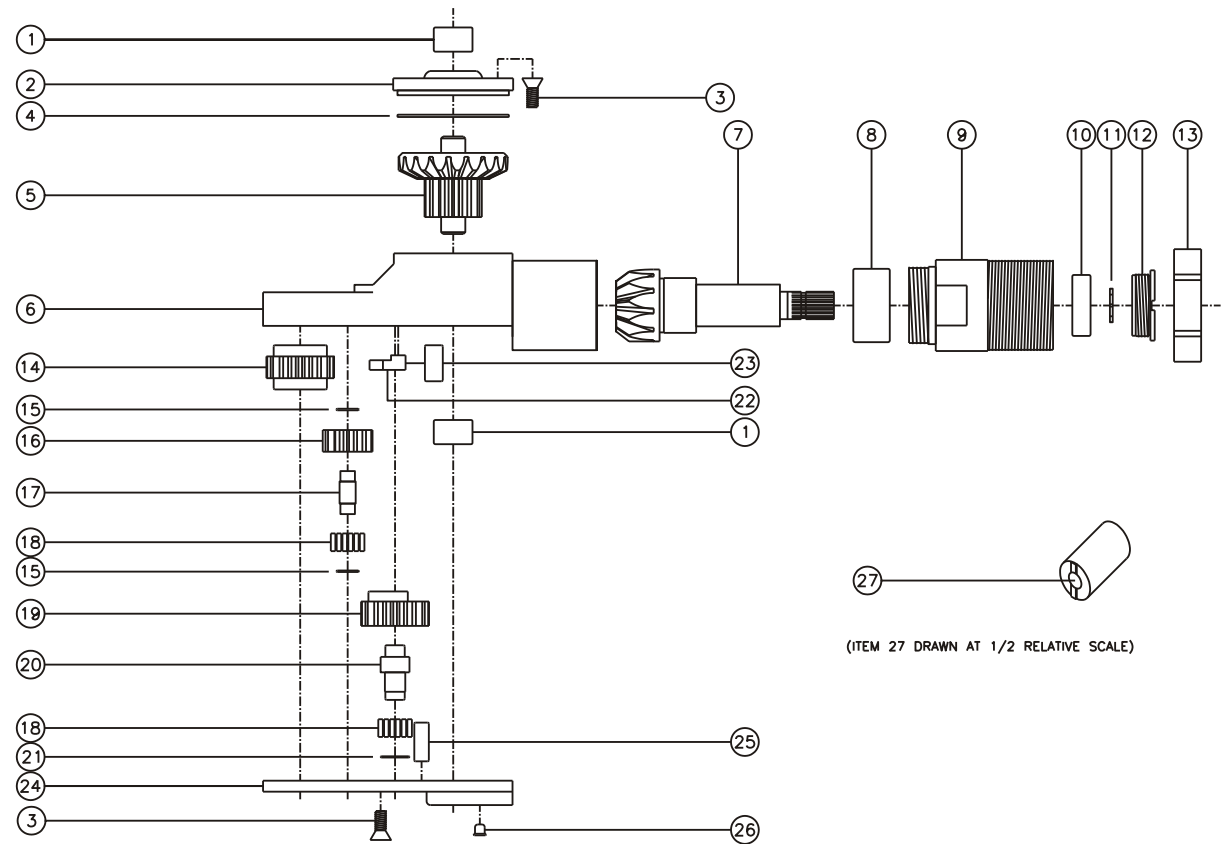
TOP VIEW



GEAR ASSEMBLY



PARTS BLOWOUT



(ITEM 27 DRAWN AT 1/2 RELATIVE SCALE)

ITEM	DESCRIPTION	PART NO.	ITEM	DESCRIPTION	PART NO.	ITEM	DESCRIPTION	PART NO.
1	Needle Bearing (2)	M-551	11	Snap Ring	51111	21	Thrust Race	W-1390-016i
2	Cap	BC-661G1	12	End Nut	EN-0976B	22	Pawl	8225i-P
3	Screw (10)	S-806	13	Motor Nut	N-30M1LH11	23	Pawl Spring	RS-0815i
4	Thrust Race	TRA-1423i	14	Socket Gear	201618i-1-XX	24	Bottom Cover	TN66P
5	Bevel/Drive Gear Assembly	201340G1	15	Thrust Race (4)	W-991-020i	25	Dowel Pin (2)	DP-1208
6	Gear Housing	TN66H	16	Idler Gear (2)	201109i	26	Grease Fitting	1877
7	Bevel Pinion Gear	661P-10D	17	Idler Pin (2)	IP-0718i	27	End Nut Socket (Optional)	ENT-10
8	Needle Bearing	HK-1812i	18	Bearing Needles (45)	LR15M58i			
9	Motor Coupling	MC-28B	19	Cam Gear	201614i-CR			
10	Ball Bearing	699Zi	20	Cam Pin	IP-0821i			