



D & D PRODUCTION INC.®

# ASSEMBLY NO. TN66 HEAD NO. 185

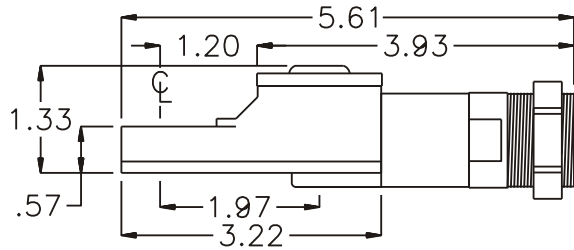
FOR ATLAS COPCO LT028 SR005 MOTOR

TUBE NUT ASS'Y  
Rev. A  
09-06-02

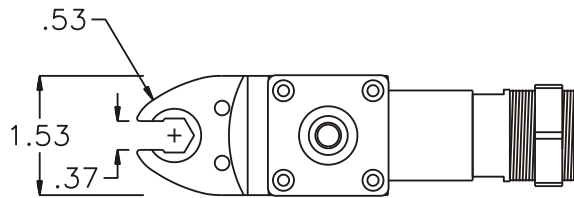
2500 WILLIAMS DRIVE • WATERFORD, MI • 48328

PHONE : (248) 334-2112 • FAX : (248) 334-0062

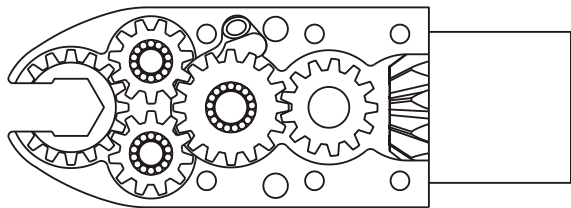
## SIDE VIEW



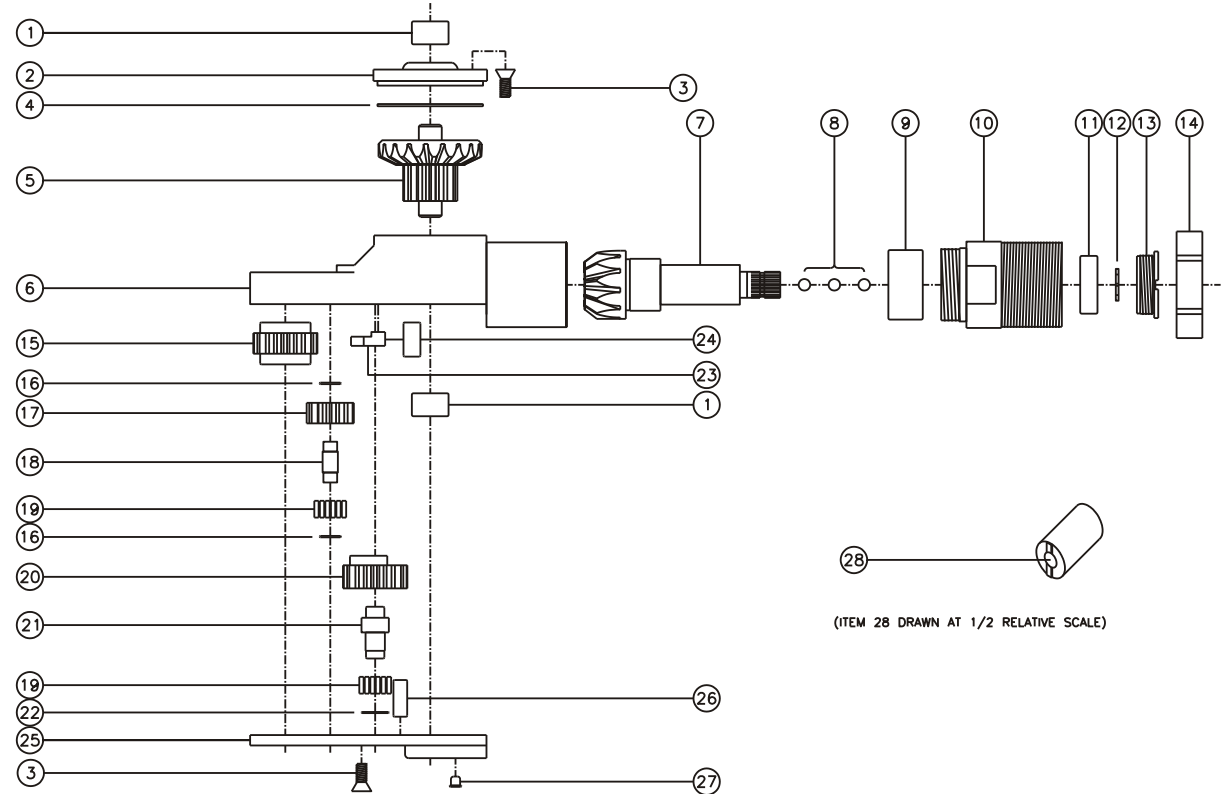
## TOP VIEW



## GEAR ASSEMBLY



## PARTS BLOWOUT



(ITEM 28 DRAWN AT 1/2 RELATIVE SCALE)

ITEM	DESCRIPTION	PART NO.	ITEM	DESCRIPTION	PART NO.	ITEM	DESCRIPTION	PART NO.
1	Needle Bearing (2)	M-551	11	Ball Bearing	699Zi	21	Cam Pin	IP-0821i
2	Cap	BC-661G1	12	Snap Ring	51111	22	Thrust Race	W-1390-016i
3	Screw (10)	S-806	13	End Nut	EN-0976B	23	Pawl	8225i-P
4	Thrust Race	TRA-1423i	14	Motor Nut	N-30M1LH11	24	Pawl Spring	RS-0815i
5	Bevel/Drive Gear Assembly	201340G1	15	Socket Gear	201618i-1-XX	25	Bottom Cover	TN66P
6	Gear Housing	TN66H	16	Thrust Race (4)	W-991-020i	26	Dowel Pin (2)	DP-1208
7	Bevel Pinion Gear	661P-10C	17	Idler Gear (2)	201109i	27	Grease Fitting	1877
8	Ball Bearing (3)	LB-4M	18	Idler Pin (2)	IP-0718i	28	End Nut Socket (Optional)	ENT-10
9	Needle Bearing	HK-1812i	19	Bearing Needles (45)	LR15M58i			
10	Motor Coupling	MC-28	20	Cam Gear	201614i-CR			