



D & D PRODUCTION INC.

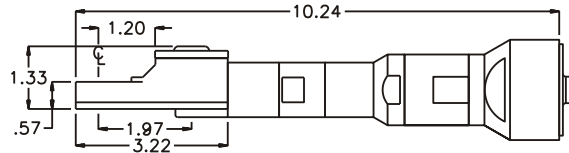
ASSEMBLY NO. TN66 HEAD NO. 184

TUBE NUT ASS'Y
Rev. A
04-10-02

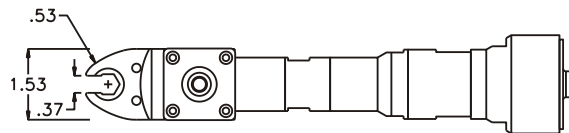
2500 WILLIAMS DRIVE • WATERFORD, MI • 48328

PHONE : (248) 334-2112 • FAX : (248) 334-0062

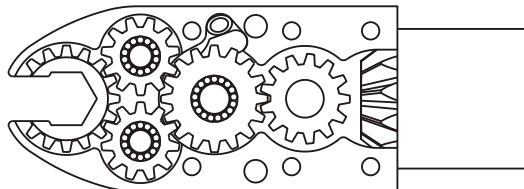
SIDE VIEW



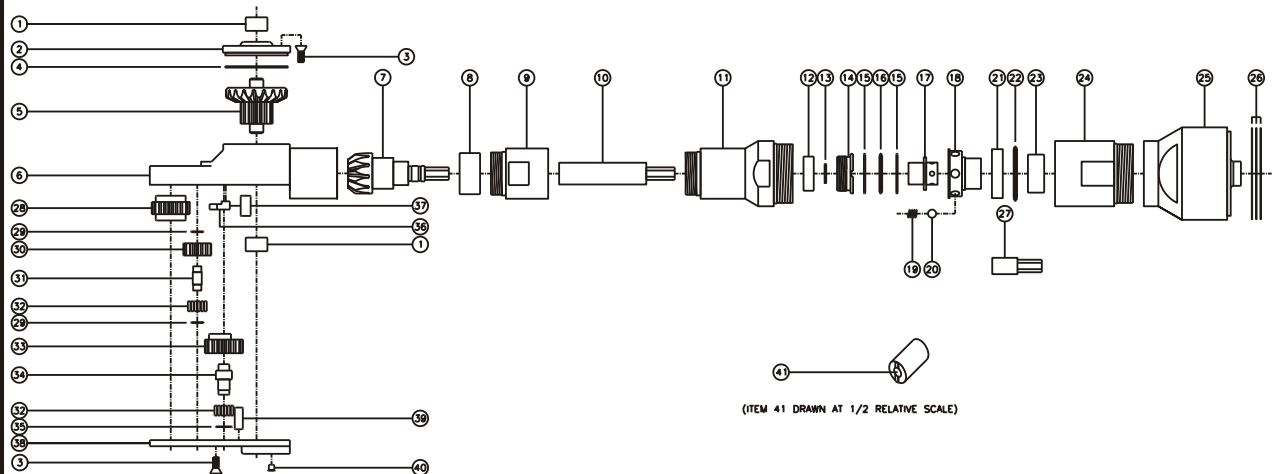
TOP VIEW



GEAR ASSEMBLY



PARTS BLOWOUT



ITEM	DESCRIPTION	PART NO.	ITEM	DESCRIPTION	PART NO.	ITEM	DESCRIPTION	PART NO.
1	Needle Bearing (2)	M-551	15	Thrust Race (2)	TRA-815i	29	Thrust Race (4)	W-991-020i
2	Cap	BC-661G1	16	Thrust Bearing	NTA-815i	30	Idler Gear (2)	201109i
3	Screw (10)	S-806	17	Drive Shaft	DS-04H1622i	31	Idler Pin (2)	IP-0718i
4	Thrust Race	TRA-1423i	18	Rotor	RA10A	32	Bearing Needles (45)	LR15M58i
5	Bevel/Drive Gear Assembly	201340G1	19	Spring (6)	CS-0608	33	Cam Gear	201614i-CR
6	Gear Housing	TN66H	20	Ball Bearing (6)	LB-10	34	Cam Pin	IP-0821i
7	Bevel Pinion Gear	661P-M2	21	Retaining Ring	RR10	35	Thrust Race	W-1390-016i
8	Needle Bearing	HK-1812i	22	Thrust Bearing	NTA-1220	36	Pawl	8225i-P
9	Motor Coupling	MC-2231-CT110	23	Needle Bearing	B-116	37	Pawl Spring	RS-0815i
10	Drive Shaft	DS-041685	24	Upper Clutch Housing (Bottom)	CTA10-ETB6-A	38	Bottom Cover	TN66P
11	Clutch Adapter	CTIA10-2454	25	Upper Clutch Housing (Top)	CTA10-ETB6-B	39	Dowel Pin (2)	DP-1208
12	Ball Bearing	699Zi	26	Orientation Shim Set	W-6762-005-11	40	Grease Fitting	1877
13	Snap Ring	51111	27	Drive Spindle	DB-04H06S	41	End Nut Socket (Optional)	ENT-10
14	End Nut	EN-0976	28	Socket Gear	201618i-1-XX			