



D & D PRODUCTION INC.

ASSEMBLY NO. TN66

HEAD NO. 182

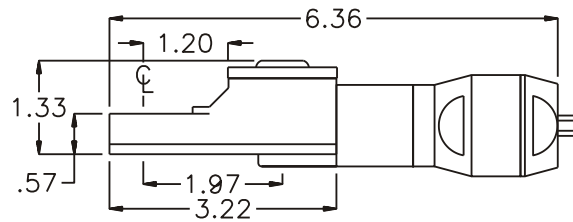
FOR IR 3RLMC1 MOTOR

TUBE NUT ASS'Y
Rev. A
12-06-01

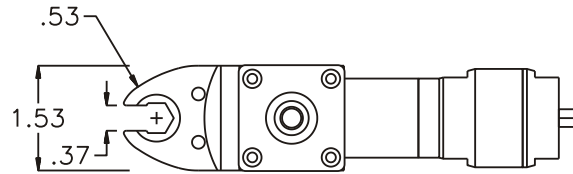
2500 WILLIAMS DRIVE • WATERFORD, MI • 48328

PHONE : (248) 334-2112 • FAX : (248) 334-0062

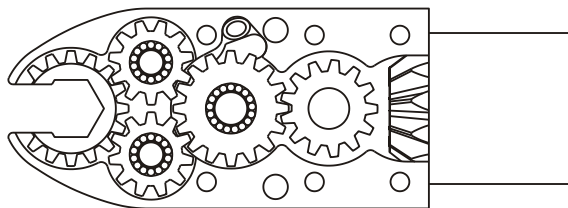
SIDE VIEW



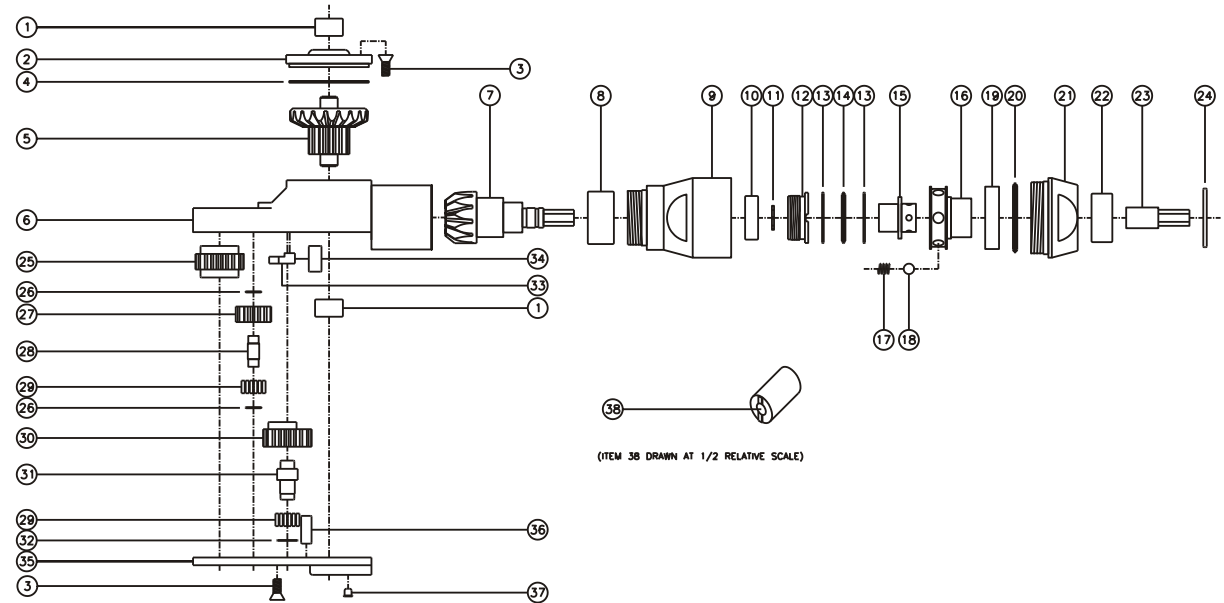
TOP VIEW



GEAR ASSEMBLY



PARTS BLOWOUT



(ITEM 38 DRAWN AT 1/2 RELATIVE SCALE)

ITEM	DESCRIPTION	PART NO.	ITEM	DESCRIPTION	PART NO.	ITEM	DESCRIPTION	PART NO.
1	Needle Bearing (2)	M-551	14	Thrust Bearing	NTA-815i	27	Idler Gear (2)	201109i
2	Cap	BC-661G1	15	Drive Shaft	DS-04H1622i	28	Idler Pin (2)	IP-0718i
3	Screw (10)	S-806	16	Rotor	RA10Ai	29	Bearing Needles (45)	LR15M58i
4	Thrust Race	TRA-1423i	17	Spring (6)	CS-0608i	30	Cam Gear	201614i-CR
5	Bevel/Drive Gear Assembly	201340G1	18	Ball Bearing (6)	LB-10i	31	Cam Pin	IP-0821i
6	Gear Housing	TN66H	19	Retaining Ring	RR10i	32	Thrust Race	W-1390-016i
7	Bevel Pinion Gear	661P-M2	20	Thrust Bearing	NTA-1220i	33	Pawl	8225i-P
8	Needle Bearing	HK-1812i	21	Motor Coupling (Rear)	CTI10A-NC1-MC	34	Pawl Spring	RS-0815i
9	Motor Coupling (Front)	CTI10A-H	22	Needle Bearing	B-116i	35	Bottom Cover	TN66P
10	Ball Bearing	699Zi	23	Drive Bit	DB-04H06Si	36	Dowel Pin (2)	DP-1208
11	Snap Ring	51111	24	Thrust Race	TRB-613i	37	Grease Fitting	1877
12	End Nut	EN-0976	25	Socket Gear	201618i-1-XX	38	End Nut Socket (Optional)	ENT-10
13	Thrust Race (2)	TRA-815i	26	Thrust Race (4)	W-991-020i			