



D & D PRODUCTION INC.

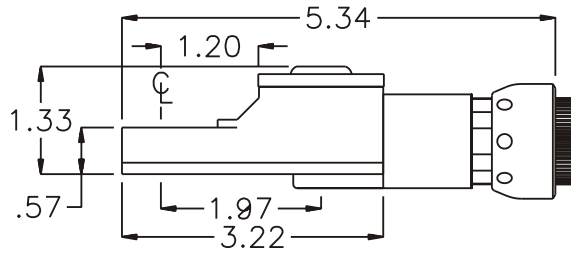
ASSEMBLY NO. TN66 HEAD NO. 181

TUBE NUT ASS'Y
Rev. B
12-06-01

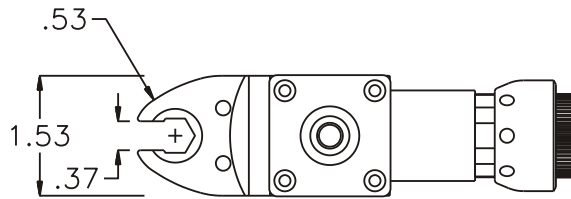
2500 WILLIAMS DRIVE • WATERFORD, MI • 48328

PHONE : (248) 334-2112 • FAX : (248) 334-0062

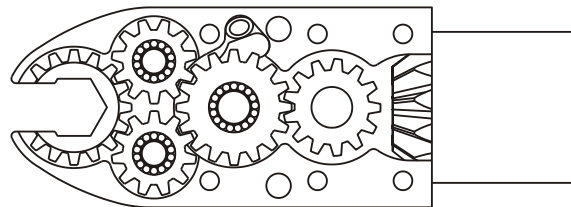
SIDE VIEW



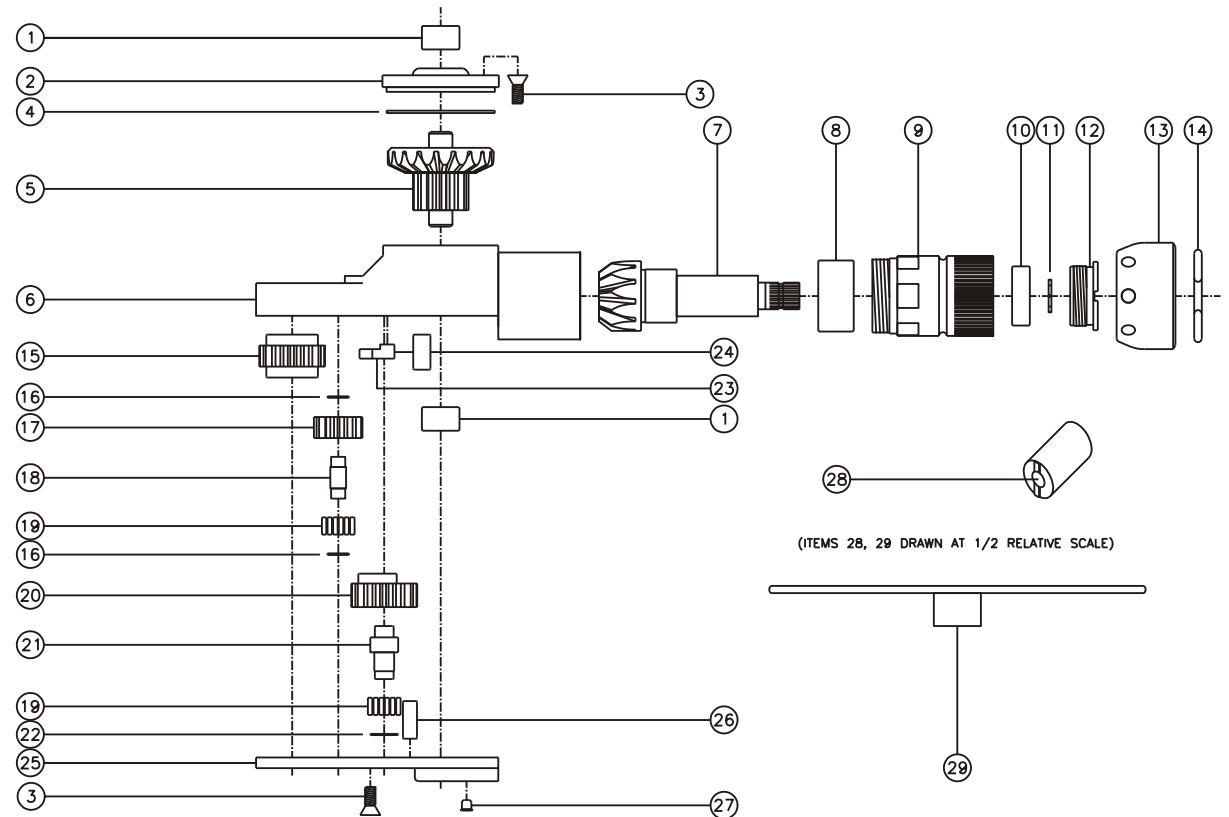
TOP VIEW



GEAR ASSEMBLY



PARTS BLOWOUT



(ITEMS 28, 29 DRAWN AT 1/2 RELATIVE SCALE)

ITEM	DESCRIPTION	PART NO.	ITEM	DESCRIPTION	PART NO.	ITEM	DESCRIPTION	PART NO.
1	Needle Bearing (2)	M-551	11	Snap Ring	51111	21	Cam Pin	IP-0821i
2	Cap	BC-661G1	12	End Nut	EN-0976	22	Thrust Race	W-1390-016i
3	Screw (10)	S-806	13	Motor Nut	N-0841	23	Pawl	8225i-P
4	Thrust Race	TRA-1423i	14	Circlip	1021-C	24	Pawl Spring	RS-0815i
5	Bevel/Drive Gear Assembly	201340G1	15	Socket Gear	201618i-1-XX	25	Bottom Cover	TN66P
6	Gear Housing	TN66H	16	Thrust Race (4)	W-991-020i	26	Dowel Pin (2)	DP-1208
7	Bevel Pinion Gear	661P-10	17	Idler Gear (2)	201109i	27	Grease Fitting	1877
8	Needle Bearing	HK-1812i	18	Idler Pin (2)	IP-0718i	28	End Nut Socket (Optional)	ENT-10
9	Motor Coupling	MC-10	19	Bearing Needles (45)	LR15M58i	29	Motor Coupling Wrench (Optional)	CW-10
10	Ball Bearing	699Zi	20	Cam Gear	201614i-CR			