



D & D PRODUCTION INC.®

ASSEMBLY NO. TN66 HEAD NO. 179

TUBE NUT ASS'Y
Rev. A
01-15-03

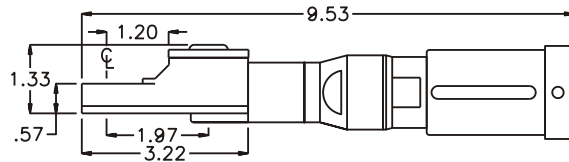
FOR ATLAS COPCO LUM25 HRX 03-U MOTOR

2500 WILLIAMS DRIVE • WATERFORD, MI • 48328

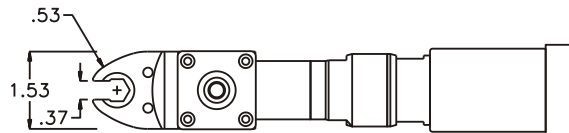
PHONE : (248) 334-2112 •

FAX : (248) 334-0062

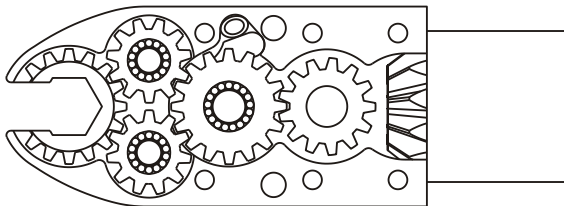
SIDE VIEW



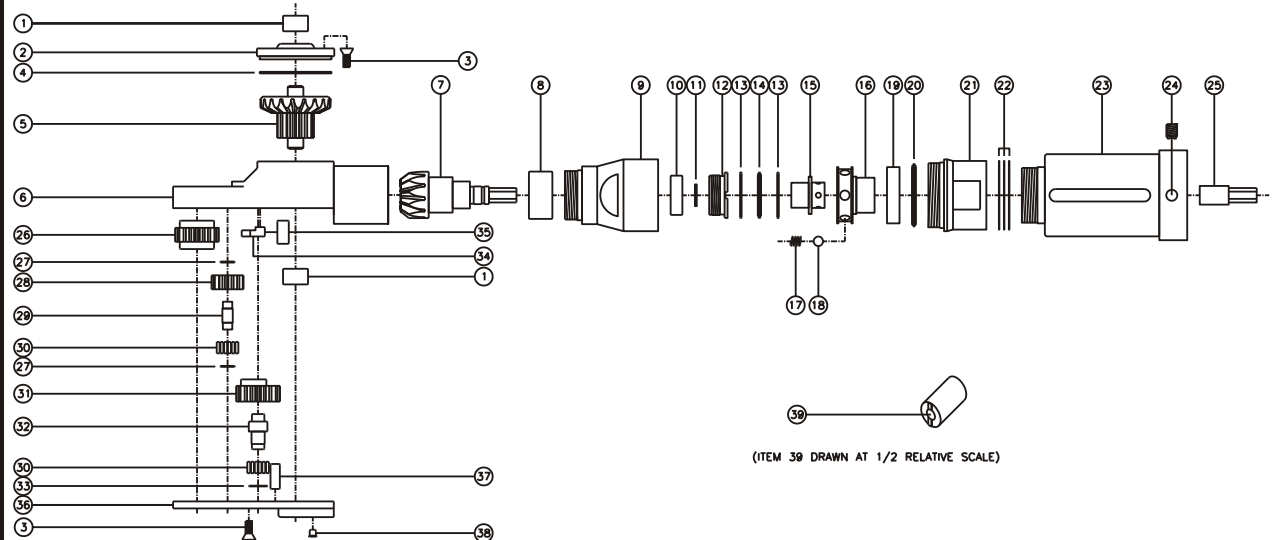
TOP VIEW



GEAR ASSEMBLY



PARTS BLOWOUT



ITEM	DESCRIPTION	PART NO.	ITEM	DESCRIPTION	PART NO.	ITEM	DESCRIPTION	PART NO.
1	Needle Bearing (2)	M-551	14	Thrust Bearing	NTA-815i	27	Thrust Race (4)	W-991-020i
2	Cap	BC-661G1	15	Drive Shaft	DS-04H1622i	28	Idler Gear (2)	201109i
3	Screw (10)	S-806	16	Rotor	RA10Ai	29	Idler Pin (2)	IP-0718i
4	Thrust Race	TRA-1423i	17	Spring (6)	CS-0608i	30	Bearing Needles (45)	LR15M58i
5	Bevel/Drive Gear Assembly	201340G1	18	Ball Bearing (6)	LB-10i	31	Cam Gear	201614i-CR
6	Gear Housing	TN66H	19	Retaining Ring	RR10i	32	Cam Pin	IP-0821i
7	Bevel Pinion Gear	661P-M2	20	Thrust Bearing	NTA-1220i	33	Thrust Race	W-1390-016i
8	Needle Bearing	HK-1812i	21	Upper Clutch Housing	CTI10-A25	34	Pawl	8225i-P
9	Lower Clutch Housing	CTI10A-H	22	Shim Set	W-32N	35	Pawl Spring	RS-0815i
10	Ball Bearing	699Zi	23	Motor Coupling	MC-A25	36	Bottom Cover	TN66P
11	Snap Ring	51111	24	Set Screw (2)	SS-1404F	37	Dowel Pin (2)	DP-1208
12	End Nut	EN-0976	25	Drive Bit	DB-04H06Si	38	Grease Fitting	1877
13	Thrust Race (2)	TRA-815i	26	Socket Gear	201618i-1-XX	39	End Nut Socket (Optional)	ENT-10