

D & D PRODUCTION INC.®

# ASSEMBLY NO. TN128 HEAD NO. 254

FOR TECHMOTIVE T066I045SSP3 MOTOR

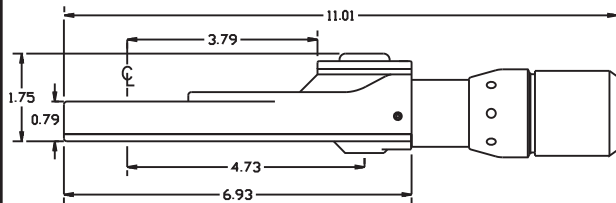
TUBE NUT ASS'Y  
Rev. B  
06-25-08

2500 WILLIAMS DRIVE • WATERFORD, MI • 48328

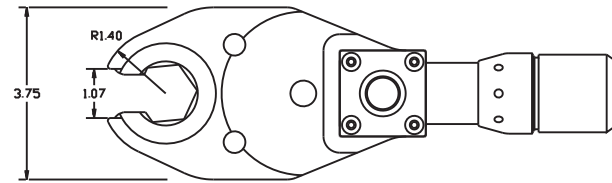
PHONE : (248) 334-2112 •

FAX : (248) 334-0062

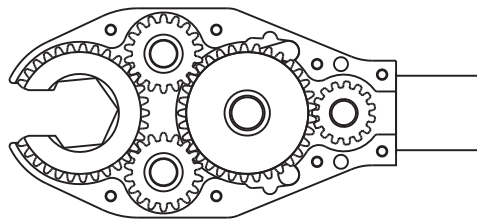
## SIDE VIEW



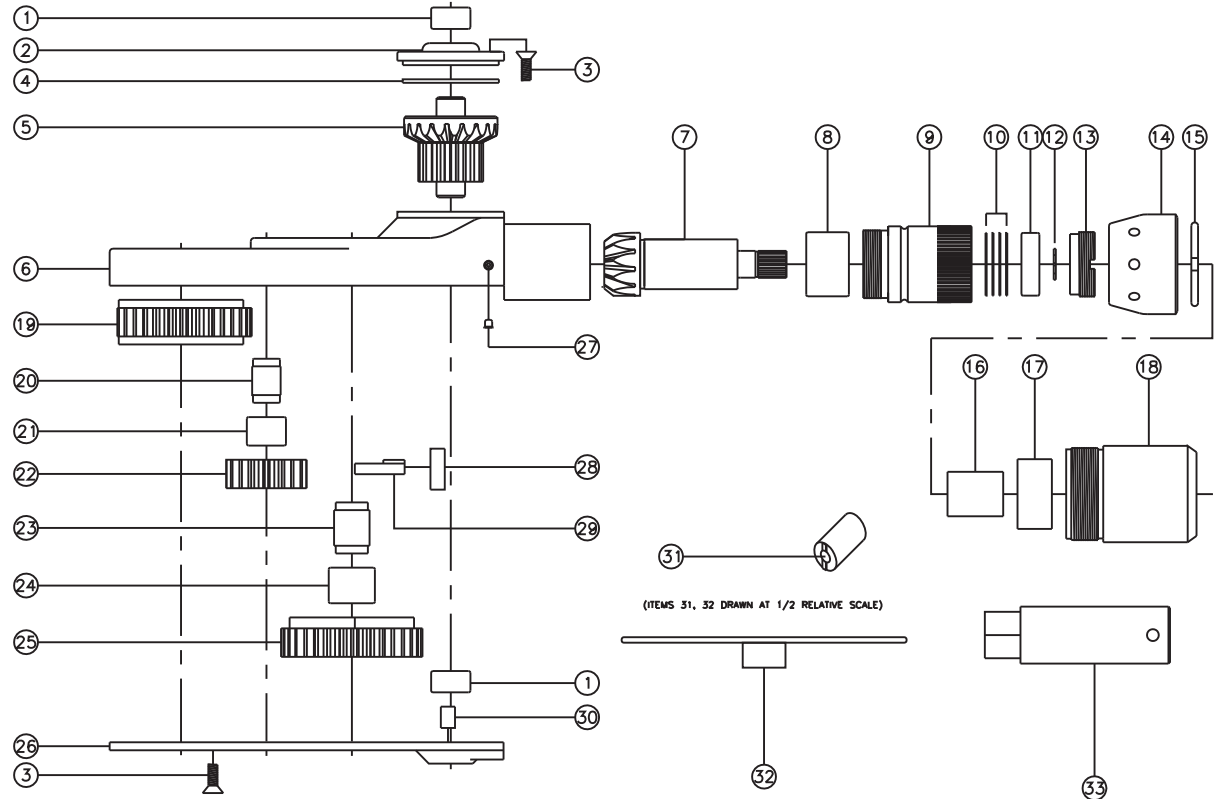
## TOP VIEW



## GEAR ASSEMBLY



## PARTS BLOWOUT



(ITEMS 31, 32 DRAWN AT 1/2 RELATIVE SCALE)

ITEM	DESCRIPTION	PART NO.	ITEM	DESCRIPTION	PART NO.	ITEM	DESCRIPTION	PART NO.
1	Needle Bearing (2)	M-861	14	Motor Nut	N-0848	27	Grease Fitting	1877
2	Cap	BC-662G1	15	Circlip	0849-C	28	Pawl Spring	RSS-0823
3	Screw (10)	S-1008	16	Drive Shaft	DS-S38F2531	29	Pawl	1106-PS-P
4	Thrust Race	TRB-1427	17	Lock Nut	LN-6645-B	30	Dowel Pin (2)	DP-1606
5	Bevel/Drive Gear Assembly	141556G1	18	Motor Coupling	MC-6645-B	31	End Nut Socket (Optional)	ENT-ETV13
6	Gear Housing	TN128H2	19	Socket Gear	143325-1-XX	32	Adapter Wrench (Optional)	CW-ETV13
7	Bevel Pinion Gear	662P-ETV13	20	Idler Pin (2)	IP-8825	33	Lock Nut Socket (Optional)	ENT-66B
8	Needle Bearing	B-1412	21	Needle Bearing (2)	B-88			
9	Adapter	MC662-ETV13	22	Idler Gear (2)	141816			
10	Shim Set	W-AM3-5-4	23	Cam Pin	CP-101031			
11	Ball Bearing	6001	24	Needle Bearing	B-1010			
12	Snap Ring	51114	25	Cam Gear	143322-C			
13	End Nut	EN-0874	26	Bottom Cover	TN128P			