

D & D PRODUCTION INC.®

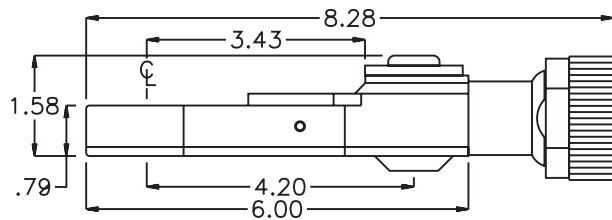
ASSEMBLY NO. TN110M HEAD NO. 232M

TUBE NUT ASS'Y
Rev. A
02-06-07

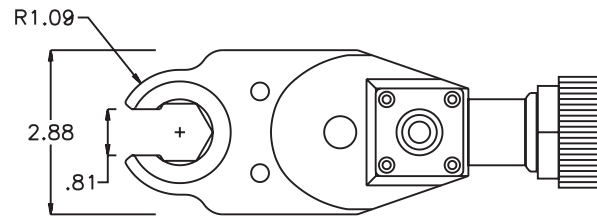
2500 WILLIAMS DRIVE • WATERFORD, MI • 48328

PHONE : (248) 334-2112 • FAX : (248) 334-0062

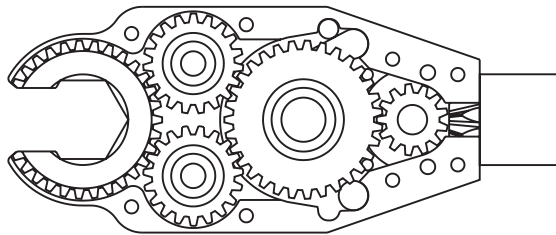
SIDE VIEW



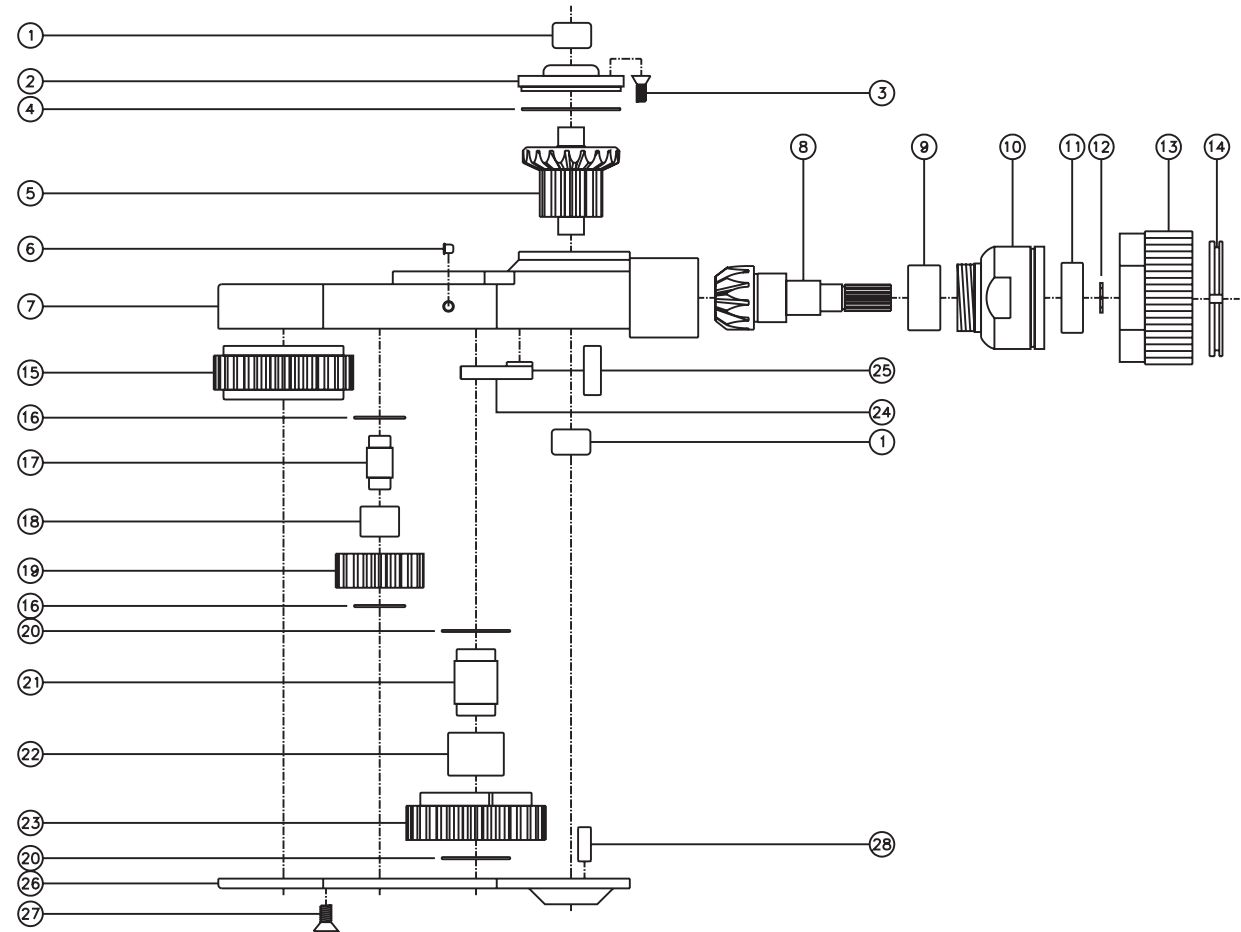
TOP VIEW



GEAR ASSEMBLY



PARTS BLOWOUT



ITEM	DESCRIPTION	PART NO.	ITEM	DESCRIPTION	PART NO.	ITEM	DESCRIPTION	PART NO.
1	Needle Bearing (2)	M-661	11	Ball Bearing	9100KDD	21	Cam Pin	IP-101031i
2	Cap	BC-661G2	12	Snap Ring	51111	22	Needle Bearing	B-1010i
3	Screw #1 (4)	S-806	13	End Nut	N-AH4	23	Cam Gear	163122i-C
4	Thrust Race	TRA-1423i	14	Lock Ring	R-AH4	24	Pawl	1406i-PS-P
5	Bevel/Drive Gear Assembly	161350G2	15	Socket Gear	163125i-1-XX	25	Pawl Spring	RSS-0823i
6	Grease Fitting	1877	16	Thrust Race (4)	TRA-512i	26	Bottom Cover	TN110MP
7	Gear Housing	TN110MH	17	Idler Pin (2)	IP-6725i	27	Screw #2 (8)	S-1006
8	Bevel Pinion Gear	661P-AH4	18	Needle Bearing (2)	B-67i	28	Dowel Pin (2)	DP-1208
9	Needle Bearing	HK-1812i	19	Idler Gear (2)	161916i			
10	Motor Coupling	MC-AH4	20	Thrust Race (2)	TRA-916i			