



D & D PRODUCTION INC.

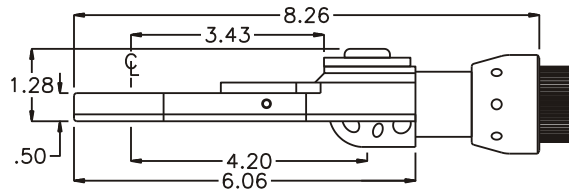
ASSEMBLY NO. TN110L HEAD NO. 235

TUBE NUT ASS'Y
Rev. B
12-06-01

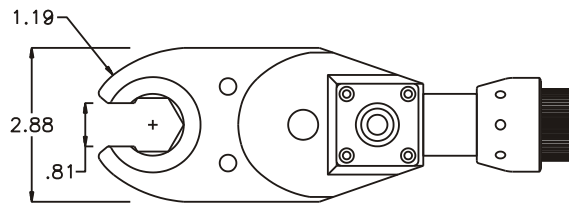
2500 WILLIAMS DRIVE • WATERFORD, MI • 48328

PHONE : (248) 334-2112 • FAX : (248) 334-0062

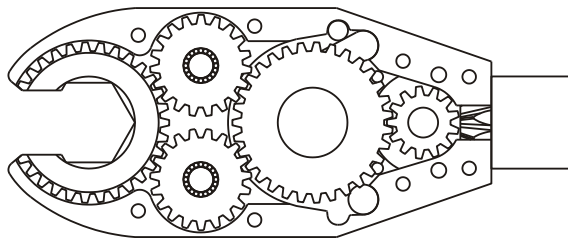
SIDE VIEW



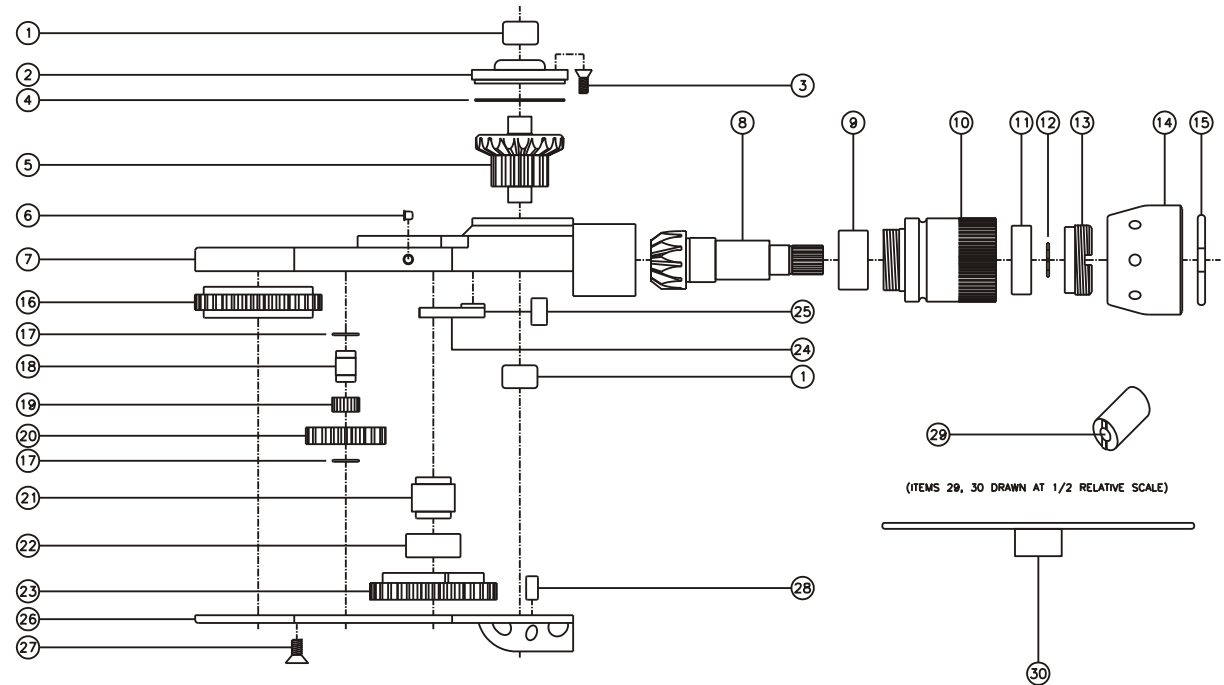
TOP VIEW



GEAR ASSEMBLY



PARTS BLOWOUT



ITEM	DESCRIPTION	PART NO.	ITEM	DESCRIPTION	PART NO.	ITEM	DESCRIPTION	PART NO.
1	Needle Bearing (2)	M-661	13	End Nut	EN-0874	25	Pawl Spring	RSS-0814i
2	Cap	BC-661G2	14	Motor Nut	N-0848	26	Bottom Cover	TN110LP
3	Screw #1 (4)	S-806	15	Circlip	0849-C	27	Screw #2 (8)	S-1006
4	Thrust Race	TRA-1423i	16	Socket Race	163116i-1-XX	28	Dowel Pin (2)	DP-1206
5	Bevel/Drive Gear Assembly	161344G2	17	Thrust Race (4)	TRA-512M	29	End Nut Socket (Optional)	ENT-ETV13
6	Grease Fitting	1877	18	Idler Pin (2)	IP-1016i	30	Motor Coupling Wrench (Optional)	CW-ETV13
7	Gear Housing	TN110LH	19	Bearing Needles (40)	LR15M58i			
8	Bevel Pinion Gear	661P-ETV13	20	Idler Gear (2)	161909i			
9	Needle Bearing	HK-1812i	21	Cam Pin	IP-11621i			
10	Motor Coupling	MC-ETV13	22	Needle Bearing	B-116i			
11	Ball Bearing	6001	23	Cam Gear	163114i-C			
12	Snap Ring	51114	24	Pawl	1405i-PS-P			