

D & D PRODUCTION INC.®

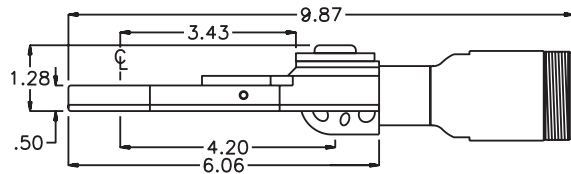
# ASSEMBLY NO. TN110L HEAD NO. 236

TUBE NUT ASS'Y  
Rev. A  
08-08-05

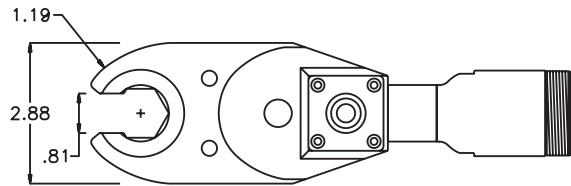
2500 WILLIAMS DRIVE • WATERFORD, MI • 48328

PHONE : (248) 334-2112 • FAX : (248) 334-0062

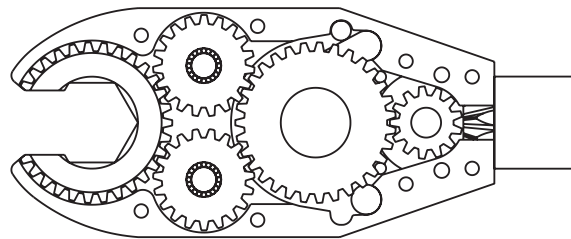
## SIDE VIEW



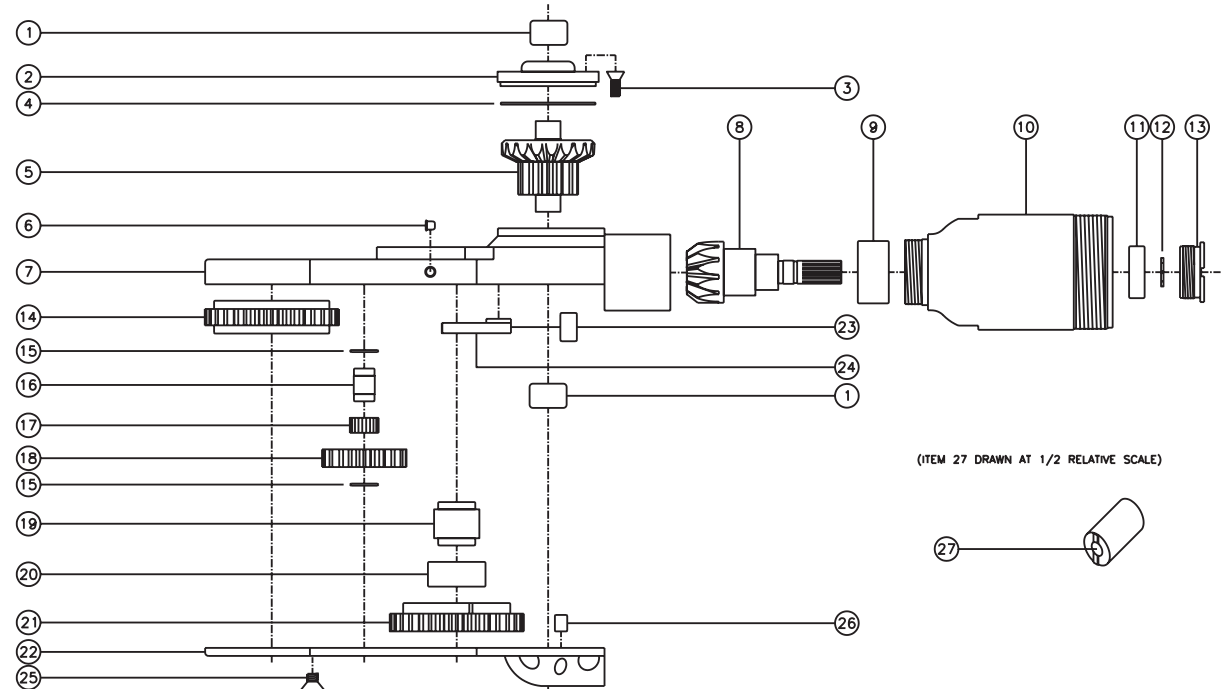
## TOP VIEW



## GEAR ASSEMBLY



## PARTS BLOWOUT



(ITEM 27 DRAWN AT 1/2 RELATIVE SCALE)

ITEM	DESCRIPTION	PART NO.	ITEM	DESCRIPTION	PART NO.	ITEM	DESCRIPTION	PART NO.
1	Needle Bearing (2)	M-661	13	End Nut	EN-0976	25	Screw #2 (8)	S-1004
2	Cap	BC-661G2	14	Socket Gear	163116i-1-XX	26	Dowel Pin (2)	DP-1204
3	Screw #1 (4)	S-806	15	Thrust Race (4)	TRA-512M	27	End Nut Socket (Optional)	ENT-10
4	Thrust Race	TRA-1423i	16	Idler Pin (2)	IP-1016i			
5	Bevel/Drive Gear Assembly	161344G2	17	Bearing Needles (40)	LR15M58i			
6	Grease Fitting	1877	18	Idler Gear (2)	161909i			
7	Gear Housing	TN110LH	19	Cam Pin	IP-11621i			
8	Bevel Pinion Gear	661P-66	20	Needle Bearing	B-116i			
9	Needle Bearing	HK-1812i	21	Cam Gear	163114i-C			
10	Motor Coupling	MC-6645	22	Bottom Cover	TN110LP			
11	Ball Bearing	699Zi	23	Pawl Spring	RSS-0814i			
12	Snap Ring	51111	24	Pawl	1405i-PS-P			