

D & D PRODUCTION INC.®

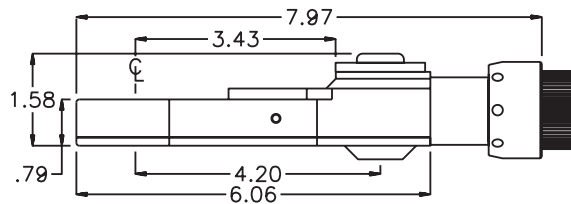
# ASSEMBLY NO. TN110 HEAD NO. 234

TUBE NUT ASS'Y  
Rev. A  
11-29-05

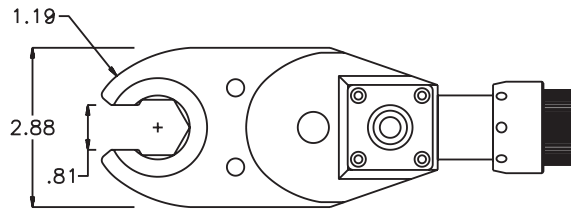
2500 WILLIAMS DRIVE • WATERFORD, MI • 48328

PHONE : (248) 334-2112 • FAX : (248) 334-0062

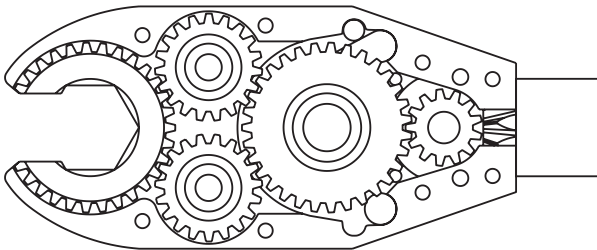
## SIDE VIEW



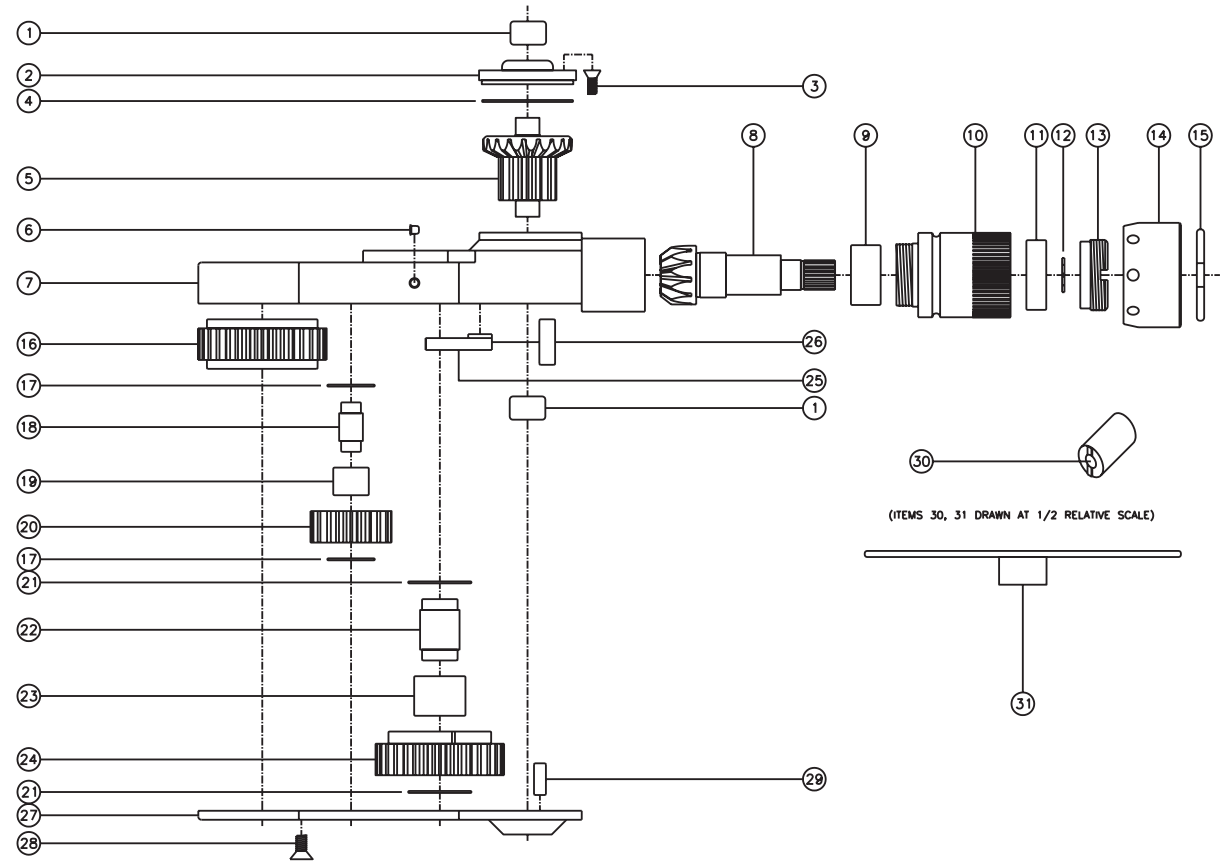
## TOP VIEW



## GEAR ASSEMBLY



## PARTS BLOWOUT



ITEM	DESCRIPTION	PART NO.	ITEM	DESCRIPTION	PART NO.	ITEM	DESCRIPTION	PART NO.
1	Needle Bearing (2)	M-661	13	End Nut	EN-0874	25	Pawl	1406i-PS-P
2	Cap	BC-661G2	14	Motor Nut	N-13ST	26	Pawl Spring	RSS-0823i
3	Screw #1 (4)	S-806	15	Circlip	0849-C	27	Bottom Cover	TN110P
4	Thrust Race	TRA-1423i	16	Socket Race	163125i-1-XX	28	Screw #2 (8)	S-1006
5	Bevel/Drive Gear Assembly	161350G2	17	Thrust Race (4)	TRA-512i	29	Dowel Pin (2)	DP-1208
6	Grease Fitting	1877	18	Idler Pin (2)	IP-6725i	30	End Nut Socket (Optional)	ENT-ETV13
7	Gear Housing	TN110H	19	Needle Bearing (2)	B-67i	31	Motor Coupling Wrench (Optional)	CW-ETV13
8	Bevel Pinion Gear	661P-ETV13	20	Idler Gear (2)	161916i			
9	Needle Bearing	HK-1812i	21	Thrust Race (2)	TRA-916i			
10	Motor Coupling	MC-ETV13	22	Cam Pin	IP-101031i			
11	Ball Bearing	6001	23	Needle Bearing	B-1010i			
12	Snap Ring	51114	24	Cam Gear	163122i-C			