



D & D PRODUCTION INC.

ASSEMBLY NO. TN110

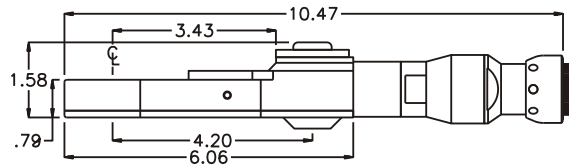
HEAD NO. 233

TUBE NUT ASS'Y
Rev. A
07-16-02

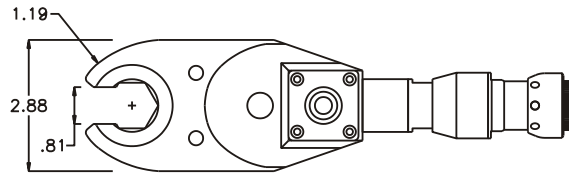
2500 WILLIAMS DRIVE • WATERFORD, MI • 48328

PHONE : (248) 334-2112 • FAX : (248) 334-0062

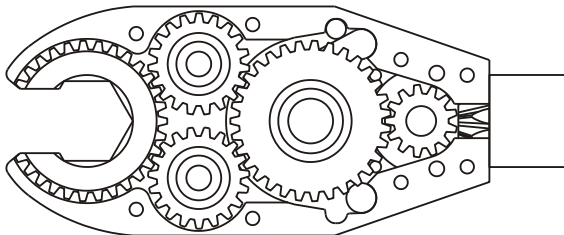
SIDE VIEW



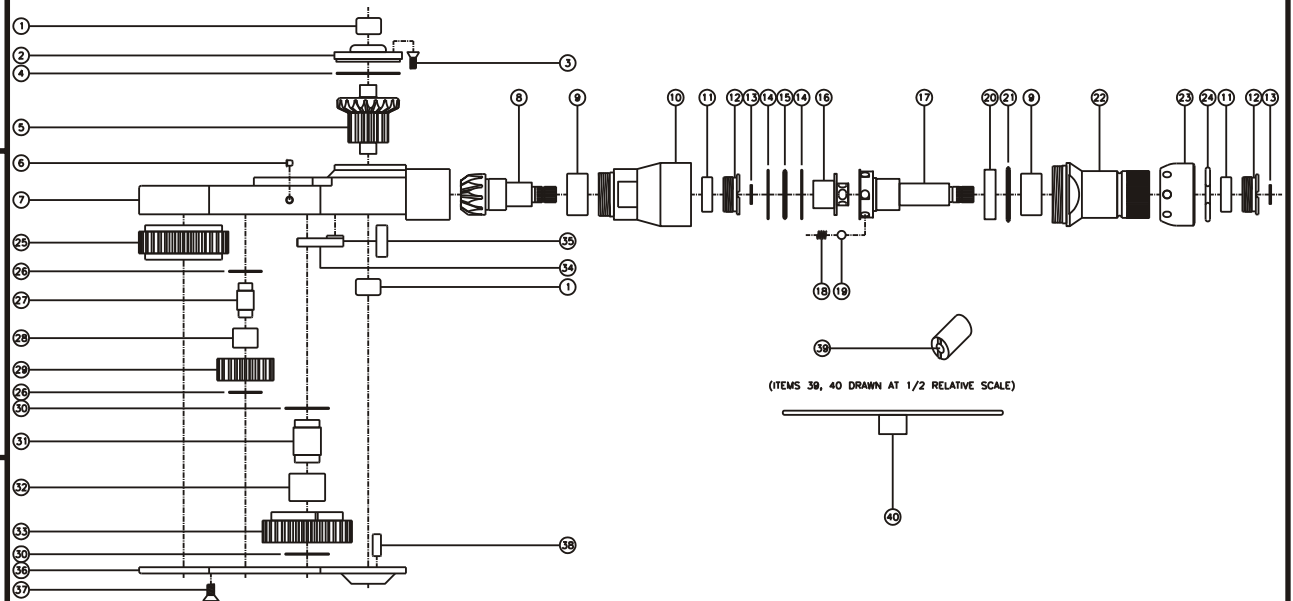
TOP VIEW



GEAR ASSEMBLY



PARTS BLOWOUT



ITEM	DESCRIPTION	PART NO.	ITEM	DESCRIPTION	PART NO.	ITEM	DESCRIPTION	PART NO.
1	Needle Bearing (2)	M-661	15	Thrust Bearing	NTA-1018i	29	Idler Gear (2)	161916i
2	Cap	BC-661G2	16	Drive Shaft	DSA10A-S	30	Thrust Race (2)	TRA-916i
3	Screw #1 (4)	S-806	17	Rotor	RA10A-10	31	Cam Pin	IP-101031i
4	Thrust Race	TRA-1423i	18	Spring (6)	CS-0608i	32	Needle Bearing	B-1010i
5	Bevel/Drive Gear Assembly	161350G2	19	Ball Bearing (6)	LB-10i	33	Cam Gear	163122i-C
6	Grease Fitting	1877	20	Retaining Ring	RR10i	34	Pawl	1406i-PS-P
7	Gear Housing	TN110H	21	Thrust Bearing	NTA-1220i	35	Pawl Spring	RSS-0823i
8	Bevel Pinion Gear	661P-ICH	22	Motor Coupling	MC-ICH-10	36	Bottom Cover	TN110P
9	Needle Bearing (2)	HK-1812i	23	Motor Nut	N-0841	37	Screw #2 (8)	S-1006
10	Clutch Housing	CTIH10A-H	24	Circlip	1021-C	38	Dowel Pin (2)	DP-1208
11	Ball Bearing (2)	699Zi	25	Socket Gear	163125i-1-XX	39	End Nut Socket (Optional)	ENT-10
12	End Nut (2)	EN-0976	26	Thrust Race (4)	TRA-512i	40	Motor Coupling Wrench (Optional)	CW-10
13	Snap Ring (2)	51111	27	Idler Pin (2)	IP-6725i			
14	Thrust Race (2)	TRA-1018i	28	Needle Bearing (2)	B-67i			