



D & D PRODUCTION INC.

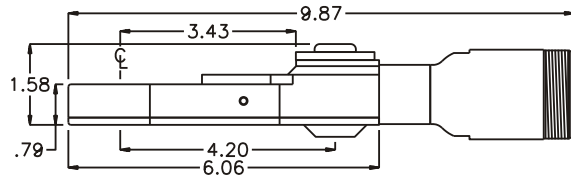
ASSEMBLY NO. TN110 HEAD NO. 230

TUBE NUT ASS'Y
Rev. A
11-09-00

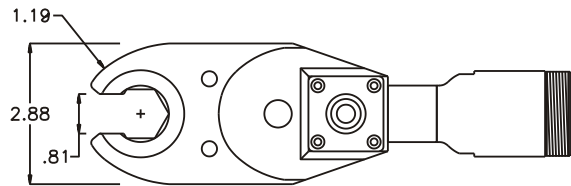
2500 WILLIAMS DRIVE • WATERFORD, MI • 48328

PHONE : (248) 334-2112 • FAX : (248) 334-0062

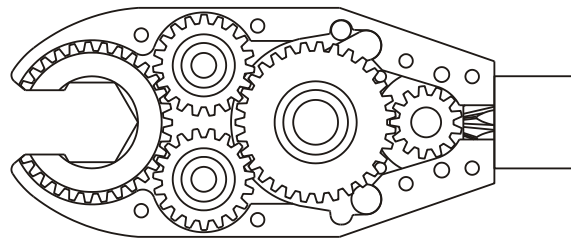
SIDE VIEW



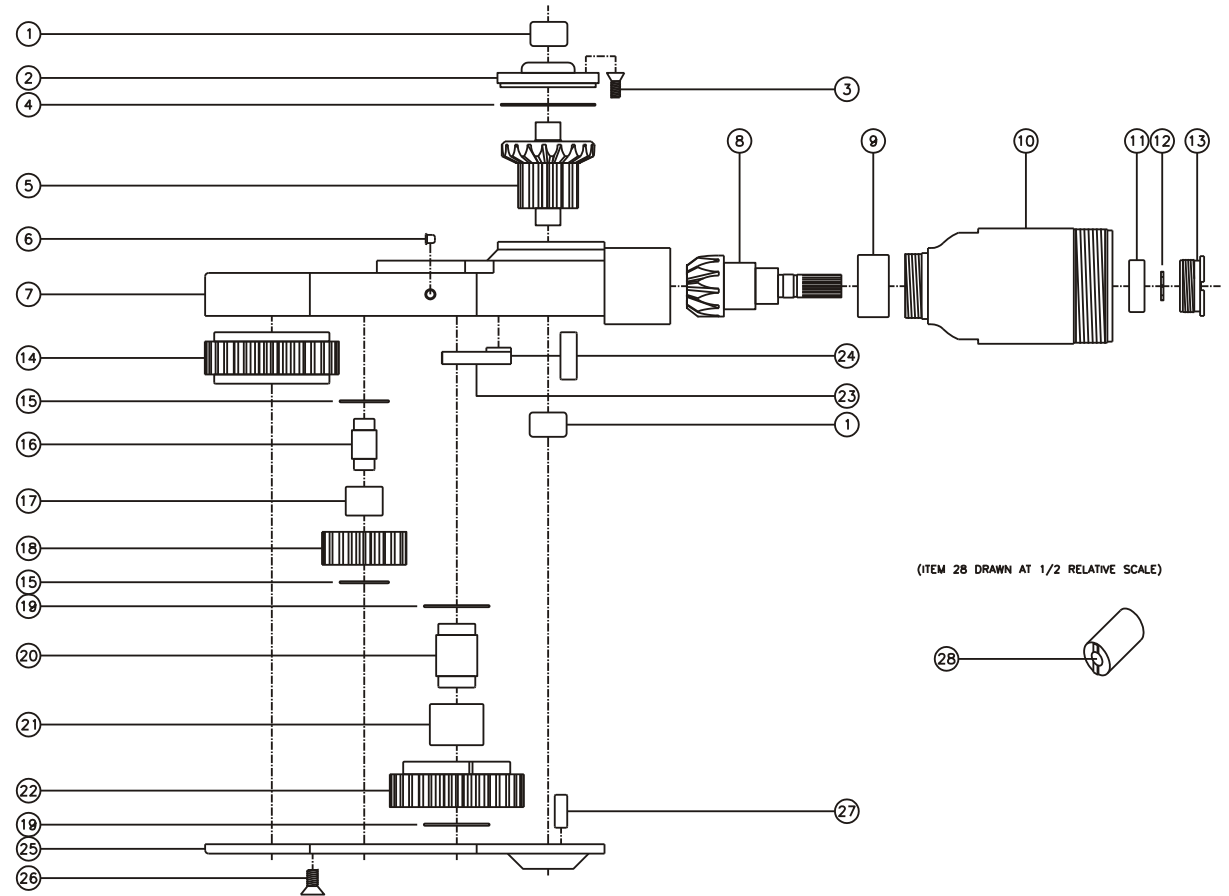
TOP VIEW



GEAR ASSEMBLY



PARTS BLOWOUT



(ITEM 28 DRAWN AT 1/2 RELATIVE SCALE)

ITEM	DESCRIPTION	PART NO.	ITEM	DESCRIPTION	PART NO.	ITEM	DESCRIPTION	PART NO.
1	Needle Bearing (2)	M-661	11	Ball Bearing	699Zi	21	Needle Bearing	B-1010i
2	Cap	BC-661G2	12	Snap Ring	51111	22	Cam Gear	163122i-C
3	Screw #1 (4)	S-806	13	End Nut	EN-0976	23	Pawl	1406i-PS-P
4	Thrust Race	TRA-1423i	14	Socket Gear	163125i-1-XX	24	Pawl Spring	RSS-0823i
5	Bevel/Drive Gear Assembly	161350G2	15	Thrust Race (4)	TRA-512i	25	Bottom Cover	TN110P
6	Grease Fitting	1877	16	Idler Pin (2)	IP-6725i	26	Screw #2 (8)	S-1006
7	Gear Housing	TN110H	17	Needle Bearing (2)	B-67i	27	Dowel Pin (2)	DP-1208
8	Bevel Pinion Gear	661P-66	18	Idler Gear (2)	161916i	28	End Nut Socket (Optional)	ENT-10
9	Needle Bearing	HK-1812i	19	Thrust Race (2)	TRA-916i			
10	Motor Coupling	MC-6645	20	Cam Pin	IP-101031i			