



D & D PRODUCTION INC.®

ASSEMBLY NO. PHA1-80-SS44

HEAD NO. 314

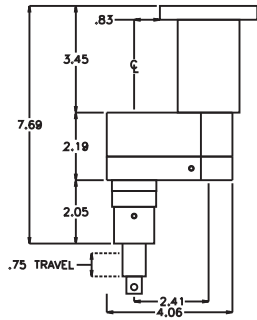
FOR AEM 3150 MOTOR

OFFSET ASS'Y
Rev. A
07-17-07

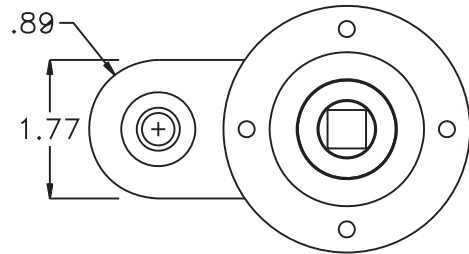
2500 WILLIAMS DRIVE • WATERFORD, MI • 48328

PHONE : (248) 334-2112 • FAX : (248) 334-0062

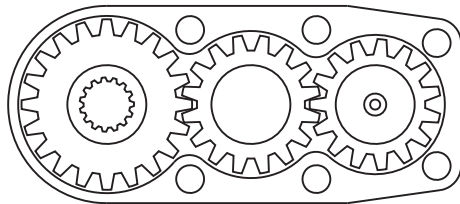
SIDE VIEW



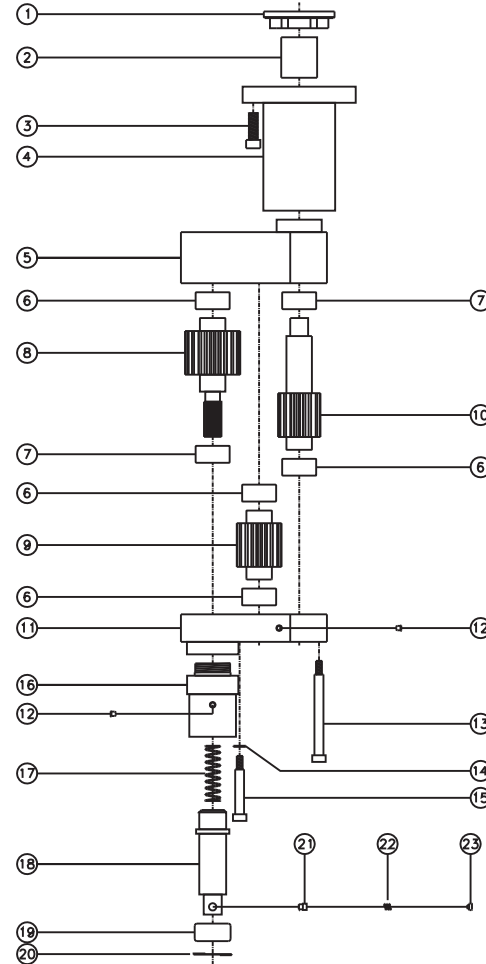
TOP VIEW



GEAR ASSEMBLY



PARTS BLOWOUT



ITEM	DESCRIPTION	PART NO.	ITEM	DESCRIPTION	PART NO.	ITEM	DESCRIPTION	PART NO.
1	Motor Nut	N-3150-4A	11	Gear Housing (Bottom)	PHA1-80-P	21	Pin	R-17
2	Drive Shaft	DS-123036B	12	Grease Fitting (2)	1877	22	Spring	#33
3	Screw (4)	S-M6x19SH	13	Shoulder Bolt #1 (4)	SB-436	23	Plug	R-16
4	Motor Adapter	HA-50110-AEM3150	14	Washer (2)	TRA-411MB			
5	Gear Housing (Top)	PHA1-80-H	15	Shoulder Bolt #2 (2)	SB-420			
6	Needle Bearing (4)	BK-1812	16	Spindle Housing	HS1-33			
7	Needle Bearing (2)	HK-1812	17	Spring	C-051F-08			
8	Output Gear	1420106-S	18	1/2" Square Driver	DS-S2494			
9	Idler Gear	141662	19	Needle Bearing	B-128			
10	Input Gear	1415117-12MSD	20	Retaining Ring	RR-100			