

D & D PRODUCTION INC.®

ASSEMBLY NO. PH1-50A-SS44-38 HEAD NO. 321

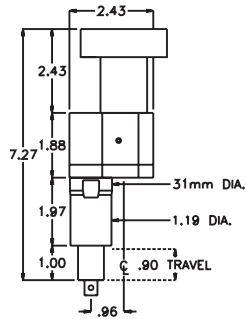
OFFSET ASS'Y
Rev. A
02-13-07

FOR ACRADYNE SERIES 2000 MOTOR

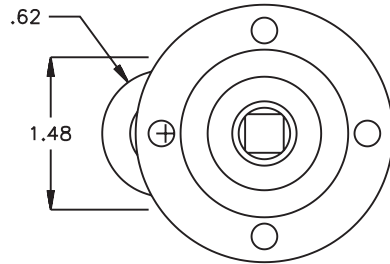
2500 WILLIAMS DRIVE • WATERFORD, MI • 48328

PHONE : (248) 334-2112 • FAX : (248) 334-0062

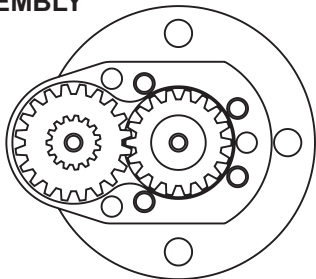
SIDE VIEW



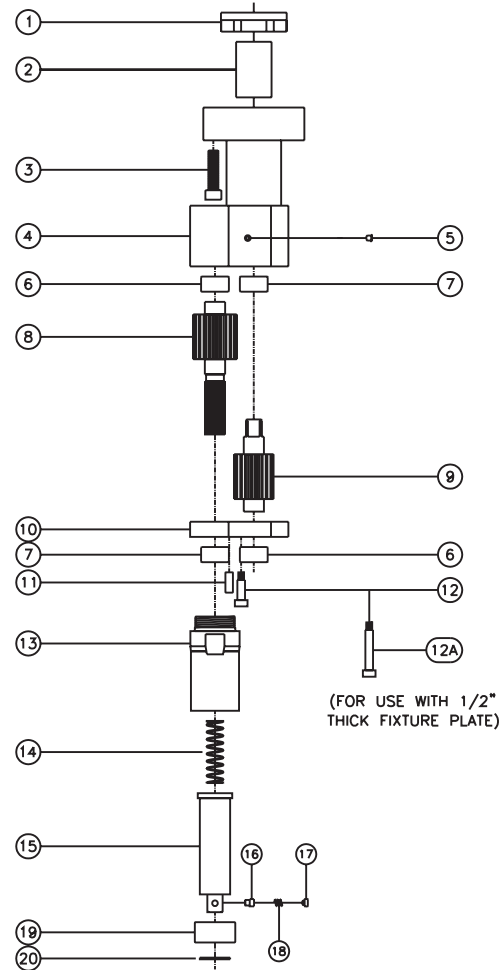
TOP VIEW



GEAR ASSEMBLY



PARTS BLOWOUT



ITEM	DESCRIPTION	PART NO.	ITEM	DESCRIPTION	PART NO.	ITEM	DESCRIPTION	PART NO.
1	Motor Nut	N-2650-4B	11	Dowel Pin (3)	DP-1208	20	Retaining Ring	RR-100
2	Drive Shaft	DS-062844	12	Shoulder Bolt (4)	SB-308			
3	Screw (4)	S-M6X30SH	12A	Fixture Shoulder Bolt (4)	SB-316			
4	Gear Housing	PH1-50A-H2	13	Spindle Housing	HS2-32			
5	Grease Fitting (2)	1877	14	Spring	C-051F-10			
6	Needle Bearing (2)	BCE-86	15	Drive Spindle	DS-3880			
7	Needle Bearing (2)	B-86	16	Pin	R-15			
8	Output Gear	2020105-S	17	Plug	R-14			
9	Input Gear	201873-38MSD	18	Spring	#32			
10	Bottom Plate	PH1-50A-P	19	Needle Bearing	B-128			