



D & D PRODUCTION INC.®

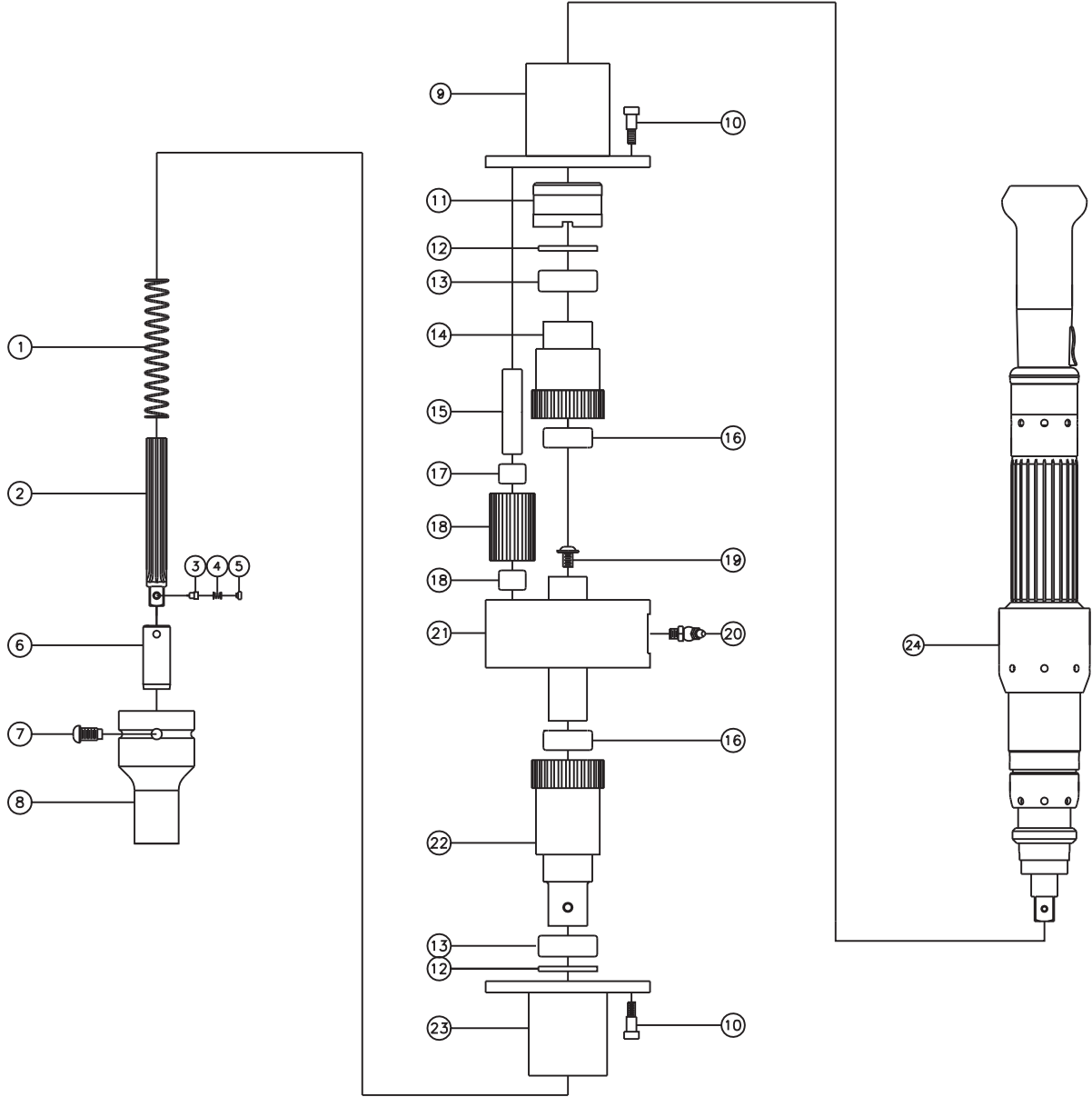
# ASSEMBLY NO. HD140 HEAD NO. 1905A

HOLD & DRIVE ASS'Y  
Rev.A  
11-06-06

2500 WILLIAMS DRIVE • WATERFORD, MI • 48328

PHONE : (248) 334-2112 • FAX : (248) 334-0062

## PARTS BLOWOUT



ITEM	DESCRIPTION	PART NO.	ITEM	DESCRIPTION	PART NO.
1	Spring #1	LC-045H-14	16	Needle Bearing #2 (2)	B-168
2	Hold Spindle	HS-16137-38MSD	17	Needle Bearing #3 (6)	B-88
3	Pin	R15	18	Idler Gear (3)	161755
4	Spring #2	#32	19	Screw #2	S-1406FLB
5	Plug	R14	20	Grease Fitting	L5030
6	Hold Socket	HDS-1152-56SD-38	21	Body	HD-140-B
7	Screw #1 (2)	S-509-P	22	Output Gear	1628136-100MSD
8	Drive Socket	HDS-32108-76FL-100SDM	23	Bottom Cover	HD140-P
9	Motor Coupling	MC-HD140-ETDS770	24	Motor	ETD S7-120-13CTADST
10	Shoulder Bolt (6)	SB-406	25	Lock Nut Socket, Optional	ENT-HD-140-D13
11	Lock Nut	LN-HD140-ETDS770			
12	Oil Seal (2)	OS-12330			
13	Needle Bearing #1 (2)	B-208			
14	Input Gear	162879-12SD			
15	Idler Pin (3)	IP-88D78			



D & D PRODUCTION INC.®

# HD140 HOLD & DRIVE ASSEMBLY

Specifications, Operation, Maintenance, Assembly, & Warranty

HOLD & DRIVE ASS'Y  
Rev. A  
11-06-06

2500 WILLIAMS DRIVE

• WATERFORD, MI

• 48328

PHONE : (248) 334-2112

• FAX : (248) 334-0062

## SPECIFICATIONS

**Output: 1" Male Square**  
**Max. Torque : 260 Nm (191 ft-lbs)**  
**Gear Ratio : 1:1**  
**Efficiency : 75%**

## OPERATION

Refer to the American Standards Institute Safety Code for Portable Air Tools (ANSI B186.1).

## AVOIDING INJURY

Disconnect power supply from motor when performing maintenance procedures.  
Keep fingers, hair, jewelry, clothing or any foreign object away from operating equipment.  
Wear safety glasses when using power tools.  
Obey locally legislated safety rules with regard to installation, operation and maintenance.

## MAINTENANCE

Routinely inspect assembly components. At the time of inspection, replace inexpensive bearings, worn or damaged gearing and clean and relubricate assembly components. Lubricate periodically (20,000 torque cycles, adjust as necessary) with approximately 1 oz. of grease. Recommended: Lubriplate GR-132 or an equivalent medium weight gear grease.

## DISASSEMBLY

**Removing Assembly from Motor (Tools Required: 1/8" hex key wrench, punch, hammer, 1/2" square ratchet wrench, ENT-HD140-D13 Lock Nut Socket)**

Unscrew 3 shoulder bolts from motor coupling. Punch idler pins downward (away from motor). Motor coupling will separate from body. Care should be taken that hold and drive components do not fall upon separation. Use wrench with lock nut socket to unscrew lock nut (left-hand thread). Motor coupling may be removed from motor by tapping lightly around the perimeter.

**Removing Hold Spindle from Body (Tools Required: 5/32" hex key wrench)**

Remove assembly from motor (see above). Push upward against hold spindle/hold socket until top of hold spindle is visible. Unscrew the screw on the end of the spindle. Spindle may be removed.

## ASSEMBLY

Reverse procedure for disassembly and refer to the Component Installation Torque Chart below.

## COMPONENT INSTALLATION TORQUE CHART

Part No.	Description	Thread	Assembly Torque
SB-406	Shoulder Bolt	Right-hand	6 Nm (4 ft-lbs)
S-509-P	Screw	Right-hand	6Nm (4 ft-lbs)
S-1406FLB	Screw	Right-hand	12Nm (9 ft-lbs)
LN-HD140-D13	Lock Nut	Left-hand	70Nm (52 ft-lbs)

## WARRANTY

D&D Production Inc. warrants products and parts of its own manufacture against defects of material and workmanship, under use and service in accordance with instructions herein described, for a period of one year from date of shipment. The warranty is limited to repair or replacement of defective parts. Product is to be returned freight prepaid to D&D for inspection. Customer abuse or modification of any D&D Production Inc. product, without written consent from D&D Production Inc. officers, will void this warranty. D&D Production Inc. makes no warranty, expressed or implied, other than the warranty herein described, and has not authorized any person to make a different representation of warranty.

For additional information contact D&D Production Inc., 2500 Williams Drive, Waterford, MI, USA 48328

Phone: +1 248-334-2112 • Fax: +1 248-334-0062 • E-mail: ddprod@journey.com

DOC. 1904B - 05/07