



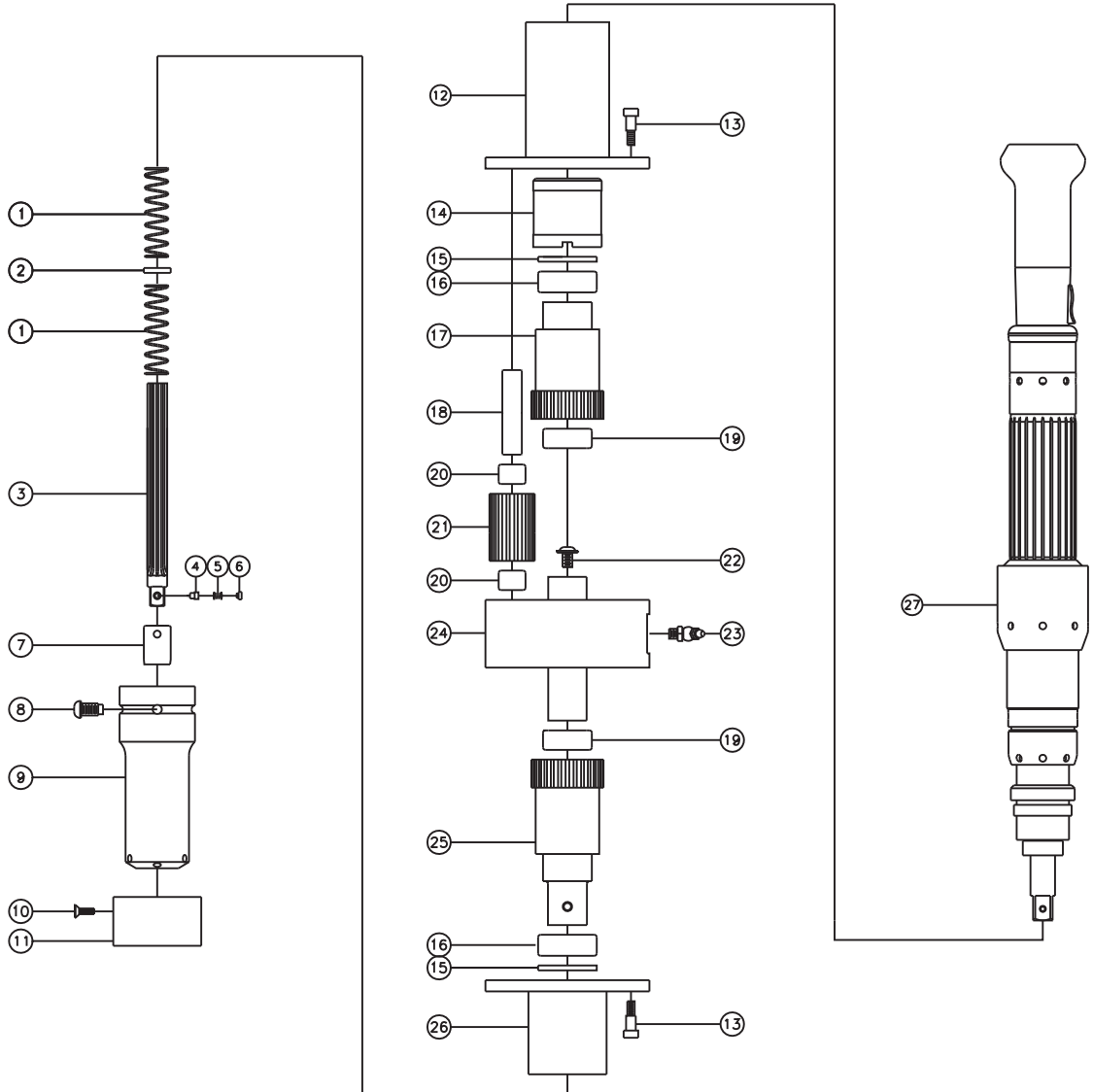
ASSEMBLY NO. HD140 HEAD NO. 1904A

HOLD & DRIVE ASS'Y
Rev. B
05-01-07

2500 WILLIAMS DRIVE • WATERFORD, MI • 48328

PHONE : (248) 334-2112 • FAX : (248) 334-0062

PARTS BLOWOUT



ITEM	DESCRIPTION	PART NO.	ITEM	DESCRIPTION	PART NO.
1	Spring #1 (2)	LC-063HJ-09	16	Needle Bearing #1 (2)	B-208
2	Washer	TRC-815B	17	Input Gear	162896-12SD
3	Hold Spindle	HS-16182-38MSD	18	Idler Pin (3)	IP-88D78
4	Pin	R15	19	Needle Bearing #2 (2)	B-168
5	Spring #2	#32	20	Needle Bearing #3 (6)	B-88
6	Plug	R14	21	Idler Gear (3)	161755
7	Hold Socket	HDS-1132-52FL-38	22	Screw #3	S-1406FLB
8	Screw #1 (2)	S-509-P	23	Grease Fitting	L5030
9	Drive Socket	HDS-31149-70-100SD-M	24	Body	HD-140-B
10	Screw #2 (2)	S-808	25	Output Gear	1628136-100MSD
11	Sleeve	SL-10480	26	Bottom Cover	HD140-P
12	Motor Coupling	MC-HD-140	27	Motor	ETD S7-140-13CTADST
13	Shoulder Bolt (6)	SB-406	28	Lock Nut Socket, Optional	ENT-HD-140-D13
14	Lock Nut	LN-HD140-D13			
15	Oil Seal (2)	OS-12330			



SPECIFICATIONS

Output: 1" Male Square
Max. Torque : 260 Nm (191 ft·lbs)
Gear Ratio : 1:1
Efficiency : 75%

OPERATION

Refer to the American Standards Institute Safety Code for Portable Air Tools (ANSI B186.1).

AVOIDING INJURY

Disconnect power supply from motor when performing maintenance procedures.
Keep fingers, hair, jewelry, clothing or any foreign object away from operating equipment.
Wear safety glasses when using power tools.
Obey locally legislated safety rules with regard to installation, operation and maintenance.

MAINTENANCE

Routinely inspect assembly components. At the time of inspection, replace inexpensive bearings, worn or damaged gearing and clean and relubricate assembly components. Lubricate periodically (20,000 torque cycles, adjust as necessary) with approximately 1 oz. of grease. Recommended: Lubriplate GR-132 or an equivalent medium weight gear grease.

DISASSEMBLY

Removing Assembly from Motor (Tools Required: 1/8" hex key wrench, punch, hammer, 1/2" square ratchet wrench, ENT-HD140-D13 Lock Nut Socket)

Unscrew 3 shoulder bolts from motor coupling. Punch idler pins downward (away from motor). Motor coupling will separate from body. Care should be taken that hold and drive components do not fall upon separation. Use wrench with lock nut socket to unscrew lock nut (left-hand thread). Motor coupling may be removed from motor by tapping lightly around the perimeter.

Removing Hold Spindle from Body (Tools Required: 5/32" hex key wrench)

Remove assembly from motor (see above). Push upward against hold spindle/hold socket until top of hold spindle is visible. Unscrew the screw on the end of the spindle. Spindle may be removed.

ASSEMBLY

Reverse procedure for disassembly and refer to the Component Installation Torque Chart below.

COMPONENT INSTALLATION TORQUE CHART

Part No.	Description	Thread	Assembly Torque
SB-406	Shoulder Bolt	Right-hand	6 Nm (4 ft·lbs)
S-509-P	Screw	Right-hand	6Nm (4 ft·lbs)
S-1406FLB	Screw	Right-hand	12Nm (9 ft·lbs)
LN-HD140-D13	Lock Nut	Left-hand	70Nm (52 ft·lbs)

WARRANTY

D&D Production Inc. warrants products and parts of its own manufacture against defects of material and workmanship, under use and service in accordance with instructions herein described, for a period of one year from date of shipment. The warranty is limited to repair or replacement of defective parts. Product is to be returned freight prepaid to D&D for inspection. Customer abuse or modification of any D&D Production Inc. product, without written consent from D&D Production Inc. officers, will void this warranty. D&D Production Inc. makes no warranty, expressed or implied, other than the warranty herein described, and has not authorized any person to make a different representation of warranty.

For additional information contact D&D Production Inc., 2500 Williams Drive, Waterford, MI, USA 48328
Phone: +1 248-334-2112 • Fax: +1 248-334-0062 • E-mail: ddprod@journey.com