



D & D PRODUCTION INC.®

CTA-10A-25S06 CLUTCH ASSEMBLY

FOR USE WITH TUBE NUT ATTACHMENTS

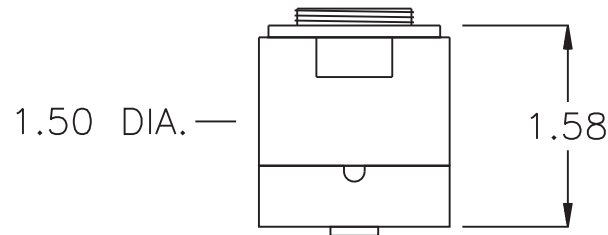
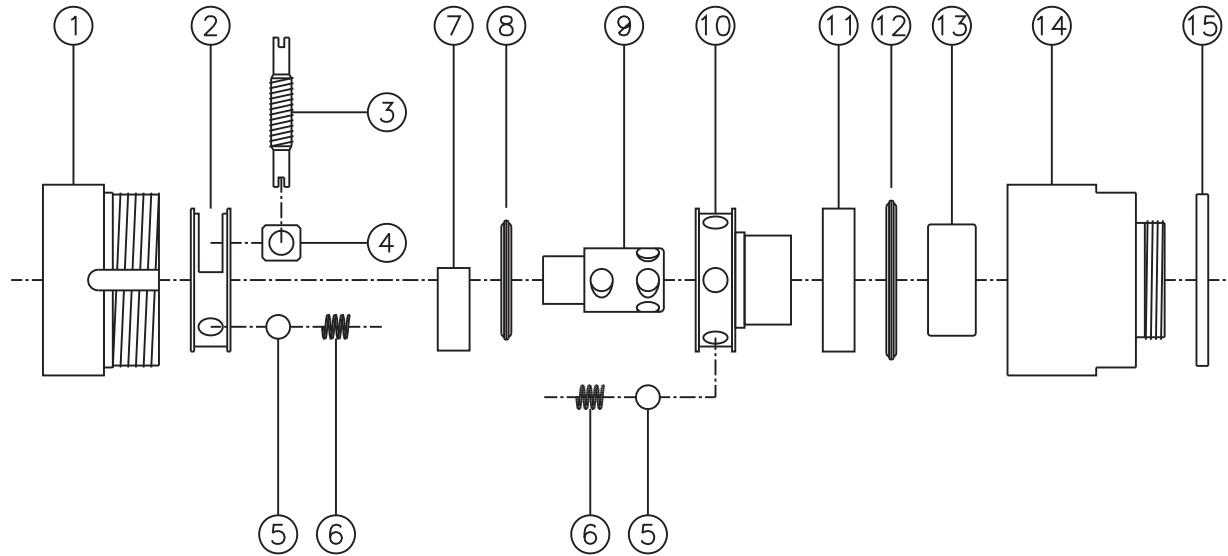
CLUTCH ASS'Y
Rev. A
12-16-09

2500 WILLIAMS DRIVE • WATERFORD, MI • 48328

PHONE : (248) 334-2112 •

FAX : (248) 334-0062

CLOCKWISE MOTOR ROTATION



ITEM	DESCRIPTION	PART NO.	ITEM	DESCRIPTION	PART NO.	ITEM	DESCRIPTION	PART NO.
1	Lower Clutch Housing	CTA10-2415	11	Retaining Ring	RR10			
2	Stator	SPA10	12	Thrust Bearing	NTA-1220			
3	Adjustment Screw	A10	13	Needle Bearing	B-116			
4	Adjustment Pin	P10	14	Upper Clutch Housing	CTA10-25S06			
5	Ball Bearing (7)	LB-10	15	Spacer	S4-TS			
6	Spring (7)	LC-022B-01						
7	Retaining Ring	RS10						
8	Thrust Bearing	NTA-815						
9	Drive Shaft	DSB10A-38						
10	Rotor	RA10A						