



D & D PRODUCTION INC.®

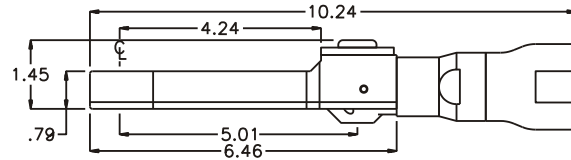
ASSEMBLY NO. CFTD72 HEAD NO. 113 FOR BOSCH EXACT 10 MOTOR

CROWFOOT ASS'Y
Rev. A
01-28-03

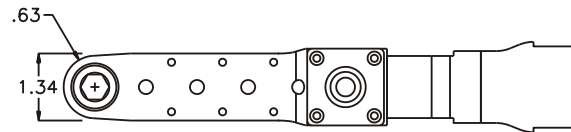
2500 WILLIAMS DRIVE • WATERFORD, MI • 48328

PHONE : (248) 334-2112 • FAX : (248) 334-0062

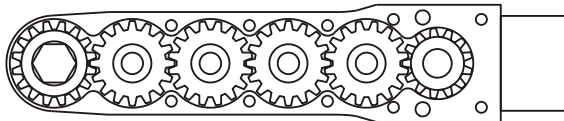
SIDE VIEW



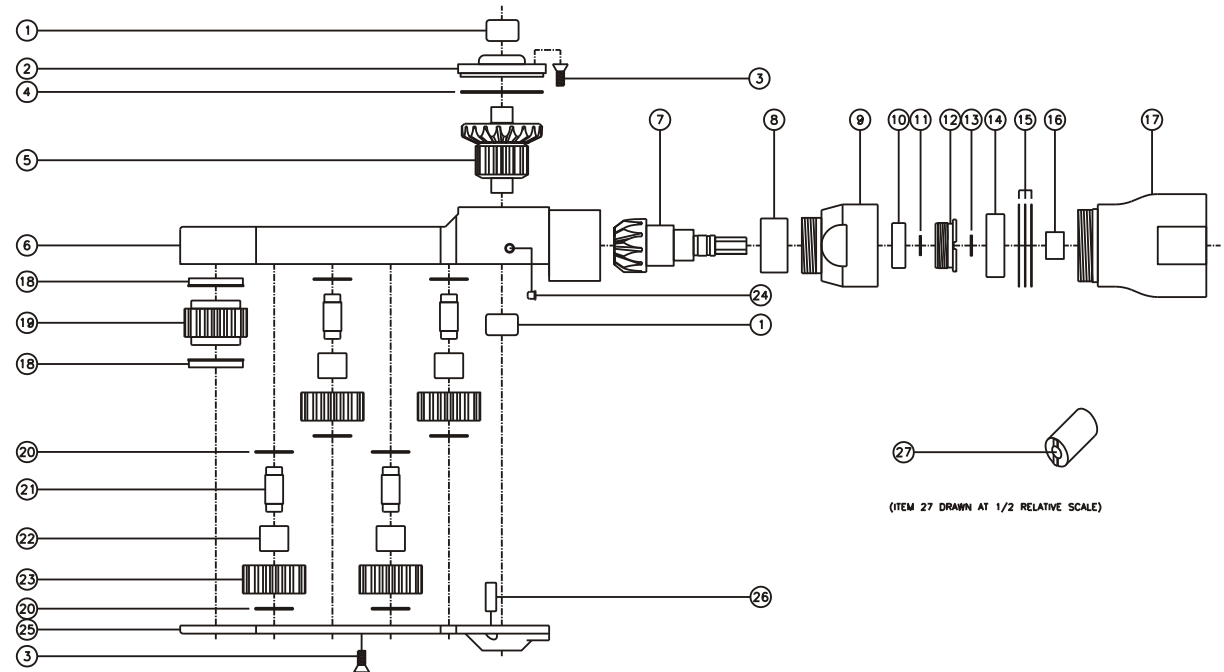
TOP VIEW



GEAR ASSEMBLY



PARTS BLOWOUT



(ITEM 27 DRAWN AT 1/2 RELATIVE SCALE)

ITEM	DESCRIPTION	PART NO.	ITEM	DESCRIPTION	PART NO.	ITEM	DESCRIPTION	PART NO.
1	Needle Bearing (2)	M-661	11	Snap Ring	51111	21	Idler Pin (4)	IP-5725B
2	Cap	BC-661G2	12	End Nut	EN-0976	22	Needle Bearing (4)	B-57i
3	Screw (14)	S-806	13	Snap Ring	SH-39	23	Idler Gear (4)	161616S2
4	Thrust Race	TRA-1423i	14	Ball Bearing	6001	24	Grease Fitting	1877
5	Bevel/Drive Gear Assembly	161348G2	15	Shim Set	W-BE10-S	25	Bottom Fitting	CFTD72P
6	Gear Housing	CFTD72H	16	Bushing	A-3020	26	Dowel Pin (2)	DP-1208
7	Bevel Pinion Gear	661P-M3	17	Motor Coupling	MC-E10	27	End Nut Socket (Optional)	ENT-10
8	Needle Bearing	HK-1812i	18	Bushing (2)	A-5509			
9	Adapter	IA-E10	19	Socket Gear	161625S-XX			
10	Ball Bearing	699Zi	20	Thrust Race (8)	TRA-512M1			