

D & D PRODUCTION INC.®

ASSEMBLY NO. CFTD72

HEAD NO. 112

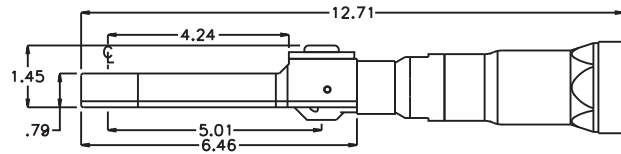
FOR ECS 70 MOTOR

CROWFOOT ASS'Y
Rev. A
01-10-07

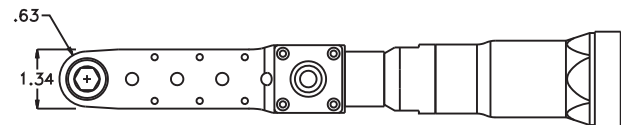
2500 WILLIAMS DRIVE • WATERFORD, MI • 48328

PHONE : (248) 334-2112 • FAX : (248) 334-0062

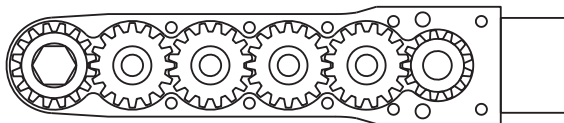
SIDE VIEW



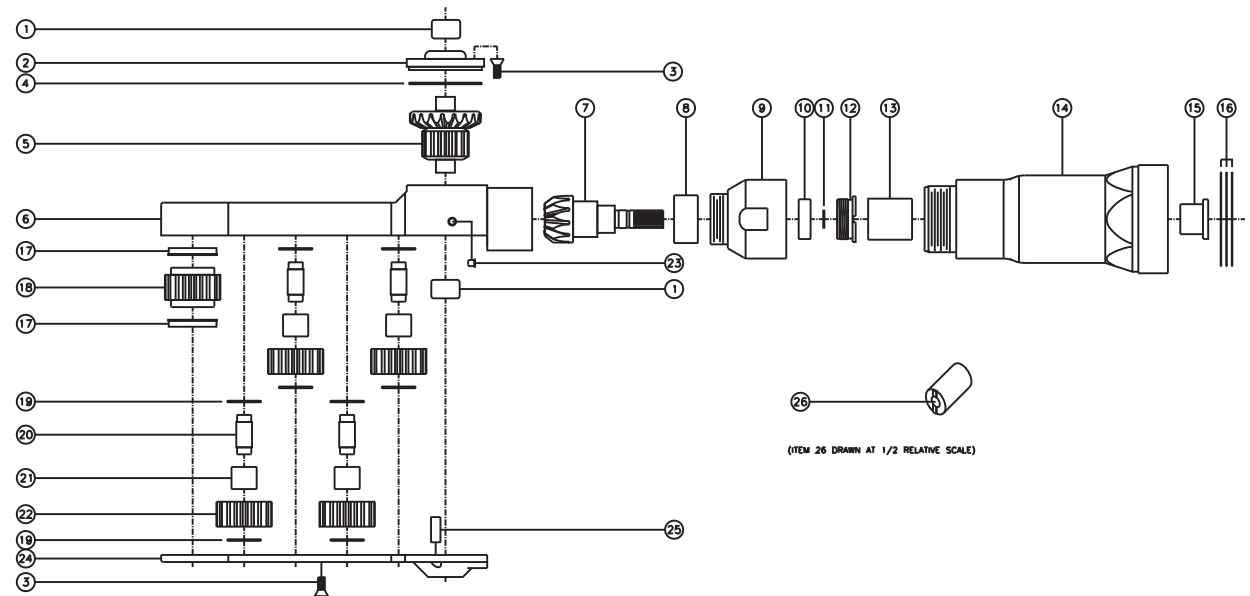
TOP VIEW



GEAR ASSEMBLY



PARTS BLOWOUT



ITEM	DESCRIPTION	PART NO.	ITEM	DESCRIPTION	PART NO.	ITEM	DESCRIPTION	PART NO.
1	Needle Bearing (2)	M-661	11	Snap Ring	51111	21	Needle Bearing (4)	B-57i
2	Cap	BC-661G2	12	End Nut	EN-0976	22	Idler Gear (4)	161616S2
3	Screw (14)	S-806	13	Drive Shaft	DS-S062628	23	Grease Fitting	1877
4	Thrust Race	TRA-1423i	14	Motor Coupling	MC-ECS-70B	24	Bottom Plate	CFTD72P
5	Bevel/Drive Gear Assembly	161348G2	15	Bushing	Customer Supplied	25	Dowel Pin (2)	DP-1206
6	Gear Housing	CFTD72H	16	Shim Set	W-ECS70	26	End Nut Socket (Optional)	ENT-10
7	Bevel Pinion Gear	661P-66	17	Bushing (2)	A-5509			
8	Needle Bearing	HK-1812i	18	Socket Gear	161625S-XX			
9	Attachment Coupling	MC-ECS-70A	19	Thrust Race (8)	TRA-512M1			
10	Ball Bearing	699Zi	20	Idler Pin (4)	IP-5725B			