

D & D PRODUCTION INC.®

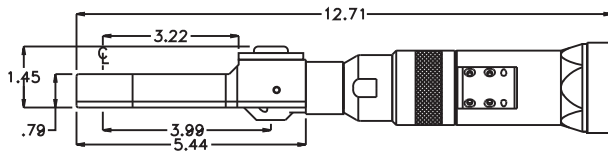
ASSEMBLY NO. CFTC72 HEAD NO. 125

CROWFOOT ASS'Y
Rev. A
08-14-07

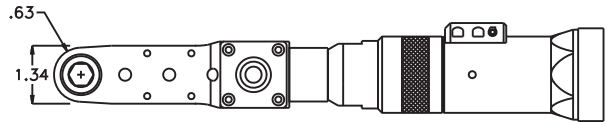
2500 WILLIAMS DRIVE • WATERFORD, MI • 48328

PHONE : (248) 334-2112 • FAX : (248) 334-0062

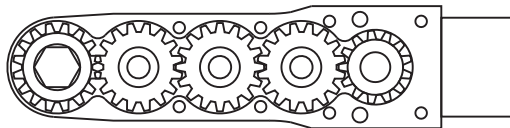
SIDE VIEW



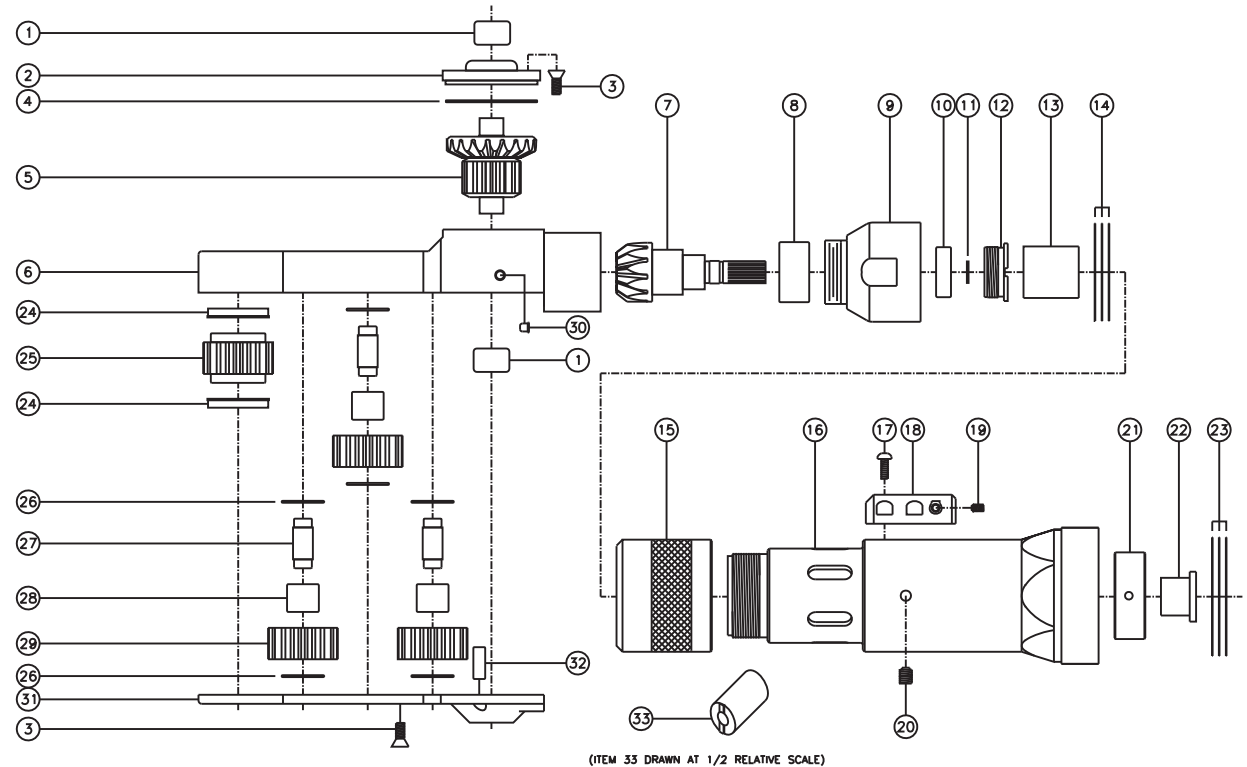
TOP VIEW



GEAR ASSEMBLY



PARTS BLOWOUT



(ITEM 33 DRAWN AT 1/2 RELATIVE SCALE)

ITEM	DESCRIPTION	PART NO.	ITEM	DESCRIPTION	PART NO.	ITEM	DESCRIPTION	PART NO.
1	Needle Bearing (2)	M-661	15	Light Ring	LR-11435	29	Idler Gear (3)	161616S2
2	Cap	BC-661G2	16	Motor Coupling	MC-11433	30	Grease Fitting	1877
3	Screw #1 (12)	S-806	17	Screw #2 (4)	S-405B	31	Bottom Plate	CFTC72P
4	Thrust Race	TRA-1423i	18	Cable Clamp	CC-11486	32	Dowel Pin (2)	DP-1208
5	Bevel/Drive Gear Assembly	161348G2	19	Set Screw #1 (2)	SS-404	33	End Nut Socket (Optional)	ENT-10
6	Gear Housing	CFTC72H	20	Set Screw #2 (2)	SS-1004PP			
7	Bevel Pinion Gear	661P-66	21	Sleeve	SL-11434			
8	Needle Bearing	HK-1812i	22	Bushing	Customer Supplied			
9	Attachment Coupling	MC-ECS-70A	23	Shim Set	W-ECS70			
10	Ball Bearing	699Zi	24	Bushing (2)	A-5509			
11	Snap Ring	51111	25	Socket Gear	161625S-XX			
12	End Nut	EN-0976	26	Thrust Race (6)	TRA-512M1			
13	Drive Shaft	DS-S062628	27	Idler Pin (3)	IP-5725B			
14	Orientation Shim Set	W-ECS70-2	28	Needle Bearing (3)	B-57i			