



D & D PRODUCTION INC.®

ASSEMBLY NO. CFTC72

HEAD NO. 124

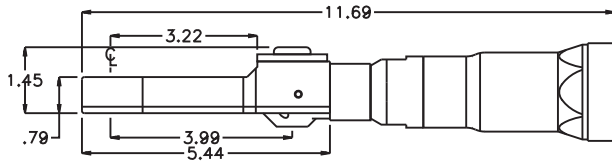
FOR ECS 70 MOTOR

CROWFOOT ASS'Y
Rev. A
08-14-07

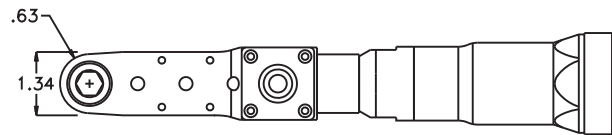
2500 WILLIAMS DRIVE • WATERFORD, MI • 48328

PHONE : (248) 334-2112 • FAX : (248) 334-0062

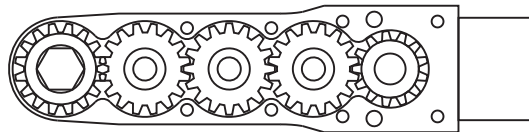
SIDE VIEW



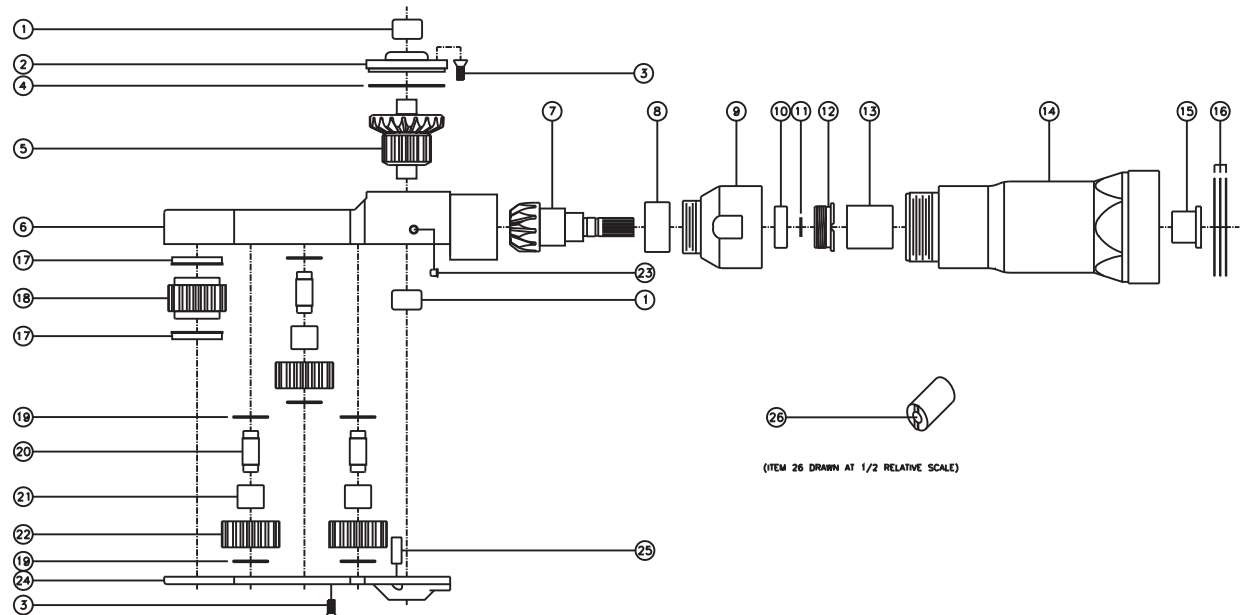
TOP VIEW



GEAR ASSEMBLY



PARTS BLOWOUT



| ITEM | DESCRIPTION | PART NO. | ITEM | DESCRIPTION | PART NO. | ITEM | DESCRIPTION | PART NO. |
|------|---------------------------|------------|------|-----------------|-------------------|------|---------------------------|----------|
| 1 | Needle Bearing (2) | M-661 | 11 | Snap Ring | 51111 | 21 | Needle Bearing (3) | B-57i |
| 2 | Cap | BC-661G2 | 12 | End Nut | EN-0976 | 22 | Idler Gear (3) | 161616S2 |
| 3 | Screw (12) | S-806 | 13 | Drive Shaft | DS-S062628 | 23 | Grease Fitting | 1877 |
| 4 | Thrust Race | TRA-1423i | 14 | Motor Coupling | MC-ECS-70B | 24 | Bottom Plate | CFTC72P |
| 5 | Bevel/Drive Gear Assembly | 161348G2 | 15 | Bushing | Customer Supplied | 25 | Dowel Pin (2) | DP-1206 |
| 6 | Gear Housing | CFTC72H | 16 | Shim Set | W-ECS70 | 26 | End Nut Socket (Optional) | ENT-10 |
| 7 | Bevel Pinion Gear | 661P-66 | 17 | Bushing (2) | A-5509 | | | |
| 8 | Needle Bearing | HK-1812i | 18 | Socket Gear | 161625S-XX | | | |
| 9 | Attachment Coupling | MC-ECS-70A | 19 | Thrust Race (6) | TRA-512M1 | | | |
| 10 | Ball Bearing | 699Zi | 20 | Idler Pin (3) | IP-5725B | | | |