



D & D PRODUCTION INC.®

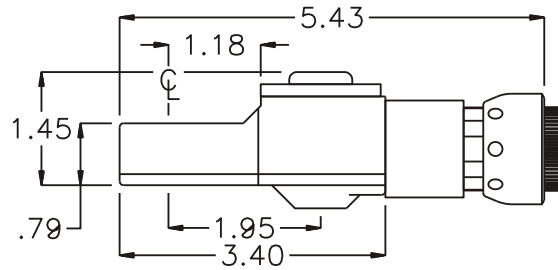
ASSEMBLY NO. CFT72 HEAD NO. 122

CROWFOOT ASS'Y
Rev. A
01-29-03

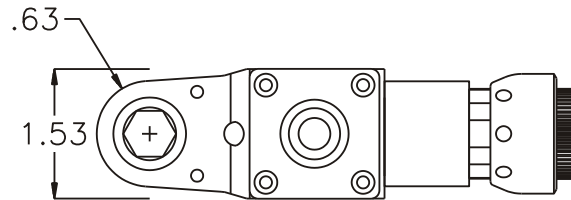
2500 WILLIAMS DRIVE • WATERFORD, MI • 48328

PHONE : (248) 334-2112 • FAX : (248) 334-0062

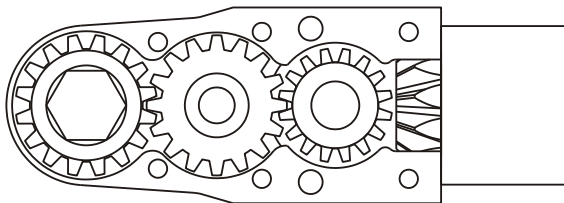
SIDE VIEW



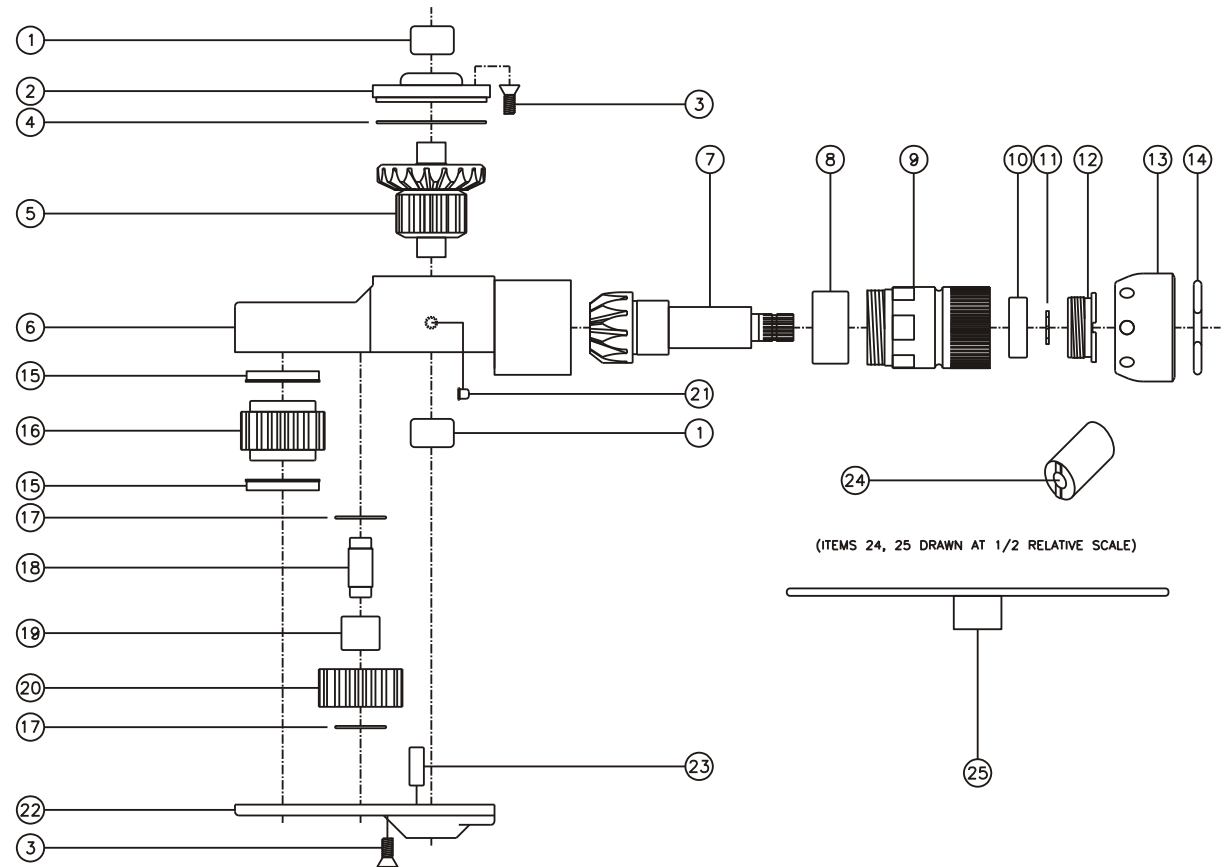
TOP VIEW



GEAR ASSEMBLY



PARTS BLOWOUT



(ITEMS 24, 25 DRAWN AT 1/2 RELATIVE SCALE)

ITEM	DESCRIPTION	PART NO.	ITEM	DESCRIPTION	PART NO.	ITEM	DESCRIPTION	PART NO.
1	Needle Bearing (2)	M-661	11	Snap Ring	51111	21	Grease Fitting	1877
2	Cap	BC-661G2	12	End Nut	EN-0976	22	Bottom Plate	CFT72P
3	Screw (10)	S-806	13	Motor Nut	N-0841	23	Dowel Pin (2)	DP-1208
4	Thrust Race	TRA-1423i	14	Circlip	1021-C	24	End Nut Socket (Optional)	ENT-10
5	Bevel/Drive Gear Assembly	161348G2	15	Bushing (2)	A-5509	25	Motor Coupling Wrench (Optional)	CW-10
6	Gear Housing	CFT72H	16	Socket Gear	161625S-XX			
7	Bevel Pinion Gear	661P-10	17	Thrust Race (2)	TRA-512M1			
8	Needle Bearing	HK-1812i	18	Idler Pin	IP-5725B			
9	Motor Coupling	MC-10	19	Needle Bearing	B-57i			
10	Ball Bearing	699Zi	20	Idler Gear	161616S2			